



PCBN数控刀片
【 淬火钢加工 】

北京沃尔德金刚石工具股份有限公司
BEIJING WORLDIA DIAMOND TOOLS CO.,LTD.

目录索引 Index

沃尔德材料介绍	A01-A02
PCBN Material Introduction	
编号规则	B01-B02
Rule Of Insert Code	
贯穿型迷你刀片	C01-C04
Mini Solid Tipped PCBN Inserts	
重切削型刀片	D01-D04
Heavy Cutting PCBN Inserts	
常规型迷你刀片	E01-E17
Mini Tipped PCBN Inserts	
修光刃型刀片	F01-F04
Wiper PCBN Inserts	
断屑型刀片	G01-G03
Chip Breaker PCBN Inserts	
可修磨型刀片	H01-H17
PCBN Standard Inserts	
正确走刀路径推荐	I01
Recommendation for cutting direction	
选择正确的切削参数	I02
Proper cutting parameter	
刀片磨损及解决方案	I03
Troubleshooting recommendations	
刀尖圆弧、进给与粗糙度关系	I04
Nose radius, feed rate against surface finish	
机床转速转换表	I05
Recommendation for appropriate spindle speed	
配合公差等级表-IT等级表	I06
IT standard tolerance	
轴、孔配合公差表	I07
Spindle and hole standard tolerance	
硬度对照表	I08
Hardness Conversion Charts	

沃尔德切削材料介绍

PCBN Material Introduction

■ 工件材料分类 IS0513标准

Material Group (IS0513 Standard)

P	非合金钢 (如AISI1040), 低合金钢 (ISI4340), 高合金钢 (如AISI D3), 铸钢和长屑可锻铸铁 P: Steel
M	铁素体和马氏体不锈钢和奥氏体不锈钢和锰钢, 合金铸铁 M: Stainless Steel
K	可锻铸铁, 冷硬铸铁, 灰口铸铁和球墨铸铁 K: Cast Iron
N	非铁金属, 铝合金 N: Non-Ferrous Materials
S	高温合金, 钛合金 S: High-Temp Alloys
H	淬硬材料, 淬硬钢和铸铁 H: Hardened Materials

■ 刀片材料编码说明

Material Code Key

PN	H10	20
PCBN	使用分类代号 Application	材料代号 Material code

材料种类 Material	使用分类代号 Application	材料代号 Material code	特性 Characteristics	
PN	H01	20	速度 Speed	耐磨性 Abrasive resistance
	H10		↕	韧性 Tenacity
	H20			
	H30		断续 Interruption	

■ PCBN种类 (专为加工H系列淬硬钢所开发)

Hard Steel Machining - Special PCBN Introduction.

工件材质 Workpiece Material	PCBN牌号 WORLDIA PCBN Grades	CBN含量.% Content	粒度.μm PCBN Grade	结合剂 Bond	硬度 (Hv) Hardness	特性 Characteristics	应用 Applications
H	PNH0120	45~50	1	TiC	2600~2800	优秀的耐热性和耐黏结磨性 Good thermal stability and crater wear resistance	高度连续加工淬硬钢 ● Used for high-speed continuous turning of hardened steel
	PNH1020	60~65	1~2	TiCN	2600~2800	耐磨性与抗冲击性的组合 Combination of wear resistance and thermal stability	轻断续、重载加工淬硬钢 ●● Used for moderately interrupted and continuous turning of hardened steel
	PNH2018	65~70	1<	TiN	2700~2900	耐磨性与抗冲击性的组合 Combination of wear resistance and thermal stability	连续或断续加工淬硬钢 ●● Used for continuous or interrupt turning of hardened steel
	PNH3019	85~95	1	AlN	3700~3900	优秀的韧性 High degree of toughness due to fine CBN and ceramic binder matrix	重断续、重载加工淬硬钢 ●● Used for heavy interrupt turning of hardened steel

■ 推荐切削条件

Cutting Data Recommendations.

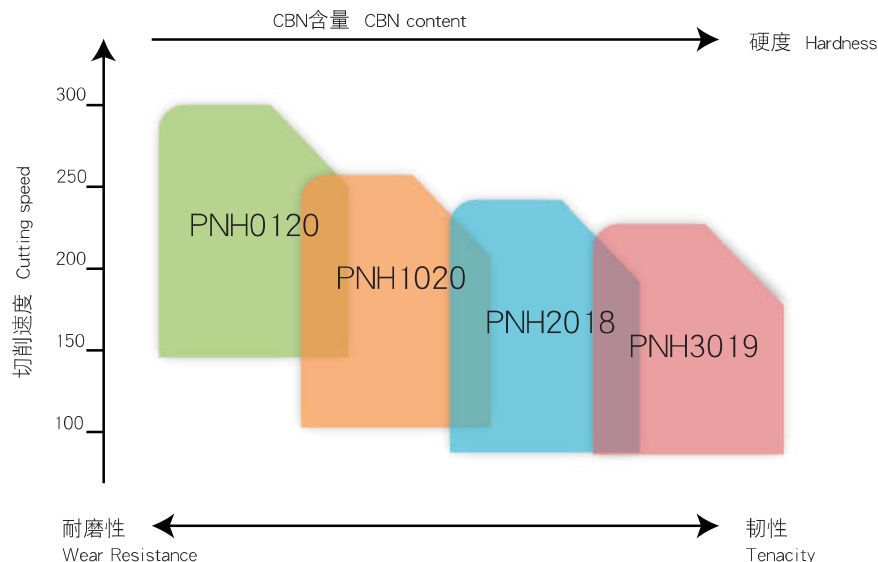
切削条件 Cutting condition recommendations	牌号 PCBN Grade			
	PNH0120	PNH1020	PNH2018	PNH3019
切削速度,vc (m/min) Cutting Speed	140 160 220 300	100 120 180 250	80 120 160 220	80 110 150 220
进给,fn (mm/r) Feed Rate	0.03 0.2	0.05 0.25	0.05 0.3	0.05 0.3
切削深度,AP (mm) Cutting Depth	常规MINI型 Mini Tipped PCBN Inserts 0.05 0.2	常规MINI型 Mini Tipped PCBN Inserts 0.05 0.5	常规MINI型 Mini Tipped PCBN Inserts 0.05 0.5	常规MINI型 Mini Tipped PCBN Inserts 0.05 0.5
	贯穿MINI型 Mini Solid Tipped PCBN Inserts 0.05 0.3	贯穿MINI型 Mini Solid Tipped PCBN Inserts 0.05 0.8	贯穿MINI型 Mini Solid Tipped PCBN Inserts 0.05 1.0	贯穿MINI型 Mini Solid Tipped PCBN Inserts 0.05 1.0
		贯穿重型 Heavy Cutting PCBN Inserts 0.1 1.2	贯穿重型 Heavy Cutting PCBN Inserts 0.1 2.0	贯穿重型 Heavy Cutting PCBN Inserts 0.1 2.0

沃尔德切削材料介绍

PCBN Material Introduction

■ 推荐使用范围

Application



■ PCBN贯穿式比PCBN复合片式寿命提高30%

Tool life competition between solid and standard tipped corners

测试工况: ISO 513 H05

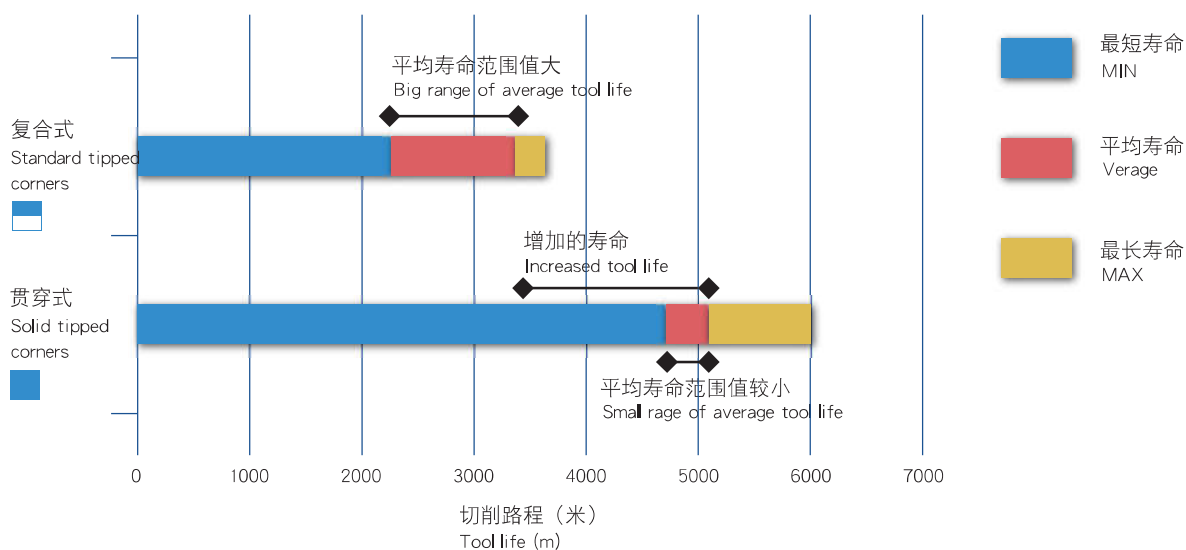
测试结果: 1.整体式比复合式寿命大幅增长。

2.整体式比复合式平均寿命范围值更小, 稳定性更高!

Testing results:

1. Solid tipped corners insert increase the tool life compared to the standard tipped corners insert.

2. The stability of solid tipped corners inserts is higher than standard tipped corners



为什么选用CBN刀具

PCBN Material Introduction

立方氮化硼（CBN）在1957年制造成功，成为一种新型人造超硬材料，CBN的硬度仅次于金刚石，CBN单晶的显微硬度为HV8000~9000，是目前已知的第二高硬度的物质，PCBN的硬度一般为HV2500~5000。因此用于加工高硬度材料时具有比硬质合金及陶瓷更高的耐磨性，CBN具有很高的抗氧化能力，在1000℃时也不产生氧化现象，与铁系材料在1200~1300℃时也不发生化学反应，所以使用CBN刀具时往往采用干切方式因此CBN材料在加工黑色金属材料方面具有独到之处。现在已经成为难加工材料的首选材料，其应用加工领域为：淬火钢，铸铁，高温合金和粉末冶金。

Cubic boron nitride is the second hardest material in the world invented successfully in 1957; the microhardness of CBN's single crystal is HV8000-9000 while the hardness of PCBN is HV2500-5000, so it is considerably better abrasive resistance than tungsten carbide and ceramics. With a higher ability of oxidation resistance within 1000 C, CBN will do not have any chemical reaction together with ferrous material in 1200-1300 C. So it is unique for CBN material dry cutting ferrous materials. The principal application areas for CBN cutting tools are hardened steels, cast irons and sintered irons as well as powder metallurgy components.



Characteristic

PCBN刀具的优点及特征

- 1、能够加工高质量的工件
- 2、提高工件加工效率
- 3、加工灵活性更强
- 4、设备投资减少
- 5、无需使用冷却液
- 6、切屑容易回收处理
- 7、使切屑更容易断屑排出

使用PCBN刀具的注意事项;

- 1、选择更大的刀柄尺寸
- 2、选择最短的刀具悬伸量
- 3、选择高强度的夹具
- 4、选择更大的工件装夹面积（薄壁零件）
- 5、选择PCBN刀具断续切削是无需使用切削液
- 6、硬车削合理选用切削液
- A、切削过程保持切削液流量一致
- B、控制被切削零件的热稳定性

Benefits and Features;

1. Excellent surface finish
2. High speed turning, high performance
3. More flexibility in machining
4. Less investment in machines
5. Not required coolant
6. Easier in recycling and treatment of chips
7. Easier in removal of outlet of chips

PCBN tools instruction;

1. Required larger dimension of holders
2. Required shorter extended length of cutting tools
3. Required high-duty of fixtures
4. Required larger clamping area of workpiece
- 5 No need use coolant in interrupted cutting
6. Properly applied coolant in turning hard steel
7. Kept the consistency of cutting fluid flow in machining
8. Controlled the thermal stability of work piece

□□	ISO	C	C	M	W	09	T3	04	1	N	S	010	20	05	CB	ST	30	S	PNH1020
		1	2	3	4	5	6	7	8	9	10	11	12	13	14	15	16	17	18

□□	ANSI	C	C	M	W	3	(2.5)	1	1	N	S	010	20	05	CB	ST	30	S	PNH1020
		1	2	3	4	5	6	7	8	9	10	11	12	13	14	15	16	17	18

1		刀片形状 Shape	
	H	正六边形 120°	
	O	正八边形 135°	D 55°
			E 75°
	P	正五边形 108°	M 86°
			V 35°
	R	圆形	W 六边形 80°
			L 长方形 90°
	S	正方形 90°	平行四边形
			A 85°
	T	正三角形 60°	B 82°
			K 55°

3		公差 ISO			Tolerance-ANSI			
	代号	允差mm			Code	inch		
	级	刀尖高m	厚度s	内切圆IC		m	ic	s
	C	±0.013	±0.025	±0.025	C	±.0005	±.001	±.001
	H	±0.013	±0.025	±0.013	H	±.0005	±.0005	±.001
	E	±0.025	±0.025	±0.025	E	±.001	±.001	±.001
	G	±0.025	±0.13	±0.025	G	±.001	±.001	±.005
	K	±0.013	±0.025	±0.05~±0.13	K	±.0005	±.002-.005	±.001
	M	±0.08~±0.18	±0.13	±0.05~±0.13	M	±.002-.005	±.002-.005	±.005
	U	±0.13~±0.38	±0.13	±0.08~±0.25	U	±.005-.012	±.005-.010	±.005

2		刀片后角 Clearance Angle	
	A		E
	B		F
	C		G
	D		N
			P
			O

5		内切圆直径 Inscribed Circle Dia.							
ISO		ANSI							
切刃长度 (按刀片形状)		内切圆直径							
C	D	R	S	T	V	W	mm	Code	IC Size
S4	04	03	03	06	-	-	3.97	(1.2)	5/32
04	05	04	04	08	08	S3	4.76	(1.5)	3/16
05	06	05	05	09	09	03	5.56	(1.8)	7/32
-	-	06	-	-	-	-	6	-	-
06	07	06	06	11	11	04	6.35	2	1/4
08	09	07	07	13	13	05	7.94	(2.5)	5/16
-	-	08	-	-	-	-	8	-	-
09	11	09	09	16	16	06	9.525	3	3/8
-	-	10	-	-	-	-	10	-	-
-	-	12	-	-	-	-	12	-	-
12	15	12	12	22	22	08	12.7	4	1/2
16	19	15	15	27	27	10	15.875	5	5/8
-	-	16	-	-	-	-	16	-	-
19	23	19	19	33	33	13	19.05	6	3/4
-	-	20	-	-	-	-	20	-	-
22	27	22	22	38	38	15	22.225	7	7/8
-	-	25	-	-	-	-	25	-	-
25	31	25	25	44	44	17	25.4	8	1
32	38	31	31	54	54	21	31.75	10	1-1/4
-	-	32	-	-	-	-	32	-	-

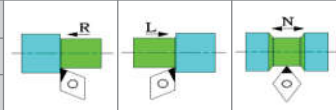
6		刀片厚度 Thickness	
ISO		ANSI	
代号	尺寸	Code	Size
S	mm	S	inch
01	1.59	1	1/16
02	2.38	(1.5)	3/32
T2	2.78	-	-
03	3.18	2	1/8
T3	3.97	(2.5)	5/32
04	4.76	3	3/16
05	5.56	(3.5)	7/32
06	6.35	4	1/4
07	7.94	5	5/16
09	9.525	6	3/8

7		刀片R角 Nose radius	
ISO		ANSI	
代号	尺寸	Code	Size
Rε	mm	Rε	inch
00	锋利	00	.000
003	0.03	(0.1)	.001
01	0.1	(0.2)	.004
02	0.2	(0.5)	.008
04	0.4	1	1/64
08	0.8	2	1/32
12	1.2	3	3/64
16	1.6	4	1/16
20	2.0	5	5/64
24	2.4	6	3/32
28	2.8	7	7/64
32	3.2	8	1/8
M0	圆形刀片	0	circular

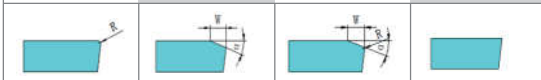
4		固定、断削槽 Standard, Chipbreaker	
	N		G
	B		H
	R		W
	F		T
	C		Q
	A		J
	M		U 其它异形 X

8	刃数 Edges					
代号 Code	1	2	3	4	6	8
含义	一刃	二刃	三刃	四刃	六刃	八刃
notes	1 edge	2 edges	3 edges	4 edges	6 edges	8 edges

9	切削方向 Cutting direction		
代号 Code	R	L	N
含义	正手	反手	无方向
notes	R	L	N



10	主切削刃形状 Cutting Edge Design			
E	T	S	F	
钝化	倒棱	倒棱+钝化	锋利刃口	
Honed	Chamfered	Chamfered+Honed	Sharp Edge	

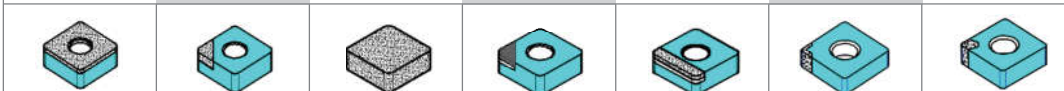


11	倒棱宽度 Chamfered Width					
代号 Code	000	005	010	015	020	030
尺寸 Size	-	0.05	0.1	0.15	0.2	0.3

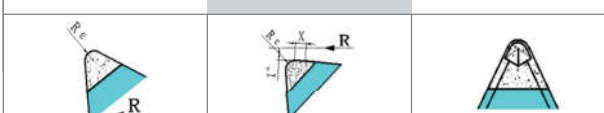
12	倒棱角度 Chamfered Angle								
代号 Code	α	00	10	15	20	25	30	35	45
尺寸 Size	°	-	10	15	20	25	30	35	45

13	倒圆大小 Honed Size					
代号 Code	00	02	05	10	20	30
尺寸 Size	-	0.002	0.005	0.01	0.02	0.03

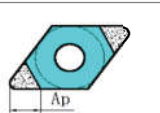
14	刀片结构 Insert type					
SF	SL	SS	CB	CS	SWW	SWU
整面复合片	整体CBN局部	整体CBN	CBN复合片标准	CBN复合片整条边	整体CBN(W形)贯穿	整体CBN(U形)贯穿
Full Face	Solid Tipped Corner	Solid CBN	Standard Tipped Corners	Standard Full Edge	Solid Tipped Corners Type 'W'	Solid Tipped Corners Type 'U'



15	刃口形式 Cutting Edge Design		
ST	WG	CB	
圆角R刀片	修光刃	断屑槽刀片	
Nose Radius	Wiper	Chip Breaker	



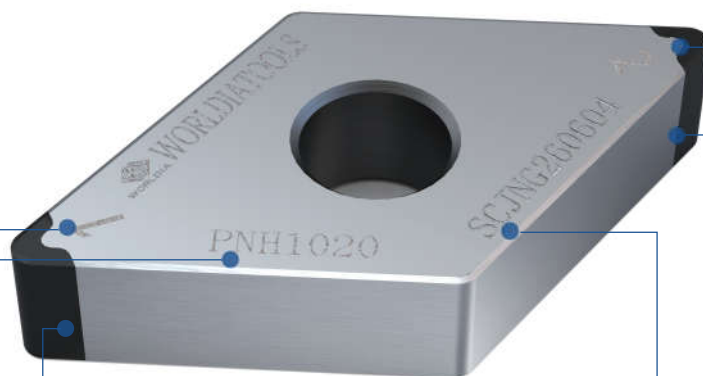
16	主切削刃长度 Cutting Edge Length					
代号 Code	Ap	22	25	28	30	40
尺寸 Size		2.2	2.5	2.8	3.0	4.0



17	表面处理形式 Surface Treatment	
S	标准未涂层	C1
	Uncoated	
		研发中 R & D

贯穿迷你型刀片

Mini Solid Tipped PCBN Inserts



贯穿式焊接，双面使用的同时又实现了更大的切削深度（AP=0.8mm），从而提高了加工效率！
The mini solid tipped corners inserts can use double sides which is not only achieved the larger cutting depth, but also to improve the machining efficiency. Max AP=0.8mm,

订单批号的标识更方便质量跟踪和信息的反馈。
Clear Serial Number on carbide body makes it easily to track the inserts quality and the feedback information.

刀片PCBN材质的标识方便识别。
Clear mark of PCBN material makes it easily to recognize.

采用特种焊接工艺，波浪形焊接面能有效增加焊接面积，焊接更牢固。
Special brazing technology, the W shape braze joint increased the brazed area which makes it more firmly.

所有刀尖序号的标识，更方便管理。
Clear numbers of tips make the inserts easily to management.

采用波浪型的小刀头设计，经济实用，性价比更高。
Mini tip, less cost and better performance.

贯穿迷你型刀片

Mini Solid Tipped PCBN Inserts

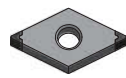
CN 80° 菱形 • 负型 • 有孔
PCBN Negative Inserts



标准型	锋利型	增强型
S0102510	S0101505	S0152520
Standard cutting edge	Sharp cutting edge	Strong cutting edge

Shape 图示	公制代码 ISO	Tip Shape 刀片结构	H				英制代码 ANSI	Tip Shape 刀片结构	Dimensions in mm 刀片参数				
			PNH1020	PNH1020	PNH2018	PNH3019			ic	Ød	s	r	la
	CNGA 120402-4NS0102510	SWWST22S	●	●	●	●	CNGA 43(0.5)-4NS0102510	SWWST22S	12.7	5.16	4.76	0.2	2.2
	-4NS0101505		●	●	●	●	-4NS0101505						
	-4NS0152520		●	●	●	●	-4NS0152520						
	CNGA 120404-4NS0102510		●	●	●	●	CNGA 431-4NS0102510						
	-4NS0101505		●	●	●	●	-4NS0101505						
	-4NS0152520		●	●	●	●	-4NS0152520						
	CNGA 120408-4NS0102510		●	●	●	●	CNGA 432-4NS0102510						
	-4NS0101505		●	●	●	●	-4NS0101505						
	-4NS0152520		●	●	●	●	-4NS0152520						
	CNGA 120412-4NS0102510		●	●	●	●	CNGA 433-4NS0102510						
	-4NS0101505		●	●	●	●	-4NS0101505						
	-4NS0152520		●	●	●	●	-4NS0152520						

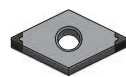
DN 55° 菱形 • 负型 • 有孔
PCBN Negative Inserts



标准型	锋利型	增强型
S0102510	S0101505	S0152520
Standard cutting edge	Sharp cutting edge	Strong cutting edge

Shape 图示	公制代码 ISO	Tip Shape 刀片结构	H				英制代码 ANSI	Tip Shape 刀片结构	Dimensions in mm 刀片参数				
			PNH1020	PNH1020	PNH2018	PNH3019			ic	Ød	s	r	la
	DNGA 150402-4NS0102510	SWWST22S	●	●	●	●	DNGA 43(0.5)-4NS0102510	SWWST22S	12.7	5.16	4.76	0.2	2.2
	-4NS0101505		●	●	●	●	-4NS0101505						
	-4NS0152520		●	●	●	●	-4NS0152520						
	DNGA 150404-4NS0102510		●	●	●	●	DNGA 431-4NS0102510						
	-4NS0101505		●	●	●	●	-4NS0101505						
	-4NS0152520		●	●	●	●	-4NS0152520						
	DNGA 150408-4NS0102510		●	●	●	●	DNGA 432-4NS0102510						
	-4NS0101505		●	●	●	●	-4NS0101505						
	-4NS0152520		●	●	●	●	-4NS0152520						
	DNGA 150412-4NS0102510		●	●	●	●	DNGA 433-4NS0102510						
	-4NS0101505		●	●	●	●	-4NS0101505						
	-4NS0152520		●	●	●	●	-4NS0152520						

DN 55° 菱形 • 负型 • 有孔
PCBN Negative Inserts



标准型	锋利型	增强型
S0102510	S0101505	S0152520
Standard cutting edge	Sharp cutting edge	Strong cutting edge

图示	公制代码 ISO	Tip Shape 刀片结构	H				英制代码 ANSI	Tip Shape 刀片结构	刀片参数				
			PNH1020	PNH1020	PNH2018	PNH3019			ic	Ød	s	r	la
	DNGA 150602-4NS0102510	SWWSL22S	●	●	●	●	DNGA 43(0.5)-4NS0102510	SWWSL22S	12.7	5.16	6.35	0.2	2.2
	-4NS0101505		●	●	●	●	-4NS0101505						
	-4NS0152520		●	●	●	●	-4NS0152520						
	DNGA 150604-4NS0102510		●	●	●	●	DNGA 441-4NS0102510						
	-4NS0101505		●	●	●	●	-4NS0101505						
	-4NS0152520		●	●	●	●	-4NS0152520						
	DNGA 150608-4NS0102510		●	●	●	●	DNGA 442-4NS0102510						
	-4NS0101505		●	●	●	●	-4NS0101505						
	-4NS0152520		●	●	●	●	-4NS0152520						
	DNGA 150612-4NS0102510		●	●	●	●	DNGA 443-4NS0102510						
	-4NS0101505		●	●	●	●	-4NS0101505						
	-4NS0152520		●	●	●	●	-4NS0152520						

示例 (Example) : 公制 ISO: DNGA 150602-4NS0102510SWWST22S PNH1020
英制 ANSI: DNGA 43(0.5)-4NS0102510SWWST22S PNH1020

贯穿迷你型刀片

Mini Solid Tipped PCBN Inserts

编码细则请参考B01-B02页

The rule of insert code please refer to page B01-B02

SN

90° 正方形 · 负型 · 有孔

PCBN Negative Inserts



标准型	锋利型	增强型
S0102510	S0101505	S0152520
Standard cutting edge	Sharp cutting edge	Strong cutting edge

Shape 图示	公制代码 ISO	Tip Shape 刀片结构	H				英制代码 ANSI	Tip Shape 刀片结构	Dimensions in mm 刀片参数				
			PNH0120	PNH1020	PNH2018	PNH3019			ic	Ød	s	r	la
	SNGA 120402-8NS0102510	SWWST22S	●	●	●	●	SNGA43(0.5)-8NS0102510	SWWST22S	12.7	5.16	4.76	0.2	2.2
	-8NS0101505		●	●	●	●	-8NS0101505						
	-8NS0152520		●	●	●	●	-8NS0152520						
	SNGA 120404-8NS0102510		●	●	●	●	SNGA431-8NS0102510						
	-8NS0101505		●	●	●	●	-8NS0101505						
	-8NS0152520		●	●	●	●	-8NS0152520						
	SNGA 120408-8NS0102510		●	●	●	●	SNGA432-8NS0102510						
	-8NS0101505		●	●	●	●	-8NS0101505						
	-8NS0152520		●	●	●	●	-8NS0152520						
	SNGA 120412-8NS0102510		●	●	●	●	SNGA433-8NS0102510						
	-8NS0101505		●	●	●	●	-8NS0101505						
	-8NS0152520		●	●	●	●	-8NS0152520						

TN

60° 三角形 · 负型 · 有孔

PCBN Negative Inserts



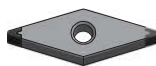
标准型	锋利型	增强型
S0102510	S0101505	S0152520
Standard cutting edge	Sharp cutting edge	Strong cutting edge

Shape 图示	公制代码 ISO	Tip Shape 刀片结构	H				英制代码 ANSI	Tip Shape 刀片结构	Dimensions in mm 刀片参数				
			PNH0120	PNH1020	PNH2018	PNH3019			ic	Ød	s	r	la
	TNGA 160402-6NS0102510	SWWST22S	●	●	●	●	TNGA33(0.5)-6NS0102510	SWWST22S	9.525	3.81	4.76	0.2	2.2
	-6NS0101505		●	●	●	●	-6NS0101505						
	-6NS0152520		●	●	●	●	-6NS0152520						
	TNGA 160404-6NS0102510		●	●	●	●	TNGA331-6NS0102510						
	-6NS0101505		●	●	●	●	-6NS0101505						
	-6NS0152520		●	●	●	●	-6NS0152520						
	TNGA 160408-6NS0102510		●	●	●	●	TNGA332-6NS0102510						
	-6NS0101505		●	●	●	●	-6NS0101505						
	-6NS0152520		●	●	●	●	-6NS0152520						
	TNGA 160412-6NS0102510		●	●	●	●	TNGA333-6NS0102510						
	-6NS0101505		●	●	●	●	-6NS0101505						
	-6NS0152520		●	●	●	●	-6NS0152520						

VN

35° 菱形 · 负型 · 有孔

PCBN Negative Inserts



标准型	锋利型	增强型
S0102510	S0101505	S0152520
Standard cutting edge	Sharp cutting edge	Strong cutting edge

图示	公制代码 ISO	Tip Shape 刀片结构	H				英制代码 ANSI	Tip Shape 刀片结构	刀片参数				
			PNH0120	PNH1020	PNH2018	PNH3019			ic	Ød	s	r	la
	VNGA 160402-4NS0102510	SWWST22S	●	●	●	●	VNGA33(0.5)-4NS0102510	SWWST22S	9.525	3.81	4.76	0.2	2.2
	-4NS0101505		●	●	●	●	-4NS0101505						
	-4NS0152520		●	●	●	●	-4NS0152520						
	VNGA 160404-4NS0102510		●	●	●	●	VNGA341-4NS0102510						
	-4NS0101505		●	●	●	●	-4NS0101505						
	-4NS0152520		●	●	●	●	-4NS0152520						
	VNGA 160408-4NS0102510		●	●	●	●	VNGA342-4NS0102510						
	-4NS0101505		●	●	●	●	-4NS0101505						
	-4NS0152520		●	●	●	●	-4NS0152520						
	VNGA 160412-4NS0102510		●	●	●	●	VNGA343-4NS0102510						
	-4NS0101505		●	●	●	●	-4NS0101505						
	-4NS0152520		●	●	●	●	-4NS0152520						

示例 (Example) : 公制 ISO: VNGA 160412-4NS0102510SWWST22S PNH1020

英制 ANSI: VNGA343-4NS0102510SWWST22S PNH1020

贯穿迷你型刀片

Mini Solid Tipped PCBN Inserts

WN

80° 六边形 • 负型 • 有孔
PCBN Negative Inserts



标准型	锋利型	增强型
S0102510	S0101505	S0152520
Standard cutting edge	Sharp cutting edge	Strong cutting edge

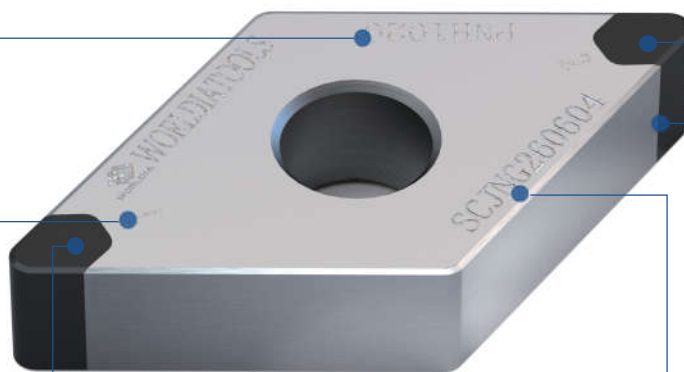
Shape 图示	公制代码 ISO	Tip Shape 刀片结构	H				英制代码 ANSI	Tip Shape 刀片结构	Dimensions in mm 刀片参数					
			PNH0120	PNH1020	PNH2018	PNH3019			ic	Ød	s	r	la	
	WNGA080402-6NS0102510	SWWST22S	●	●	●	●	WNGA43(0.5)-6NS0102510	SWWST22S	12.7	5.16	4.76	2.2		
	-6NS0101505		●	●	●	●	-6NS0101505							0.2
	-6NS0152520		●	●	●	●	-6NS0152520							0.4
	WNGA080404-6NS0102510		●	●	●	●	WNGA431-6NS0102510							0.8
	-6NS0101505		●	●	●	●	-6NS0101505							1.2
	-6NS0152520		●	●	●	●	-6NS0152520							
	WNGA080408-6NS0102510		●	●	●	●	WNGA432-6NS0102510							
	-6NS0101505		●	●	●	●	-6NS0101505							
	-6NS0152520		●	●	●	●	-6NS0152520							
	WNGA080412-6NS0102510		●	●	●	●	WNGA433-6NS0102510							
	-6NS0101505		●	●	●	●	-6NS0101505							
	-6NS0152520		●	●	●	●	-6NS0152520							

示例 (Example) : 公制 ISO: WNGA080402-6NS0102505SLSWW22S PNH1020
英制 ANSI: WNGA43(0.5)-6NS0102505SLSWW22S PNH1020



重切削型刀片

Heavy Cutting PCBN Inserts



优质CBN材质与特殊的U形刀头设计增大了切削量，加工效率更高，经济实用，性价比高！
Premium CBN materials,u shape design increases the cutting depth and improves the machining efficiency ,it is also less cost and better performance.

订单批号的标识更方便质量跟踪和信息的反馈。
Clear Serial Number on carbide body makes it easily to track the inserts quality and the feedback information.

刀片PCBN材质的标识方便识别。
Clear mark of PCBN material makes it easily to recognize.

采用特种焊接工艺，深U形焊接面有效增加焊接面积，焊接牢固！
Mini tip,less cost and better performance.

所有刀尖序号的标识，更方便管理。
Clear numbers of tips make the inserts easily to management.

贯穿式焊接，双面使用的同时有实现了更大的切削深度（AP=1.5mm）
The solid tipped corners inserts can use double sides which is not only achieved the larger cutting depth, but also to improve the machining efficiency. (AP=1.5mm)

重切削型刀片

Heavy Cutting PCBN Inserts

CN

80° 菱形 • 负型 • 有孔

PCBN Negative Inserts



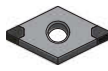
标准型	锋利型	增强型
S0102510	S0151505	S0152520
Standard cutting edge	Sharp cutting edge	Strong cutting edge

Shape 图示	公制代码 ISO	Tip Shape 刀片结构	H				英制代码 ANSI	Tip Shape 刀片结构	Dimensions in mm 刀片参数				
			PNH1020	PNH1020	PNH2018	PNH3019			ic	ød	s	r	la
	CNGA 120402-4NS0102510	SWUST25S	●	●	●	●	DNGA43(0.5)-4NS0102510	SWUST25S	12.7	5.16	4.76	0.2	2.5
	-4NS0151505		●	●	●	●	-4NS0151505						
	-4NS0152520		●	●	●	●	-4NS0152520						
	CNGA 120404-4NS0102510		●	●	●	●	CNGA431-4NS0102510						
	-4NS0151505		●	●	●	●	-4NS0151505						
	-4NS0152520		●	●	●	●	-4NS0152520						
	CNGA 120408-4NS0102510		●	●	●	●	CNGA432-4NS0102510						
	-4NS0151505		●	●	●	●	-4NS0151505						
	-4NS0152520		●	●	●	●	-4NS0152520						
	CNGA 120412-4NS0102510		●	●	●	●	CNGA433-4NS0102510						
	-4NS0151505		●	●	●	●	-4NS0151505						
	-4NS0152520		●	●	●	●	-4NS0152520						

DN

55° 菱形 • 负型 • 有孔

PCBN Negative Inserts



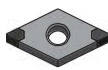
标准型	锋利型	增强型
S0102510	S0151505	S0152520
Standard cutting edge	Sharp cutting edge	Strong cutting edge

Shape 图示	公制代码 ISO	Tip Shape 刀片结构	H				英制代码 ANSI	Tip Shape 刀片结构	Dimensions in mm 刀片参数				
			PNH1020	PNH1020	PNH2018	PNH3019			ic	ød	s	r	la
	DNGA 150402-4NS0102510	SWUST25S	●	●	●	●	DNGA43(0.5)-4NS0102510	SWUST25S	12.7	5.16	4.76	0.2	2.5
	-4NS0151505		●	●	●	●	-4NS0151505						
	-4NS0152520		●	●	●	●	-4NS0152520						
	DNGA 150404-4NS0102510		●	●	●	●	DNGA431-4NS0102510						
	-4NS0151505		●	●	●	●	-4NS0151505						
	-4NS0152520		●	●	●	●	-4NS0152520						
	DNGA 150408-4NS0102510		●	●	●	●	DNGA432-4NS0102510						
	-4NS0151505		●	●	●	●	-4NS0151505						
	-4NS0152520		●	●	●	●	-4NS0152520						
	DNGA 150412-4NS0102510		●	●	●	●	DNGA433-4NS0102510						
	-4NS0151505		●	●	●	●	-4NS0151505						
	-4NS0152520		●	●	●	●	-4NS0152520						

DN

55° 菱形 • 负型 • 有孔

PCBN Negative Inserts



标准型	锋利型	增强型
S0102510	S0151505	S0152520
Standard cutting edge	Sharp cutting edge	Strong cutting edge

Shape 图示	公制代码 ISO	Tip Shape 刀片结构	H				英制代码 ANSI	Tip Shape 刀片结构	Dimensions in mm 刀片参数				
			PNH1020	PNH1020	PNH2018	PNH3019			ic	ød	s	r	la
	DNGA 150602-4NS0102510	SWUST25S	●	●	●	●	DNGA43(0.5)-4NS0102510	SWUST25S	12.7	5.16	6.35	0.2	2.5
	-4NS0151505		●	●	●	●	-4NS0151505						
	-4NS0152520		●	●	●	●	-4NS0152520						
	DNGA 150604-4NS0102510		●	●	●	●	DNGA431-4NS0102510						
	-4NS0151505		●	●	●	●	-4NS0151505						
	-4NS0152520		●	●	●	●	-4NS0152520						
	DNGA 150608-4NS0102510		●	●	●	●	DNGA432-4NS0102510						
	-4NS0151505		●	●	●	●	-4NS0151505						
	-4NS0152520		●	●	●	●	-4NS0152520						
	DNGA 150612-4NS0102510		●	●	●	●	DNGA433-4NS0102510						
	-4NS0151505		●	●	●	●	-4NS0151505						
	-4NS0152520		●	●	●	●	-4NS0152520						

示例 (Example) : 公制 ISO: DNGA 150612-4NS0102510SWUST25S PNH1020
英制 ANSI: DNGA433-4NS0102510SWUST25S PNH1020

重切削型刀片

Heavy Cutting PCBN Inserts

编码细则请参考B01-B02页

The rule of insert code please refer to page B01-B02

SN

90° 正方形 · 负型 · 有孔

PCBN Negative Inserts



标准型	锋利型	增强型
S0102510	S0151505	S0152520
Standard cutting edge	Sharp cutting edge	Strong cutting edge

Shape 图示	公制代码 ISO	Tip Shape 刀片结构	H				英制代码 ANSI	Tip Shape 刀片结构	Dimensions in mm 刀片参数				
			PNH0120	PNH1020	PNH2018	PNH3019			ic	Ød	s	r	la
	SNGA 120402-8NS0152510	SWUST25S	●	●	●	●	SNGA43(0.5)-8NS0152510	SWUST25S	12.7	5.16	4.76	0.2	2.5
	-8NS0151505		●	●	●	●	-8NS0151505						
	-8NS0152520		●	●	●	●	-8NS0152520						
	SNGA 120404-8NS0152510		●	●	●	●	SNGA431-8NS0152510						
	-8NS0151505		●	●	●	●	-8NS0151505						
	-8NS0152520		●	●	●	●	-8NS0152520						
	SNGA 120408-8NS0152510		●	●	●	●	SNGA432-8NS0152510						
	-8NS0151505		●	●	●	●	-8NS0151505						
	-8NS0152520		●	●	●	●	-8NS0152520						
	SNGA 120412-8NS0152510		●	●	●	●	SNGA433-8NS0152510						
	-8NS0151505		●	●	●	●	-8NS0151505						
	-8NS0152520		●	●	●	●	-8NS0152520						

TN

60° 三角形 · 负型 · 有孔

PCBN Negative Inserts



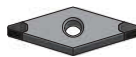
标准型	锋利型	增强型
S0102510	S0151505	S0152520
Standard cutting edge	Sharp cutting edge	Strong cutting edge

Shape 图示	公制代码 ISO	Tip Shape 刀片结构	H				英制代码 ANSI	Tip Shape 刀片结构	Dimensions in mm 刀片参数				
			PNH0120	PNH1020	PNH2018	PNH3019			ic	Ød	s	r	la
	TNGA 160402-6NS0152510	SWUST25S	●	●	●	●	TNGA33(0.5)-6NS0152510	SWUST25S	9.525	3.81	4.76	0.2	2.5
	-6NS0151505		●	●	●	●	-6NS0151505						
	-6NS0152520		●	●	●	●	-6NS0152520						
	TNGA 160404-6NS0152510		●	●	●	●	TNGA331-6NS0152510						
	-6NS0151505		●	●	●	●	-6NS0151505						
	-6NS0152520		●	●	●	●	-6NS0152520						
	TNGA 160408-6NS0152510		●	●	●	●	TNGA332-6NS0152510						
	-6NS0151505		●	●	●	●	-6NS0151505						
	-6NS0152520		●	●	●	●	-6NS0152520						
	TNGA 160412-6NS0152510		●	●	●	●	TNGA333-6NS0152510						
	-6NS0151505		●	●	●	●	-6NS0151505						
	-6NS0152520		●	●	●	●	-6NS0152520						

VN

35° 菱形 · 负型 · 有孔

PCBN Negative Inserts



标准型	锋利型	增强型
S0102510	S0151505	S0152520
Standard cutting edge	Sharp cutting edge	Strong cutting edge

Shape 图示	公制代码 ISO	Tip Shape 刀片结构	H				英制代码 ANSI	Tip Shape 刀片结构	Dimensions in mm 刀片参数				
			PNH0120	PNH1020	PNH2018	PNH3019			ic	Ød	s	r	la
	VNGA 160402-4NS0152510	SWUST25S	●	●	●	●	VNGA33(0.5)-4NS0152510	SWUST25S	9.525	3.81	4.76	0.2	2.5
	-4NS0151505		●	●	●	●	-4NS0151505						
	-4NS0152520		●	●	●	●	-4NS0152520						
	VNGA 160404-4NS0152510		●	●	●	●	VNGA331-4NS0152510						
	-4NS0151505		●	●	●	●	-4NS0151505						
	-4NS0152520		●	●	●	●	-4NS0152520						
	VNGA 160408-4NS0152510		●	●	●	●	VNGA332-4NS0152510						
	-4NS0151505		●	●	●	●	-4NS0151505						
	-4NS0152520		●	●	●	●	-4NS0152520						
	VNGA 160412-4NS0152510		●	●	●	●	VNGA333-4NS0152510						
	-4NS0151505		●	●	●	●	-4NS0151505						
	-4NS0152520		●	●	●	●	-4NS0152520						

示例 (Example) : 公制 ISO: VNGA 160412-4NS0102510SWUST25S PNH1020

英制 ANSI: VNGA333-4NS0102510SWUST25S PNH1020

重切削型刀片

Heavy Cutting PCBN Inserts

WN

80° 六边形 • 负型 • 有孔

PCBN Negative Inserts



标准型	锋利型	增强型
S0102510	S0151505	S0152520
Standard cutting edge	Sharp cutting edge	Strong cutting edge

Shape 图示	公制代码 ISO	Tip Shape 刀片结构	H				英制代码 ANSI	Tip Shape 刀片结构	Dimensions in mm 刀片参数				
			PNH0120	PNH1020	PNH2018	PNH3019			ic	Ød	s	r	la
	WNGA080402-6NS0152510	SWUST25S	●	●	●	●	WNGA43(0.5)-6NS0152510	SWUST25S	12.7	5.16	4.76	2.5	0.2
	-6NS0151505		●	●	●	●	-6NS0151505						
	-6NS0152520		●	●	●	●	-6NS0152520						
	WNGA080404-6NS0152510		●	●	●	●	WNGA431-6NS0152510						
	-6NS0151505		●	●	●	●	-6NS0151505						
	-6NS0152520		●	●	●	●	-6NS0152520						
	WNGA080408-6NS0152510		●	●	●	●	WNGA432-6NS0152510						
	-6NS0151505		●	●	●	●	-6NS0151505						
	-6NS0152520		●	●	●	●	-6NS0152520						
	WNGA080412-6NS0152510		●	●	●	●	WNGA433-6NS0152510						
-6NS0151505	●	●	●	●	-6NS0151505								
-6NS0152520	●	●	●	●	-6NS0152520								

示例 (Example) : 公制 ISO: WNGA160412-4NS0102510SWUST25S PNH1020
 英制 ANSI: WNGA333-4NS0102510SWUST25S PNH1020



常规迷你型刀片

Mini Tipped PCBN Inserts



采用特种焊接工艺，焊接牢固！
Special brazing technology, firmly brazed.

订单批号的标识更方便质量跟踪和信息的反馈。
Clear Serial Number on carbide body makes it easily to track the inserts quality and the feedback information.

刀片PCBN材质的标识方便识别。
Clear mark of PCBN material makes it easily to recognize.

优质CBN材质、小刀尖，经济实用，性价比高。
Premium CBN materials, mini tip, less cost and better performance.

所有刀尖序号的标识，更方便管理。
Clear numbers of tips make the inserts easily to management.

mini刀头的设计实现了成本的降低，切深亦可达
($a_p=0.5\text{mm}$)！
Mini tip inserts can reduce the cost of cutting tools.
The max $a_p=0.5\text{mm}$.

常规迷你型刀片

Mini Tipped PCBN Inserts



80° 菱形 • 正型 • 有孔

PCBN Positive Inserts



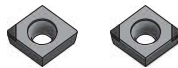
标准型	锋利型	增强型
S0102510	S0101505	S0152520
Standard cutting edge	Sharp cutting edge	Strong cutting edge

Shape 图示	公制代码 ISO	Tip Shape 刀片结构	H				英制代码 ANSI	Tip Shape 刀片结构	Dimensions in mm 刀片参数				
			PNH0120	PNH1020	PNH2018	PNH3019			ic	Ød	s	r	la
	CCGW060202-1NS0102510	SLST22S	●	●	●	●	CCGW2(1.5)(0.5)-1NS0102510	SLST22S	6.35	2.8	2.38	0.2	2.2
	-1NS0101505		●	●	●	●	-1NS0101505						
	-1NS0152520		●	●	●	●	-1NS0152520						
	CCGW060204-1NS0102510		●	●	●	●	CCGW2(1.5)1-1NS0102510						
	-1NS0101505		●	●	●	●	-1NS0101505						
	-1NS0152520		●	●	●	●	-1NS0152520						
	CCGW060208-1NS0102510		●	●	●	●	CCGW2(1.5)2-1NS0102510						
	-1NS0101505		●	●	●	●	-1NS0101505						
	-1NS0152520		●	●	●	●	-1NS0152520						
	CCGW060202-2NS0102510	SLST22S	●	●	●	●	CCGW2(1.5)(0.5)-2NS0102510	SLST22S	6.35	2.8	2.38	0.2	2.2
	-2NS0101505		●	●	●	●	-2NS0101505						
	-2NS0152520		●	●	●	●	-2NS0152520						
	CCGW060204-2NS0102510		●	●	●	●	CCGW2(1.5)1-2NS0102510						
	-2NS0101505		●	●	●	●	-2NS0101505						
	-2NS0152520		●	●	●	●	-2NS0152520						
	CCGW060208-2NS0102510		●	●	●	●	CCGW2(1.5)2-2NS0102510						
	-2NS0101505		●	●	●	●	-2NS0101505						
	-2NS0152520		●	●	●	●	-2NS0152520						



80° 菱形 • 正型 • 有孔

PCBN Positive Inserts



标准型	锋利型	增强型
S0102510	S0101505	S0152520
Standard cutting edge	Sharp cutting edge	Strong cutting edge

Shape 图示	公制代码 ISO	Tip Shape 刀片结构	H				英制代码 ANSI	Tip Shape 刀片结构	Dimensions in mm 刀片参数				
			PNH0120	PNH1020	PNH2018	PNH3019			ic	Ød	s	r	la
	CCGW09T302-1NS0102510	SLST22S	●	●	●	●	CCGW3(2.5)(0.5)-1NS0102510	SLST22S	9.525	4.4	3.97	0.2	2.2
	-1NS0101505		●	●	●	●	-1NS0101505						
	-1NS0152520		●	●	●	●	-1NS0152520						
	CCGW09T304-1NS0102510		●	●	●	●	CCGW3(2.5)1-1NS0102510						
	-1NS0101505		●	●	●	●	-1NS0101505						
	-1NS0152520		●	●	●	●	-1NS0152520						
	CCGW09T308-1NS0102510		●	●	●	●	CCGW3(2.5)2-1NS0102510						
	-1NS0101505		●	●	●	●	-1NS0101505						
	-1NS0152520		●	●	●	●	-1NS0152520						
	CCGW09T302-2NS0102510	SLST22S	●	●	●	●	CCGW3(2.5)(0.5)-2NS0102510	SLST22S	9.525	4.4	3.97	0.2	2.2
	-2NS0101505		●	●	●	●	-2NS0101505						
	-2NS0152520		●	●	●	●	-2NS0152520						
	CCGW09T304-2NS0102510		●	●	●	●	CCGW3(2.5)1-2NS0102510						
	-2NS0101505		●	●	●	●	-2NS0101505						
	-2NS0152520		●	●	●	●	-2NS0152520						
	CCGW09T308-2NS0102510		●	●	●	●	CCGW3(2.5)2-2NS0102510						
	-2NS0101505		●	●	●	●	-2NS0101505						
	-2NS0152520		●	●	●	●	-2NS0152520						

示例 (Example) : 公制 ISO: CCGW09T308-2NS0102510SLST22S PNH1020
英制 ANSI: CCGW3(2.5)2-2NS0102510SLST22S PNH1020



常规迷你型刀片

Mini Tipped PCBN Inserts

编码细则请参考B01-B02页

The rule of insert code please refer to page B01-B02

CC

80° 菱形 • 正型 • 有孔

PCBN Positive Inserts



标准型	锋利型	增强型
S0102510	S0101505	S0152520
Standard cutting edge	Sharp cutting edge	Strong cutting edge

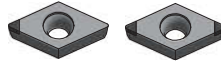
Shape 图示	公制代码 ISO	Tip Shape 刀片结构	H			英制代码 ANSI	Tip Shape 刀片结构	Dimensions in mm 刀片参数					
			PNH0120	PNH1020	PNH2018			PNH3019	ic	∅d	s	r	la
	CCGW120402-1NS0102510	SLST22S	●	●	●	●	CCGW43(0.5)-1NS0102510	SLST22S	12.7	5.5	4.46	2.2	0.2
	-1NS0101505		●	●	●	●	-1NS0101505						0.4
	-1NS0152520		●	●	●	●	-1NS0152520						0.8
	CCGW120404-1NS0102510		●	●	●	●	CCGW431-1NS0102510						1.2
	-1NS0101505		●	●	●	●	-1NS0101505						
	-1NS0152520		●	●	●	●	-1NS0152520						
	CCGW120408-1NS0102510		●	●	●	●	CCGW432-1NS0102510						
	-1NS0101505		●	●	●	●	-1NS0101505						
	-1NS0152520		●	●	●	●	-1NS0152520						
	CCGW120412-1NS0102510		●	●	●	●	CCGW433-1NS0102510						
-1NS0101505	●	●	●	●	-1NS0101505								
-1NS0152520	●	●	●	●	-1NS0152520								
	CCGW120402-2NS0102510	SLST22S	●	●	●	●	CCGW43(0.5)-2NS0102510	SLST22S	12.7	5.5	4.46	2.2	0.2
	-2NS0101505		●	●	●	●	-2NS0101505						0.4
	-2NS0152520		●	●	●	●	-2NS0152520						0.8
	CCGW120404-2NS0102510		●	●	●	●	CCGW431-2NS0102510						1.2
	-2NS0101505		●	●	●	●	-2NS0101505						
	-2NS0152520		●	●	●	●	-2NS0152520						
	CCGW120408-2NS0102510		●	●	●	●	CCGW432-2NS0102510						
	-2NS0101505		●	●	●	●	-2NS0101505						
	-2NS0152520		●	●	●	●	-2NS0152520						
	CCGW120412-2NS0102510		●	●	●	●	CCGW433-2NS0102510						
-2NS0101505	●	●	●	●	-2NS0101505								
-2NS0152520	●	●	●	●	-2NS0152520								

示例 (Example) : 公制 ISO: CCGW120408-2NS0102505SLST22S PNH1020
英制 ANSI: CCGW432-2NS0102505SLST22S PNH1020

常规迷你型刀片

Mini Tipped PCBN Inserts

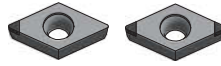
DC 55° 菱形 • 正型 • 有孔
PCBN Positive Inserts



标准型	锋利型	增强型
S0102510	S0101505	S0152520
Standard cutting edge	Sharp cutting edge	Strong cutting edge

Shape 图示	公制代码 ISO	Tip Shape 刀片结构	H				英制代码 ANSI	Tip Shape 刀片结构	Dimensions in mm 刀片参数				
			PNH0120	PNH1020	PNH2018	PNH3019			ic	Ød	s	r	la
	DCGW070202-1NS0102510	SLST22S	●	●	●	●	DCGW2(1.5)(0.5)-1NS0102510	SLST22S	6.35	2.8	2.38	0.2	2.2
	-1NS0101505		●	●	●	●	-1NS0101505						
	-1NS0152520		●	●	●	●	-1NS0152520						
	DCGW070204-1NS0102510		●	●	●	●	DCGW2(1.5)1-1NS0102510						
	-1NS0101505		●	●	●	●	-1NS0101505						
	-1NS0152520		●	●	●	●	-1NS0152520						
	DCGW070208-1NS0102510		●	●	●	●	DCGW2(1.5)2-1NS0102510						
	-1NS0101505		●	●	●	●	-1NS0101505						
	-1NS0152520		●	●	●	●	-1NS0152520						
	DCGW070202-2NS0102510		●	●	●	●	DCGW2(1.5)(0.5)-2NS0102510						
-2NS0101505	●	●	●	●	-2NS0101505								
-2NS0152520	●	●	●	●	-2NS0103505								
DCGW070204-2NS0102510	●	●	●	●	DCGW2(1.5)1-2NS0102510								
-2NS0101505	●	●	●	●	-2NS0101505								
-2NS0152520	●	●	●	●	-2NS0152520								
DCGW070208-2NS0102510	●	●	●	●	DCGW2(1.5)2-2NS0102510								
-2NS0101505	●	●	●	●	-2NS0101505								
-2NS0152520	●	●	●	●	-2NS0152520								

DC 55° 菱形 • 正型 • 有孔
PCBN Positive Inserts



标准型	锋利型	增强型
S0102510	S0101505	S0152520
Standard cutting edge	Sharp cutting edge	Strong cutting edge

Shape 图示	公制代码 ISO	Tip Shape 刀片结构	H				英制代码 ANSI	Tip Shape 刀片结构	Dimensions in mm 刀片参数				
			PNH0120	PNH1020	PNH2018	PNH3019			ic	Ød	s	r	la
	DCGW11T302-1NS0102510	SLST22S	●	●	●	●	DCGW3(2.5)(0.5)-1NS0102510	SLST22S	9.525	4.4	3.97	0.2	2.2
	-1NS0101505		●	●	●	●	-1NS0101505						
	-1NS0152520		●	●	●	●	-1NS0152520						
	DCGW11T304-1NS0102510		●	●	●	●	DCGW3(2.5)1-1NS0102510						
	-1NS0101505		●	●	●	●	-1NS0101505						
	-1NS0152520		●	●	●	●	-1NS0152520						
	DCGW11T308-1NS0102510		●	●	●	●	DCGW3(2.5)2-1NS0102510						
	-1NS0101505		●	●	●	●	-1NS0101505						
	-1NS0152520		●	●	●	●	-1NS0152520						
	DCGW11T312-1NS0102510		●	●	●	●	DCGW3(2.5)3-1NS0102510						
-1NS0101505	●	●	●	●	-1NS0101505								
-1NS0152520	●	●	●	●	-1NS0152520								
DCGW11T302-2NS0102510	●	●	●	●	DCGW3(2.5)(0.5)-2NS0102510								
-2NS0101505	●	●	●	●	-2NS0101505								
-2NS0152520	●	●	●	●	-2NS0152520								
DCGW11T304-2NS0102510	●	●	●	●	DCGW3(2.5)1-2NS0102510								
-2NS0101505	●	●	●	●	-2NS0101505								
-2NS0152520	●	●	●	●	-2NS0152520								
DCGW11T308-2NS0102510	●	●	●	●	DCGW3(2.5)2-2NS0102510								
-2NS0101505	●	●	●	●	-2NS0101505								
-2NS0152520	●	●	●	●	-2NS0152520								
DCGW11T312-2NS0102510	●	●	●	●	DCGW3(2.5)3-2NS0102510								
-2NS0101505	●	●	●	●	-2NS0101505								
-2NS0152520	●	●	●	●	-2NS0152520								

示例 (Example) : 公制 ISO: DCGW11T308-2NS0102510SLST22S PNH1020
英制 ANSI: DCGW3(2.5)2-2NS0102510SLST22S PNH1020



常规迷你型刀片

Mini Tipped PCBN Inserts

编码细则请参考B01-B02页

The rule of insert code please refer to page B01-B02

TP 60° 三角形 • 正型 • 有孔
PCBN Positive Inserts



标准型	锋利型	增强型
S0102510	S0101505	S0152520
Standard cutting edge	Sharp cutting edge	Strong cutting edge

Shape 图示	公制代码 ISO	Tip Shape 刀片结构	H				英制代码 ANSI	Tip Shape 刀片结构	Dimensions in mm 刀片参数				
			PNH0120	PNH1020	PNH2018	PNH3019			ic	Ød	s	r	la
	TPGW080202-1NS0102510	SLST22S	●	●	●	●	TPGW(1.5)(1.5)(0.5)-1NS0102510	SLST22S	4.76	2.4	2.38	0.2	2.2
	-1NS0101505		●	●		●	-1NS0101505						
	-1NS0152520			●	●		-1NS0152520						
	TPGW080204-1NS0102510		●	●	●	●	TPGW(1.5)(1.5)1-1NS0102510						
	-1NS0101505		●	●		●	-1NS0101505						
	-1NS0152520			●	●		-1NS0152520						
	TPGW080202-3NS0102510	SLST22S	●	●	●	●	TPGW(1.5)(1.5)(0.5)-3NS0102510	SLST22S	4.76	2.4	2.38	0.2	2.2
	-3NS0101505		●	●		●	-3NS0101505						
	-3NS0152520			●	●		-3NS0152520						
	TPGW080204-3NS0102510		●	●	●	●	TPGW(1.5)(1.5)1-3NS0102510						
	-3NS0101505		●	●		●	-3NS0101505						
	-3NS0152520			●	●		-3NS0152520						

TP 60° 三角形 • 正型 • 有孔
PCBN Positive Inserts



标准型	锋利型	增强型
S0102510	S0101505	S0152520
Standard cutting edge	Sharp cutting edge	Strong cutting edge

Shape 图示	公制代码 ISO	Tip Shape 刀片结构	H				英制代码 ANSI	Tip Shape 刀片结构	Dimensions in mm 刀片参数				
			PNH0120	PNH1020	PNH2018	PNH3019			ic	Ød	s	r	la
	TPGW090202-1NS0102510	SLST22S	●	●	●	●	TPGW(1.8)(1.5)(0.5)-1NS0102510	SLST22S	5.56	2.5	2.38	0.2	2.2
	-1NS0101505		●	●		●	-1NS0101505						
	-1NS0152520			●	●		-1NS0152520						
	TPGW090204-1NS0102510		●	●	●	●	TPGW(1.8)(1.5)1-1NS0102510						
	-1NS0101505		●	●		●	-1NS0101505						
	-1NS0152520			●	●		-1NS0152520						
	TPGW090208-1NS0102510	SLST22S	●	●	●	●	TPGW(1.8)(1.5)2-1NS0102510	SLST22S	5.56	2.5	2.38	0.8	2.2
	-1NS0101505		●	●		●	-1NS0101505						
	-1NS0152520			●	●		-1NS0152520						
	TPGW090202-3NS0102510		●	●	●	●	TPGW(1.8)(1.5)(0.5)-3NS0102510						
	-3NS0101505		●	●		●	-3NS0101505						
	-3NS0152520			●	●		-3NS0152520						
	TPGW090204-3NS0102510	SLST22S	●	●	●	●	TPGW(1.8)(1.5)1-3NS0102510	SLST22S	5.56	2.5	2.38	0.4	2.2
	-3NS0101505		●	●		●	-3NS0101505						
	-3NS0152520			●	●		-3NS0152520						
	TPGW090208-3NS0102510		●	●	●	●	TPGW(1.8)(1.5)2-3NS0102510						
	-3NS0101505		●	●		●	-3NS0101505						
	-3NS0152520			●	●		-3NS0152520						

示例 (Example) : 公制 ISO: TPGW090208-3NS0102510SLST22S PNH1020
英制 ANSI: TPGW(1.8)(1.5)2-3NS0102510SLST22S PNH1020

常规迷你型刀片

Mini Tipped PCBN Inserts

编码细则请参考B01-B02页

The rule of insert code please refer to page B01-B02

TP 60° 三角形 • 正型 • 有孔
PCBN Positive Inserts



标准型	锋利型	增强型
S0102510	S0101505	S0152520
Standard cutting edge	Sharp cutting edge	Strong cutting edge

Shape 图示	公制代码 ISO	Tip Shape 刀片结构	H			英制代码 ANSI	Tip Shape 刀片结构	Dimensions in mm 刀片参数				
			PNH1020	PNH2018	PNH3019			ic	Ød	s	r	la
	TPGW160402-1NS0102510	SLST22S	●	●	●	TPGW33(0.5)-1NS0102510	SLST22S	9.525	4.4	4.76	0.2	2.2
	-1NS0101505		●	●	●	-1NS0101505						
	-1NS0152520		●	●	●	-1NS0152520						
	TPGW160404-1NS0102510		●	●	●	TPGW331-1NS0102510						
	-1NS0101505		●	●	●	-1NS0101505						
	-1NS0152520		●	●	●	-1NS0152520						
	TPGW160408-1NS0102510		●	●	●	TPGW332-1NS0102510						
	-1NS0101505		●	●	●	-1NS0101505						
	-1NS0152520		●	●	●	-1NS0152520						
	TPGW160402-3NS0102510	SLST22S	●	●	●	TPGW33(0.5)-3NS0102510	SLST22S	9.525	4.4	4.76	0.2	2.2
	-3NS0101505		●	●	●	-3NS0101505						
	-3NS0152520		●	●	●	-3NS0152520						
	TPGW160404-3NS0102510		●	●	●	TPGW331-3NS0102510						
	-3NS0101505		●	●	●	-3NS0101505						
	-3NS0152520		●	●	●	-3NS0152520						
	TPGW160408-3NS0102510		●	●	●	TPGW332-3NS0102510						
	-3NS0101505		●	●	●	-3NS0101505						
	-3NS0152520		●	●	●	-3NS0152520						

示例 (Example) : 公制 ISO: TPGW160408-3NS0102510SLST22S PNH1020
英制 ANSI: TPGW332-3NS0102510SLST22S PNH1020

常规迷你型刀片

Mini Tipped PCBN Inserts

TP

60° 三角形 • 正型 • 有孔

PCBN Positive Inserts



标准型	锋利型	增强型
S0102510	S0101505	S0152520
Standard cutting edge	Sharp cutting edge	Strong cutting edge

Shape 图示	公制代码 ISO	Tip Shape 刀片结构	H				英制代码 ANSI	Tip Shape 刀片结构	Dimensions in mm 刀片参数				
			PNH0120	PNH1020	PNH2018	PNH3019			ic	Ød	s	r	la
	TPGW110302-1NS0102510	SLST22S	●	●	●	●	TPGW22(0.5)-1NS0102510	SLST22S	6.35	2.8	3.18	0.2	2.2
	-1NS0101505		●	●	●	●	-1NS0101505						
	-1NS0152520		●	●	●	●	-1NS0152520						
	TPGW110304-1NS0102510		●	●	●	●	TPGW221-1NS0102510						
	-1NS0101505		●	●	●	●	-1NS0101505						
	-1NS0152520		●	●	●	●	-1NS0152520						
	TPGW110302-3NS0102510	SLST22S	●	●	●	●	TPGW22(0.5)-3NS0102510	SLST22S	6.35	2.8	3.18	0.2	2.2
	-3NS0101505		●	●	●	●	-3NS0101505						
	-3NS0152520		●	●	●	●	-3NS0152520						
	TPGW110304-3NS0102510		●	●	●	●	TPGW221-3NS0102510						
	-3NS0101505		●	●	●	●	-3NS0101505						
	-3NS0152520		●	●	●	●	-3NS0152520						

TP

60° 三角形 • 正型 • 有孔

PCBN Positive Inserts



标准型	锋利型	增强型
S0102510	S0101505	S0152520
Standard cutting edge	Sharp cutting edge	Strong cutting edge

Shape 图示	公制代码 ISO	Tip Shape 刀片结构	H				英制代码 ANSI	Tip Shape 刀片结构	Dimensions in mm 刀片参数				
			PNH0120	PNH1020	PNH2018	PNH3019			ic	Ød	s	r	la
	TPGW160302-1NS0102510	SLST22S	●	●	●	●	TPGW32(0.5)-1NS0102510	SLST22S	9.525	4.4	3.18	0.2	2.2
	-1NS0101505		●	●	●	●	-1NS0101505						
	-1NS0152520		●	●	●	●	-1NS0152520						
	TPGW160304-1NS0102510		●	●	●	●	TPGW321-1NS0102510						
	-1NS0101505		●	●	●	●	-1NS0101505						
	-1NS0152520		●	●	●	●	-1NS0152520						
	TPGW160308-1NS0102510	SLST22S	●	●	●	●	TPGW322-1NS0102510	SLST22S	9.525	4.4	3.18	0.8	2.2
	-1NS0101505		●	●	●	●	-1NS0101505						
	-1NS0152520		●	●	●	●	-1NS0152520						
	TPGW160302-3NS0102510		●	●	●	●	TPGW32(0.5)-3NS0102510						
	-3NS0101505		●	●	●	●	-3NS0101505						
	-3NS0152520		●	●	●	●	-3NS0152520						
	TPGW160304-3NS0102510	SLST22S	●	●	●	●	TPGW321-3NS0102510	SLST22S	9.525	4.4	3.18	0.4	2.2
	-3NS0101505		●	●	●	●	-3NS0101505						
	-3NS0152520		●	●	●	●	-3NS0152520						
	TPGW160308-3NS0102510		●	●	●	●	TPGW322-3NS0102510						
	-3NS0101505		●	●	●	●	-3NS0101505						
	-3NS0152520		●	●	●	●	-3NS0152520						

示例 (Example) : 公制 ISO: TPGW160308-3NS0102510SLST22S PNH1020
英制 ANSI: TPGW322-3NS0102510SLST22S PNH1020

常规迷你型刀片

Mini Tipped PCBN Inserts

VB

35° 菱形 • 正型 • 有孔

PCBN Positive Inserts



标准型	锋利型	增强型
S0102510	S0101505	S0152520
Standard cutting edge	Sharp cutting edge	Strong cutting edge

Shape 图示	公制代码 ISO	Tip Shape 刀片结构	H				英制代码 ANSI	Tip Shape 刀片结构	Dimensions in mm 刀片参数				
			PNH0120	PNH1020	PNH2018	PNH3019			ic	Ød	s	r	la
	VBGW110302-1NS0102510	SLST22S	●	●	●	●	VBGW22(0.5)-1NS0102510	SLST22S	6.35	2.8	3.18	0.2	2.2
	-1NS0101505		●	●	●	●	-1NS0101505						
	-1NS0152520		●	●	●	●	-1NS0152520						
	VBGW110304-1NS0102510		●	●	●	●	VBGW221-1NS0102510						
	-1NS0101505		●	●	●	●	-1NS0101505						
	-1NS0152520		●	●	●	●	-1NS0152520						
	VBGW110308-1NS0102510		●	●	●	●	VBGW222-1NS0102510						
	-1NS0101505		●	●	●	●	-1NS0101505						
	-1NS0152520		●	●	●	●	-1NS0152520						
	VBGW110302-2NS0102510	SLST22S	●	●	●	●	VBGW22(0.5)-2NS0102510	SLST22S	6.35	2.8	3.18	0.2	2.2
	-2NS0101505		●	●	●	●	-2NS0101505						
	-2NS0152520		●	●	●	●	-2NS0152520						
	VBGW110304-2NS0102510		●	●	●	●	VBGW221-2NS0102510						
	-2NS0101505		●	●	●	●	-2NS0101505						
	-2NS0152520		●	●	●	●	-2NS0152520						
	VBGW110308-2NS0102510		●	●	●	●	VBGW222-2NS0102510						
	-2NS0101505		●	●	●	●	-2NS0101505						
	-2NS0152520		●	●	●	●	-2NS0152520						

VB

35° 菱形 • 正型 • 有孔

PCBN Positive Inserts



标准型	锋利型	增强型
S0102510	S0101505	S0152520
Standard cutting edge	Sharp cutting edge	Strong cutting edge

Shape 图示	公制代码 ISO	Tip Shape 刀片结构	H				英制代码 ANSI	Tip Shape 刀片结构	Dimensions in mm 刀片参数				
			PNH0120	PNH1020	PNH2018	PNH3019			ic	Ød	s	r	la
	VBGW160402-1NS0102510	SLST22S	●	●	●	●	VBGW33(0.5)-1NS0102510	SLST22S	9.525	4.4	4.76	0.2	2.2
	-1NS0101505		●	●	●	●	-1NS0101505						
	-1NS0152520		●	●	●	●	-1NS0152520						
	VBGW160404-1NS0102510		●	●	●	●	VBGW331-1NS0102510						
	-1NS0101505		●	●	●	●	-1NS0101505						
	-1NS0152520		●	●	●	●	-1NS0152520						
	VBGW160408-1NS0102510		●	●	●	●	VBGW332-1NS0102510						
	-1NS0101505		●	●	●	●	-1NS0101505						
	-1NS0152520		●	●	●	●	-1NS0152520						
	VBGW160402-2NS0102510	SLST22S	●	●	●	●	VBGW33(0.5)-2NS0102510	SLST22S	9.525	4.4	4.76	0.2	2.2
	-2NS0101505		●	●	●	●	-2NS0101505						
	-2NS0152520		●	●	●	●	-2NS0152520						
	VBGW160404-2NS0102510		●	●	●	●	VBGW331-2NS0102510						
	-2NS0101505		●	●	●	●	-2NS0101505						
	-2NS0152520		●	●	●	●	-2NS0152520						
	VBGW160408-2NS0102510		●	●	●	●	VBGW332-2NS0102510						
	-2NS0101505		●	●	●	●	-2NS0101505						
	-2NS0152520		●	●	●	●	-2NS0152520						
VBGW160412-1NS0102510	●	●	●	●	VBGW333-4NS0102510								
-1NS0101505	●	●	●	●	-4NS0101505								
-1NS0152520	●	●	●	●	-4NS0152520								

示例 (Example) : 公制 ISO: VBGW160408-2NS0102510SLST22S PNH1020

英制 ANSI: VBGW332-2NS0102510SLST22S PNH1020

常规迷你型刀片

Mini Tipped PCBN Inserts

编码细则请参考B01-B02页

The rule of insert code please refer to page B01-B02

VC 35° 菱形 • 正型 • 有孔
PCBN Positive Inserts



标准型	锋利型	增强型
S0102510	S0101505	S0152520
Standard cutting edge	Sharp cutting edge	Strong cutting edge

Shape 图示	公制代码 ISO	Tip Shape 刀片结构	H				英制代码 ANSI	Tip Shape 刀片结构	Dimensions in mm 刀片参数				
			PNH0120	PNH1020	PNH2018	PNH3019			ic	Ød	s	r	la
	VCGW080202-1NS0102510	SLST22S	●	●	●	●	VCGW(1.5)(1.5)(0.5)-1NS0102510	SLST22S	6.35	2.3	2.38	0.2	2.2
	-1NS0101505		●	●	●	●	-1NS0101505						
	-1NS0152520		●	●	●	●	-1NS0152520						
	VCGW080204-1NS0102510		●	●	●	●	VCGW(1.5)(1.5)1-1NS0102510						
	-1NS0101505		●	●	●	●	-1NS0101505						
	-1NS0152520		●	●	●	●	-1NS0152520						
	VCGW080208-1NS0102510		●	●	●	●	VCGW(1.5)(1.5)2-1NS0102510						
	-1NS0101505		●	●	●	●	-1NS0101505						
	-1NS0152520		●	●	●	●	-1NS0152520						
	VCGW080202-2NS0102510	SLST22S	●	●	●	●	VCGW(1.5)(1.5)(0.5)-2NS0102510	SLST22S	6.35	2.3	2.38	0.2	2.2
	-2NS0101505		●	●	●	●	-2NS0101505						
	-2NS0152520		●	●	●	●	-2NS0152520						
	VCGW080204-2NS0102510		●	●	●	●	VCGW(1.5)(1.5)1-2NS0102510						
	-2NS0101505		●	●	●	●	-2NS0101505						
	-2NS0152520		●	●	●	●	-2NS0152520						
	VCGW080208-2NS0102510		●	●	●	●	VCGW(1.5)(1.5)2-2NS0102510						
	-2NS0101505		●	●	●	●	-2NS0101505						
	-2NS0152520		●	●	●	●	-2NS0152520						

VC 35° 菱形 • 正型 • 有孔
PCBN Positive Inserts



标准型	锋利型	增强型
S0102510	S0101505	S0152520
Standard cutting edge	Sharp cutting edge	Strong cutting edge

Shape 图示	公制代码 ISO	Tip Shape 刀片结构	H				英制代码 ANSI	Tip Shape 刀片结构	Dimensions in mm 刀片参数				
			PNH0120	PNH1020	PNH2018	PNH3019			ic	Ød	s	r	la
	VCGW110302-1NS0102510	SLST22S	●	●	●	●	VCGW22(0.5)-1NS0102510	SLST22S	6.35	2.8	3.18	0.2	2.2
	-1NS0101505		●	●	●	●	-1NS0101505						
	-1NS0152520		●	●	●	●	-1NS0152520						
	VCGW110304-1NS0102510		●	●	●	●	VCGW221-1NS0102510						
	-1NS0101505		●	●	●	●	-1NS0101505						
	-1NS0152520		●	●	●	●	-1NS0152520						
	VCGW110308-1NS0102510		●	●	●	●	VCGW222-1NS0102510						
	-1NS0101505		●	●	●	●	-1NS0101505						
	-1NS0152520		●	●	●	●	-1NS0152520						
	VCGW110302-2NS0102510	SLST22S	●	●	●	●	VCGW22(0.5)-2NS0102510	SLST22S	6.35	2.8	3.18	0.2	2.2
	-2NS0101505		●	●	●	●	-2NS0101505						
	-2NS0152520		●	●	●	●	-2NS0152520						
	VCGW110304-2NS0102510		●	●	●	●	VCGW221-2NS0102510						
	-2NS0101505		●	●	●	●	-2NS0101505						
	-2NS0152520		●	●	●	●	-2NS0152520						
	VCGW110308-2NS0102510		●	●	●	●	VCGW222-2NS0102510						
	-2NS0101505		●	●	●	●	-2NS0101505						
	-2NS0152520		●	●	●	●	-2NS0152520						

示例 (Example) : 公制 ISO: VCGW110308-2NS0102510SLST22S PNH1020

英制 ANSI: VCGW222-2NS0102510SLST22S PNH1020

常规迷你型刀片

Mini Tipped PCBN Inserts

VC

35° 菱形 • 正型 • 有孔

PCBN Positive Inserts



标准型	锋利型	增强型
S0102510	S0101505	S0152520
Standard cutting edge	Sharp cutting edge	Strong cutting edge

Shape 图示	公制代码 ISO	Tip Shape 刀片结构	H				英制代码 ANSI	Tip Shape 刀片结构	Dimensions in mm 刀片参数				
			PNH0120	PNH1020	PNH2018	PNH3019			ic	Ød	s	r	la
	VCGW160402-1NS0102510	SLST22S	●	●	●	●	VCGW33(0.5)-1NS0102510	SLST22S	9.525	4.4	4.76	0.2	2.2
	-1NS0101505		●	●	●	●	-1NS0101505						
	-1NS0152520		●	●	●	●	-1NS0152520						
	VCGW160404-1NS0102510		●	●	●	●	VCGW331-1NS0102510						
	-1NS0101505		●	●	●	●	-1NS0101505						
	-1NS0152520		●	●	●	●	-1NS0152520						
	VCGW160408-1NS0102510		●	●	●	●	VCGW332-1NS0102510						
	-1NS0101505		●	●	●	●	-1NS0101505						
	-1NS0152520		●	●	●	●	-1NS0152520						
	VCGW160402-2NS0102510	SLST22S	●	●	●	●	VCGW33(0.5)-2NS0102510	SLST22S	9.525	4.4	4.76	0.2	2.2
	-2NS0101505		●	●	●	●	-2NS0101505						
	-2NS0152520		●	●	●	●	-2NS0152520						
	VCGW160404-2NS0102510		●	●	●	●	VCGW331-2NS0102510						
	-2NS0101505		●	●	●	●	-2NS0101505						
	-2NS0152520		●	●	●	●	-2NS0152520						
	VCGW160408-2NS0102510		●	●	●	●	VCGW332-2NS0102510						
	-2NS0101505		●	●	●	●	-2NS0101505						
	-2NS0152520		●	●	●	●	-2NS0152520						

示例 (Example) : 公制 ISO: VCGW160408-2NS0102510SLST22S PNH1020
 英制 ANSI: VCGW332-2NS0102510SLST22S PNH1020



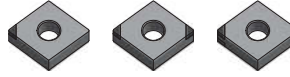
常规迷你型刀片

Mini Tipped PCBN Inserts

编码细则请参考B01-B02页

The rule of insert code please refer to page B01-B02

CN 80° 菱形 • 负型 • 有孔
PCBN Negative Inserts



标准型	锋利型	增强型
S0102510	S0101505	S0152520
Standard cutting edge	Sharp cutting edge	Strong cutting edge

Shape 图示	公制代码 ISO	Tip Shape 刀片结构	H				英制代码 ANSI	Tip Shape 刀片结构	Dimensions in mm 刀片参数				
			PNH0120	PNH1020	PNH2018	PNH3019			ic	d	s	r	la
	CNGA 120402-1NS0 1025 10	SLST22S	●	●	●	●	CNGA43(0.5)-1NS0 1025 10	SLST22S	12.7	5.16	4.76	2.2	0.2
	-1NS0 101505		●	●	●	●	-1NS0 101505						0.4
	-1NS0 152520		●	●	●	●	-1NS0 152520						0.8
	CNGA 120404-1NS0 1025 10		●	●	●	●	CNGA431-1NS0 1025 10						1.2
	-1NS0 101505		●	●	●	●	-1NS0 101505						
	-1NS0 152520		●	●	●	●	-1NS0 152520						
	CNGA 120408-1NS0 1025 10		●	●	●	●	CNGA432-1NS0 1025 10						
	-1NS0 101505		●	●	●	●	-1NS0 101505						
	-1NS0 152520		●	●	●	●	-1NS0 152520						
	CNGA 120412-1NS0 1025 10		●	●	●	●	CNGA433-1NS0 1025 10						
	-1NS0 101505		●	●	●	●	-1NS0 101505						
	-1NS0 152520		●	●	●	●	-1NS0 152520						
	CNGA 120402-2NS0 1025 10	SLST22S	●	●	●	●	CNGA43(0.5)-2NS0 1025 10	SLST22S	12.7	5.16	4.76	2.2	0.2
	-2NS0 101505		●	●	●	●	-2NS0 101505						0.4
	-2NS0 152520		●	●	●	●	-2NS0 152520						0.8
	CNGA 120404-2NS0 1025 10		●	●	●	●	CNGA431-2NS0 1025 10						1.2
	-2NS0 101505		●	●	●	●	-2NS0 101505						
	-2NS0 152520		●	●	●	●	-2NS0 152520						
	CNGA 120408-2NS0 1025 10		●	●	●	●	CNGA432-2NS0 1025 10						
	-2NS0 101505		●	●	●	●	-2NS0 101505						
	-2NS0 152520		●	●	●	●	-2NS0 152520						
	CNGA 120412-2NS0 1025 10		●	●	●	●	CNGA433-2NS0 1025 10						
	-2NS0 101505		●	●	●	●	-2NS0 101505						
	-2NS0 152520		●	●	●	●	-2NS0 152520						
	CNGA 120402-4NS0 1025 10	SLST22S	●	●	●	●	CNGA43(0.5)-4NS0 1025 10	SLST22S	12.7	5.16	4.76	2.2	0.2
	-4NS0 101505		●	●	●	●	-4NS0 101505						0.4
	-4NS0 152520		●	●	●	●	-4NS0 152520						0.8
	CNGA 120404-4NS0 1025 10		●	●	●	●	CNGA431-4NS0 1025 10						1.2
	-4NS0 101505		●	●	●	●	-4NS0 101505						
	-4NS0 152520		●	●	●	●	-4NS0 152520						
	CNGA 120408-4NS0 1025 10		●	●	●	●	CNGA432-4NS0 1025 10						
	-4NS0 101505		●	●	●	●	-4NS0 101505						
	-4NS0 152520		●	●	●	●	-4NS0 152520						
	CNGA 120412-4NS0 1025 10		●	●	●	●	CNGA433-4NS0 1025 10						
	-4NS0 101505		●	●	●	●	-4NS0 101505						
	-4NS0 152520		●	●	●	●	-4NS0 152520						

示例 (Example) : 公制 ISO: CNGA 120408-4NS0 1025 10SLST22S PNH1020
英制 ANSI: CNGA432-4NS0 1025 10SLST22S PNH1020

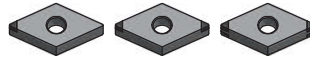
常规迷你型刀片

Mini Tipped PCBN Inserts

DN

55° 菱形 • 负型 • 有孔

PCBN Negative Inserts



标准型	锋利型	增强型
S0102510	S0101505	S0152520
Standard cutting edge	Sharp cutting edge	Strong cutting edge

Shape 图示	公制代码 ISO	Tip Shape 刀片结构	H				英制代码 ANSI	Tip Shape 刀片结构	Dimensions in mm 刀片参数				
			PNH1020	PNH1020	PNH2018	PNH3019			ic	Ød	s	r	la
	DNGA 150402-1NS0102510	SLST22S	●	●	●	●	DNGA43(0.5)-1NS0102510	SLST22S	12.7	5.16	4.76	2.2	0.2
	-1NS0101505		●	●	●	●	-1NS0101505						0.4
	-1NS0152520		●	●	●	●	-1NS0152520						0.8
	DNGA 150404-1NS0102510		●	●	●	●	DNGA431-1NS0102510						1.2
	-1NS0101505		●	●	●	●	-1NS0101505						
	-1NS0152520		●	●	●	●	-1NS0152520						
	DNGA 150408-1NS0102510		●	●	●	●	DNGA432-1NS0102510						
	-1NS0101505		●	●	●	●	-1NS0101505						
	-1NS0152520		●	●	●	●	-1NS0152520						
	DNGA 150412-1NS0102510		●	●	●	●	DNGA433-1NS0102510						
	-1NS0101505		●	●	●	●	-1NS0101505						
	-1NS0152520		●	●	●	●	-1NS0152520						
	DNGA 150402-2NS0102510	SLST22S	●	●	●	●	DNGA43(0.5)-2NS0102510	SLST22S	12.7	5.16	4.76	2.2	0.2
	-2NS0101505		●	●	●	●	-2NS0101505						0.4
	-2NS0152520		●	●	●	●	-2NS0152520						0.8
	DNGA 150404-2NS0102510		●	●	●	●	DNGA431-2NS0102510						1.2
	-2NS0101505		●	●	●	●	-2NS0101505						
	-2NS0152520		●	●	●	●	-2NS0152520						
	DNGA 150408-2NS0102510		●	●	●	●	DNGA432-2NS0102510						
	-2NS0101505		●	●	●	●	-2NS0101505						
	-2NS0152520		●	●	●	●	-2NS0152520						
	DNGA 150412-2NS0102510		●	●	●	●	DNGA433-2NS0102510						
	-2NS0101505		●	●	●	●	-2NS0101505						
	-2NS0152520		●	●	●	●	-2NS0152520						
	DNGA 150402-4NS0102510	SLST22S	●	●	●	●	DNGA43(0.5)-4NS0102510	SLST22S	12.7	5.16	4.76	2.2	0.2
	-4NS0101505		●	●	●	●	-4NS0101505						0.4
	-4NS0152520		●	●	●	●	-4NS0152520						0.8
	DNGA 150404-4NS0102510		●	●	●	●	DNGA431-4NS0102510						1.2
	-4NS0101505		●	●	●	●	-4NS0101505						
	-4NS0152520		●	●	●	●	-4NS0152520						
	DNGA 150408-4NS0102510		●	●	●	●	DNGA432-4NS0102510						
	-4NS0101505		●	●	●	●	-4NS0101505						
	-4NS0152520		●	●	●	●	-4NS0152520						
	DNGA 150412-4NS0102510		●	●	●	●	DNGA433-4NS0102510						
	-4NS0101505		●	●	●	●	-4NS0101505						
	-4NS0152520		●	●	●	●	-4NS0152520						

示例 (Example) : 公制 ISO: DNGA 150408-4NS0102510SLST22S PNH1020
 英制 ANSI: DNGA432-4NS0102510SLST22S PNH1020



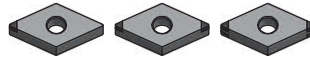
常规迷你型刀片

Mini Tipped PCBN Inserts

编码细则请参考B01-B02页

The rule of insert code please refer to page B01-B02

DN 55° 菱形 • 负型 • 有孔
PCBN Negative Inserts



标准型	锋利型	增强型
S0102501	S0101505	S0152520
Standard cutting edge	Sharp cutting edge	Strong cutting edge

Shape 图示	公制代码 ISO	Tip Shape 刀片结构	H				英制代码 ANSI	Tip Shape 刀片结构	Dimensions in mm 刀片参数				
			PNH1020	PNH1020	PNH2018	PNH3019			ic	ød	s	r	la
	DNGA 150602-1NS0102510	SLST22S	●	●	●	●	DNGA44(0.5)-1NS0102510	SLST22S	12.7	5.16	6.35	2.2	0.2
	-1NS0101505		●	●	●	●	-1NS0101505						0.4
	-1NS0152520		●	●	●	●	-1NS0152520						0.8
	DNGA 150604-1NS0102510		●	●	●	●	DNGA441-1NS0102510						1.2
	-1NS0101505		●	●	●	●	-1NS0101505						
	-1NS0152520		●	●	●	●	-1NS0152520						
	DNGA 150608-1NS0102510		●	●	●	●	DNGA442-1NS0102510						
	-1NS0101505		●	●	●	●	-1NS0101505						
	-1NS0152520		●	●	●	●	-1NS0152520						
	DNGA 150612-1NS0102510		●	●	●	●	DNGA443-1NS0102510						
	-1NS0101505		●	●	●	●	-1NS0101505						
	-1NS0152520		●	●	●	●	-1NS0152520						
	DNGA 150602-2NS0102510	SLST22S	●	●	●	●	DNGA44(0.5)-2NS0102510	SLST22S	12.7	5.16	6.35	2.2	0.2
	-2NS0101505		●	●	●	●	-2NS0101505						0.4
	-2NS0152520		●	●	●	●	-2NS0152520						0.8
	DNGA 150604-2NS0102510		●	●	●	●	DNGA441-2NS0102510						1.2
	-2NS0101505		●	●	●	●	-2NS0101505						
	-2NS0152520		●	●	●	●	-2NS0152520						
	DNGA 150608-2NS0102510		●	●	●	●	DNGA442-2NS0102510						
	-2NS0101505		●	●	●	●	-2NS0101505						
	-2NS0152520		●	●	●	●	-2NS0152520						
	DNGA 150612-2NS0102510		●	●	●	●	DNGA443-2NS0102510						
	-2NS0101505		●	●	●	●	-2NS0101505						
	-2NS0152520		●	●	●	●	-2NS0152520						
	DNGA 150602-4NS0102510	SLST22S	●	●	●	●	DNGA44(0.5)-4NS0102510	SLST22S	12.7	5.16	6.35	2.2	0.2
	-4NS0101505		●	●	●	●	-4NS0101505						0.4
	-4NS0152520		●	●	●	●	-4NS0152520						0.8
	DNGA 150604-4NS0102510		●	●	●	●	DNGA441-4NS0102510						1.2
	-4NS0101505		●	●	●	●	-4NS0101505						
	-4NS0152520		●	●	●	●	-4NS0152520						
	DNGA 150608-4NS0102510		●	●	●	●	DNGA442-4NS0102510						
	-4NS0101505		●	●	●	●	-4NS0101505						
	-4NS0152520		●	●	●	●	-4NS0152520						
	DNGA 150612-4NS0102510		●	●	●	●	DNGA443-4NS0102510						
	-4NS0101505		●	●	●	●	-4NS0101505						
	-4NS0152520		●	●	●	●	-4NS0152520						

示例 (Example) : 公制 ISO: DNGA 150608-4NS0102510SLST22S PNH1020
英制 ANSI: DNGA442-4NS0102510SLST22S PNH1020

常规迷你型刀片

Mini Tipped PCBN Inserts

编码细则请参考B01-B02页

The rule of insert code please refer to page B01-B02

TN 60° 三角形 • 负型 • 有孔
PCBN Negative Inserts



标准型	锋利型	增强型
S0102510	S0101505	S0152520
Standard cutting edge	Sharp cutting edge	Strong cutting edge

Shape 图示	公制代码 ISO	Tip Shape 刀片结构	H				英制代码 ANSI	Tip Shape 刀片结构	Dimensions in mm 刀片参数				
			PNH0120	PNH1020	PNH2018	PNH3019			ic	Ød	s	r	la
	TNGA 160402-1NS0102510	SLST22S	●	●	●	●	TNGA33(0.5)-1NS0102510	SLST22S	9.525	3.81	4.76	2.2	0.2
	-1NS0101505		●	●	●	●	-1NS0101505						0.4
	-1NS0152520		●	●	●	●	-1NS0152520						0.8
	TNGA 160404-1NS0102510		●	●	●	●	TNGA331-1NS0102510						1.2
	-1NS0101505		●	●	●	●	-1NS0101505						
	-1NS0152520		●	●	●	●	-1NS0152520						
	TNGA 160408-1NS0102510		●	●	●	●	TNGA332-1NS0102510						
	-1NS0101505		●	●	●	●	-1NS0101505						
	-1NS0152520		●	●	●	●	-1NS0152520						
	TNGA 160402-3NS0102510	SLST22S	●	●	●	●	TNGA33(0.5)-3NS0102510	SLST22S	9.525	3.81	4.76	2.2	0.2
	-3NS0101505		●	●	●	●	-3NS0101505						0.4
	-3NS0152520		●	●	●	●	-3NS0152520						0.8
	TNGA 160404-3NS0102510		●	●	●	●	TNGA331-3NS0102510						1.2
	-3NS0101505		●	●	●	●	-3NS0101505						
	-3NS0152520		●	●	●	●	-3NS0152520						
	TNGA 160408-3NS0102510		●	●	●	●	TNGA332-3NS0102510						
	-3NS0101505		●	●	●	●	-3NS0101505						
	-3NS0152520		●	●	●	●	-3NS0152520						
	TNGA 160402-6NS0102510	SLST22S	●	●	●	●	TNGA33(0.5)-6NS0102510	SLST22S	9.525	3.81	4.76	2.2	0.2
	-6NS0101505		●	●	●	●	-6NS0101505						0.4
	-6NS0152520		●	●	●	●	-6NS0152520						0.8
	TNGA 160404-6NS0102510		●	●	●	●	TNGA331-6NS0102510						1.2
	-6NS0101505		●	●	●	●	-6NS0101505						
	-6NS0152520		●	●	●	●	-6NS0152520						
	TNGA 160408-6NS0102510		●	●	●	●	TNGA332-6NS0102510						
	-6NS0101505		●	●	●	●	-6NS0101505						
	-6NS0152520		●	●	●	●	-6NS0152520						

示例 (Example) : 公制 ISO: TNGA 160408-6NS0102510SLST22S PNH1020
ANSI ANSI: TNGA332-6NS0102510SLST22S PNH1020

常规迷你型刀片

Mini Tipped PCBN Inserts

SN

90° 正方形 • 负型 • 有孔

PCBN Negative Inserts



标准型	锋利型	增强型
S0102510	S0101505	S0152520
Standard cutting edge	Sharp cutting edge	Strong cutting edge

Shape 图示	公制代码 ISO	Tip Shape 刀片结构	H				英制代码 ANSI	Tip Shape 刀片结构	Dimensions in mm 刀片参数				
			PNH1020	PNH1020	PNH2018	PNH3019			ic	Ød	s	r	la
	SNGA 120402-1NS0102510	SLST22S	●	●	●	●	SNGA43(0.5)-1NS0102510	SLST22S	12.7	5.16	4.76	2.2	0.2
	-1NS0101505		●	●	●	●	-1NS0101505						0.4
	-1NS0152520		●	●	●	●	-1NS0152520						0.8
	SNGA 120404-1NS0102510		●	●	●	●	SNGA431-1NS0102510						1.2
	-1NS0101505		●	●	●	●	-1NS0101505						
	-1NS0152520		●	●	●	●	-1NS0152520						
	SNGA 120408-1NS0102510		●	●	●	●	SNGA432-1NS0102510						
	-1NS0101505		●	●	●	●	-1NS0101505						
	-1NS0152520		●	●	●	●	-1NS0152520						
	SNGA 120412-1NS0102510		●	●	●	●	SNGA433-1NS0102510						
	-1NS0101505		●	●	●	●	-1NS0101505						
	-1NS0152520		●	●	●	●	-1NS0152520						
	SNGA 120402-4NS0102510	SLST22S	●	●	●	●	SNGA43(0.5)-4NS0102510	SLST22S	12.7	5.16	4.76	2.2	0.2
	-4NS0101505		●	●	●	●	-4NS0101505						0.4
	-4NS0152520		●	●	●	●	-4NS0152520						0.8
	SNGA 120404-4NS0102510		●	●	●	●	SNGA431-4NS0102510						1.2
	-4NS0101505		●	●	●	●	-4NS0101505						
	-4NS0152520		●	●	●	●	-4NS0152520						
	SNGA 120408-4NS0102510		●	●	●	●	SNGA432-4NS0102510						
	-4NS0101505		●	●	●	●	-4NS0101505						
	-4NS0152520		●	●	●	●	-4NS0152520						
	SNGA 120412-4NS0102510		●	●	●	●	SNGA433-4NS0102510						
	-4NS0101505		●	●	●	●	-4NS0101505						
	-4NS0152520		●	●	●	●	-4NS0152520						
	SNGA 120402-8NS0102510	SLST22S	●	●	●	●	SNGA43(0.5)-8NS0102510	SLST22S	12.7	5.16	4.76	2.2	0.2
	-8NS0101505		●	●	●	●	-8NS0101505						0.4
	-8NS0152520		●	●	●	●	-8NS0152520						0.8
	SNGA 120404-8NS0102510		●	●	●	●	SNGA431-8NS0102510						1.2
	-8NS0101505		●	●	●	●	-8NS0101505						
	-8NS0152520		●	●	●	●	-8NS0152520						
	SNGA 120408-8NS0102510		●	●	●	●	SNGA432-8NS0102510						
	-8NS0101505		●	●	●	●	-8NS0101505						
	-8NS0152520		●	●	●	●	-8NS0152520						
	SNGA 120412-8NS0102510		●	●	●	●	SNGA433-8NS0102510						
	-8NS0101505		●	●	●	●	-8NS0101505						
	-8NS0152520		●	●	●	●	-8NS0152520						

示例 (Example) : 公制 ISO: SNGA 120408-8NS0102510SLST22S PNH1020
英制 ANSI: SNGA432-8NS0102510SLST22S PNH1020



常规迷你型刀片

Mini Tipped PCBN Inserts

编码细则请参考B01-B02页

The rule of insert code please refer to page B01-B02

WN

80° 六边形 • 负型 • 有孔

PCBN Negative Inserts



标准型	锋利型	增强型
S0102510	S0101505	S0152520
Standard cutting edge	Sharp cutting edge	Strong cutting edge

Shape 图示	公制代码 ISO	Tip Shape 刀片结构	H				英制代码 ANSI	Tip Shape 刀片结构	Dimensions in mm 刀片参数				
			PNH0120	PNH1020	PNH2018	PNH3019			ic	∅d	s	r	la
	WNGA080402-1NS0102510	SLST22S	●	●	●	●	WNGA43(0.5)-1NS0102510	SLST22S	12.7	5.16	4.76	2.2	0.2
	-1NS0101505		●	●	●	●	-1NS0101505						0.4
	-1NS0152520		●	●	●	●	-1NS0152520						0.8
	WNGA080404-1NS0102510		●	●	●	●	WNGA431-1NS0102510						1.2
	-1NS0101505		●	●	●	●	-1NS0101505						
	-1NS0152520		●	●	●	●	-1NS0152520						
	WNGA080408-1NS0102510		●	●	●	●	WNGA432-1NS0102510						
	-1NS0101505		●	●	●	●	-1NS0101505						
	-1NS0152520		●	●	●	●	-1NS0152520						
	WNGA080412-1NS0102510		●	●	●	●	WNGA433-1NS0102510						
	-1NS0101505		●	●	●	●	-1NS0101505						
	-1NS0152520		●	●	●	●	-1NS0152520						
	WNGA080402-3NS0102510	SLST22S	●	●	●	●	WNGA43(0.5)-3NS0102510	SLST22S	12.7	5.16	4.76	2.2	0.2
	-3NS0101505		●	●	●	●	-3NS0101505						0.4
	-3NS0152520		●	●	●	●	-3NS0152520						0.8
	WNGA080404-3NS0102510		●	●	●	●	WNGA431-3NS0102510						1.2
	-3NS0101505		●	●	●	●	-3NS0101505						
	-3NS0152520		●	●	●	●	-3NS0152520						
	WNGA080408-3NS0102510		●	●	●	●	WNGA432-3NS0102510						
	-3NS0101505		●	●	●	●	-3NS0101505						
	-3NS0152520		●	●	●	●	-3NS0152520						
	WNGA080412-3NS0102510		●	●	●	●	WNGA433-3NS0102510						
	-3NS0101505		●	●	●	●	-3NS0101505						
	-3NS0152520		●	●	●	●	-3NS0152520						
	WNGA080402-6NS0102510	SLST22S	●	●	●	●	WNGA43(0.5)-6NS0102505	SLST22S	12.7	5.16	4.76	2.2	0.2
	-6NS0101505		●	●	●	●	-6NS0101505						0.4
	-6NS0152520		●	●	●	●	-6NS0152520						0.8
	WNGA080404-6NS0102510		●	●	●	●	WNGA431-6NS0102510						1.2
	-6NS0101505		●	●	●	●	-6NS0101505						
	-6NS0152520		●	●	●	●	-6NS0152520						
	WNGA080408-6NS0102510		●	●	●	●	WNGA432-6NS0102510						
	-6NS0101505		●	●	●	●	-6NS0101505						
	-6NS0152520		●	●	●	●	-6NS0152520						
	WNGA080412-6NS0102510		●	●	●	●	WNGA433-6NS0102510						
	-6NS0101505		●	●	●	●	-6NS0101505						
	-6NS0152520		●	●	●	●	-6NS0152520						

示例 (Example) : 公制 ISO: WNGA080408-6NS0102510SLST22S PNH1020
 英制 ANSI: WNGA432-6NS0102510SLST22S PNH1020

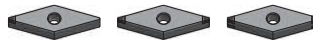
常规迷你型刀片

Mini Tipped PCBN Inserts

VN

35° 菱形 • 负型 • 有孔

PCBN Negative Inserts



标准型	锋利型	增强型
S0102510	S0101505	S0152520
Standard cutting edge	Sharp cutting edge	Strong cutting edge

Shape 图示	公制代码 ISO	Tip Shape 刀片结构	H				英制代码 ANSI	Tip Shape 刀片结构	Dimensions in mm 刀片参数				
			PNH1020	PNH1020	PNH2018	PNH3019			ic	Ød	s	r	la
	VNGA 160402-1NS0102510	SLST22S	●	●	●	●	VNGA 33(0.5)-1NS0102510	SLST22S	9.525	3.81	4.76	0.2	2.2
	-1NS0101505		●	●	●	●	-1NS0101505						
	-1NS0152520		●	●	●	●	-1NS0152520						
	VNGA 160404-1NS0102510		●	●	●	●	VNGA 331-1NS0102510						
	-1NS0101505		●	●	●	●	-1NS0101505						
	-1NS0152520		●	●	●	●	-1NS0152520						
	VNGA 160408-1NS0102510		●	●	●	●	VNGA 332-1NS0102510						
	-1NS0101505		●	●	●	●	-1NS0101505						
	-1NS0152520		●	●	●	●	-1NS0152520						
VNGA 160412-1NS0102510	●	●	●	●	VNGA 333-1NS0102510								
-1NS0101505	●	●	●	●	-1NS0101505								
-1NS0152520	●	●	●	●	-1NS0152520								
	VNGA 160402-2NS0102510	SLST22S	●	●	●	●	VNGA 33(0.5)-2NS0102510	SLST22S	9.525	3.81	4.76	0.2	2.2
	-2NS0101505		●	●	●	●	-2NS0101505						
	-2NS0152520		●	●	●	●	-2NS0152520						
	VNGA 160404-2NS0102510		●	●	●	●	VNGA 331-2NS0102510						
	-2NS0101505		●	●	●	●	-2NS0101505						
	-2NS0152520		●	●	●	●	-2NS0152520						
	VNGA 160408-2NS0102510		●	●	●	●	VNGA 332-2NS0102510						
	-2NS0101505		●	●	●	●	-2NS0101505						
	-2NS0152520		●	●	●	●	-2NS0152520						
VNGA 160412-2NS0102510	●	●	●	●	VNGA 333-2NS0102510								
-2NS0101505	●	●	●	●	-2NS0101505								
-2NS0152520	●	●	●	●	-2NS0152520								
	VNGA 160402-4NS0102510	SLST22S	●	●	●	●	VNGA 33(0.5)-4NS0102510	SLST22S	9.525	3.81	4.76	0.2	2.2
	-4NS0101505		●	●	●	●	-4NS0101505						
	-4NS0152520		●	●	●	●	-4NS0152520						
	VNGA 160404-4NS0102510		●	●	●	●	VNGA 331-4NS0102510						
	-4NS0101505		●	●	●	●	-4NS0101505						
	-4NS0152520		●	●	●	●	-4NS0152520						
	VNGA 160408-4NS0102510		●	●	●	●	VNGA 332-4NS0102510						
	-4NS0101505		●	●	●	●	-4NS0101505						
	-4NS0152520		●	●	●	●	-4NS0152520						
VNGA 160412-4NS0102510	●	●	●	●	VNGA 333-4NS0102510								
-4NS0101505	●	●	●	●	-4NS0101505								
-4NS0152520	●	●	●	●	-4NS0152520								

示例 (Example) : 公制 ISO: VNGA 160408-4NS0102510SLST22S PNH1020
 英制 ANSI: VNGA332-4NS0102510SLST22S PNH1020



修光刃型刀片

Wiper PCBN Inserts



增加的修光刃能有效提高工件表面质量或提高加工效率；mini刀头的设计实现了成本的降低，切深亦可达（ $a_p=0.5\text{mm}$ ）

Wiper tip inserts can improve the surface finishing of workpiece, increase machining efficiency, mini tip inserts can reduce the cost of cutting tools. The max $a_p=0.5\text{mm}$.

订单批号的标识更方便质量跟踪和信息的反馈。
Clear Serial Number on carbide body makes it easily to track the inserts quality and the feedback information.

刀片PCBN材质的标识方便识别。
Clear mark of PCBN material makes it easily to recognize.

采用特种焊接工艺，焊接牢固！
Special brazing technology, firmly brazed.

所有刀尖序号的标识，更方便管理。
Clear numbers of tips make the inserts easily to management.

优质CBN材质、小刀尖，经济实用，性价比高。
Premium CBN materials, mini tip, less cost and better performance.

修光刃型刀片

Wiper PCBN Inserts

编码细则请参考B01-B02页

The rule of insert code please refer to page B01-B02

CC 80° 菱形 • 正型 • 有孔
PCBN Positive Inserts



标准型	锋利型	增强型
S0102510	S0101505	S0152520
Standard cutting edge	Sharp cutting edge	Strong cutting edge

Shape 图示	公制代码 ISO	Tip Shape 刀片结构	H				英制代码 ANSI	Tip Shape 刀片结构	Dimensions in mm 刀片参数				
			PNH1020	PNH1020	PNH2018	PNH3019			ic	Ød	s	r	la
												0.2	
	CCGW09T304-2NS0 1025 10	SLWGR22S	●	●	●	●	CCGW3(2.5)1-2NS0 1025 10	SLWGR22S	9.525	4.4	3.97	0.2	2.2
	-2NS0 101505		●	●	●	●	-2NS0 101505					0.4	
	-2NS0 152520		●	●	●	●	-2NS0 152520					0.8	
	CCGW09T308-2NS0 1025 10		●	●	●	●	CCGW3(2.5)2-2NS0 1025 10					0.2	
	-2NS0 101505		●	●	●	●	-2NS0 101505					0.4	
	-2NS0 152520		●	●	●	●	-2NS0 152520					0.8	

DC 55° 菱形 • 正型 • 有孔
PCBN Positive Inserts



标准型	锋利型	增强型
S0102510	S0101505	S0152520
Standard cutting edge	Sharp cutting edge	Strong cutting edge

Shape 图示	公制代码 ISO	Tip Shape 刀片结构	H				英制代码 ANSI	Tip Shape 刀片结构	Dimensions in mm 刀片参数				
			PNH1020	PNH1020	PNH2018	PNH3019			ic	Ød	s	r	la
												0.2	
	DCGW070204-2NS0 1025 10	SLWGR22S	●	●	●	●	DCGW2(1.5)1-2NS0 1025 10	SLWGR22S	6.35	2.8	2.38	0.2	2.2
	-2NS0 101505		●	●	●	●	-2NS0 101505					0.4	
	-2NS0 152520		●	●	●	●	-2NS0 152520					0.8	
	DCGW070208-2NS0 1025 10		●	●	●	●	DCGW2(1.5)2-2NS0 1025 10					0.2	
	-2NS0 101505		●	●	●	●	-2NS0 101505					0.4	
	-2NS0 152520		●	●	●	●	-2NS0 152520					0.8	

DC 55° 菱形 • 正型 • 有孔
PCBN Positive Inserts



标准型	锋利型	增强型
S0102510	S0101505	S0152520
Standard cutting edge	Sharp cutting edge	Strong cutting edge

Shape 图示	公制代码 ISO	Tip Shape 刀片结构	H				英制代码 ANSI	Tip Shape 刀片结构	Dimensions in mm 刀片参数				
			PNH1020	PNH1020	PNH2018	PNH3019			ic	Ød	s	r	la
												0.2	
	DCGW11T304-2NS0 1025 10	SLWGR22S	●	●	●	●	DCGW3(2.5)1-2NS0 1025 10	SLWGR22S	9.525	4.4	3.97	0.2	2.2
	-2NS0 101505		●	●	●	●	-2NS0 101505					0.4	
	-2NS0 152520		●	●	●	●	-2NS0 152520					0.8	
	DCGW11T308-2NS0 1025 10		●	●	●	●	DCGW3(2.5)2-2NS0 1025 10					0.2	
	-2NS0 101505		●	●	●	●	-2NS0 101505					0.4	
	-2NS0 152520		●	●	●	●	-2NS0 152520					0.8	

示例 (Example) : 公制 ISO: DCGW11T304-2NS0 1025 10SLWGR22S PNH1020
英制 ANSI: DCGW3(2.5)1-2NS0 1025 10SLWGR22S PNH1020

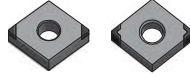
修光刃型刀片

Wiper PCBN Inserts

CN

80° 菱形 • 负型 • 有孔

PCBN Negative Inserts



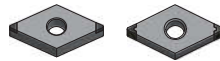
标准型	锋利型	增强型
S0102510	S0101505	S0152520
Standard cutting edge	Sharp cutting edge	Strong cutting edge

Shape 图示	公制代码 ISO	Tip Shape 刀片结构	H				英制代码 ANSI	Tip Shape 刀片结构	Dimensions in mm 刀片参数				
			PNH0120	PNH1020	PNH2018	PNH3019			ic	ød	s	r	la
												0.2	
	CNGA 120404-2NS0 1025 10	SLWGR22S	●	●	●	●	CNGA 431-2NS0 1025 10	SLWGR22S	12.7	5.16	4.76	0.2	2.2
	-2NS0 101505		●	●	●	●	-2NS0 101505					0.4	
	-2NS0 152520		●	●	●	●	-2NS0 152520					0.8	
	CNGA 120408-2NS0 102505		●	●	●	●	CNGA 432-2NS0 1025 10					1.2	
	-2NS0 101505		●	●	●	●	-2NS0 101505						
	-2NS0 103505		●	●	●	●	-2NS0 152520						
	CNGA 120404-4NS0 1025 10	SWWWGR22S	●	●	●	●	CNGA 431-4NS0 1025 10	SWWWGR22S	12.7	5.16	4.76	0.2	2.2
	-4NS0 101505		●	●	●	●	-4NS0 101505					0.4	
	-4NS0 152520		●	●	●	●	-4NS0 152520					0.8	
	CNGA 120408-4NS0 1025 10		●	●	●	●	CNGA 432-4NS0 1025 10					1.2	
	-4NS0 101505		●	●	●	●	-4NS0 101505						
	-4NS0 152520		●	●	●	●	-4NS0 152520						

DN

55° 菱形 • 负型 • 有孔

PCBN Negative Inserts



标准型	锋利型	增强型
S0102510	S0101505	S0152520
Standard cutting edge	Sharp cutting edge	Strong cutting edge

Shape 图示	公制代码 ISO	Tip Shape 刀片结构	H				英制代码 ANSI	Tip Shape 刀片结构	Dimensions in mm 刀片参数				
			PNH0120	PNH1020	PNH2018	PNH3019			ic	ød	s	r	la
												0.2	
	DNGA 150404-2NS0 1025 10	SLWGR22S	●	●	●	●	DNGA 431-2NS0 1025 10	SLWGR22S	12.7	5.16	4.76	0.2	2.2
	-2NS0 101505		●	●	●	●	-2NS0 101505					0.4	
	-2NS0 152520		●	●	●	●	-2NS0 152520					0.8	
	DNGA 150408-2NS0 1025 10		●	●	●	●	DNGA 432-2NS0 1025 10					1.2	
	-2NS0 101505		●	●	●	●	-2NS0 101505						
	-2NS0 152520		●	●	●	●	-2NS0 152520						
	DNGA 150404-4NS0 1025 10	SWWWGR22S	●	●	●	●	DNGA 431-4NS0 1025 10	SWWWGR22S	12.7	5.16	4.76	0.2	2.2
	-4NS0 101505		●	●	●	●	-4NS0 101505					0.4	
	-4NS0 152520		●	●	●	●	-4NS0 152520					0.8	
	DNGA 150408-4NS0 1025 10		●	●	●	●	DNGA 432-4NS0 1025 10					1.2	
	-4NS0 101505		●	●	●	●	-4NS0 101505						
	-4NS0 152520		●	●	●	●	-4NS0 152520						

示例 (Example) : 公制 ISO: DNGA 150408-2NS0 1025 10SLWGR22S PNH1020
 英制 ANSI: DNGA432-2NS0 1025 10SLWGR22S PNH1020

修光刃型刀片

Wiper PCBN Inserts

编码细则请参考B01-B02页

The rule of insert code please refer to page B01-B02

DN

55° 菱形 • 负型 • 有孔

PCBN Negative Inserts



标准型	锋利型	增强型
S0102510	S0101505	S0152520
Standard cutting edge	Sharp cutting edge	Strong cutting edge

Shape 图示	公制代码 ISO	Tip Shape 刀片结构	H				英制代码 ANSI	Tip Shape 刀片结构	Dimensions in mm 刀片参数					
			PNH0120	PNH1020	PNH2018	PNH3019			ic	∅d	s	r	la	
	DNGA 150604-2NS0 1025 10	SLWGR22S	●	●	●	●	DNGA 441-2NS0 1025 10	SLWGR22S	12.7	5.16	4.76		0.2	2.2
	-2NS0 101505		●	●	●	●	-2NS0 101505					0.4		
	-2NS0 152520		●	●	●	●	-2NS0 152520					0.8		
	DNGA 150608-2NS0 1025 10		●	●	●	●	DNGA 442-2NS0 1025 10					1.2		
	-2NS0051502		●	●	●	●	-2NS0 101505							
	-2NS0 152520		●	●	●	●	-2NS0 152520							
	DNGA 150604-4NS0 1025 10	SWWWGR22S	●	●	●	●	DNGA 441-4NS0 1025 10	SWWWGR22S	12.7	5.16	4.76		0.2	2.2
	-4NS0 101505		●	●	●	●	-4NS0 101505					0.4		
	-4NS0 152520		●	●	●	●	-4NS0 152520					0.8		
	DNGA 150608-4NS0 1025 10		●	●	●	●	DNGA 442-4NS0 1025 10					1.2		
	-4NS0 101505		●	●	●	●	-4NS0 101505							
	-4NS0 152520		●	●	●	●	-4NS0 152520							

TN

60° 三角形 • 负型 • 有孔

PCBN Negative Inserts



标准型	锋利型	增强型
S0102510	S0101505	S0152520
Standard cutting edge	Sharp cutting edge	Strong cutting edge

Shape 图示	公制代码 ISO	Tip Shape 刀片结构	H				英制代码 ANSI	Tip Shape 刀片结构	Dimensions in mm 刀片参数					
			PNH0120	PNH1020	PNH2018	PNH3019			ic	∅d	s	r	la	
	TNGA 160404-3NS0 1025 10	SLWGR22S	●	●	●	●	TNGA 331-3NS0 1025 10	SLWGR22S	9.525	3.81	4.76		0.2	2.2
	-3NS0 101505		●	●	●	●	-3NS0 101505					0.4		
	-3NS0 152520		●	●	●	●	-3NS0 152520					0.8		
	TNGA 160408-3NS0 1025 10		●	●	●	●	TNGA 332-3NS0 1025 10					1.2		
	-3NS0 101505		●	●	●	●	-3NS0 101505							
	-3NS0 152520		●	●	●	●	-3NS0 152520							
	TNGA 160404-6NS0 1025 10	SWWWGR22S	●	●	●	●	TNGA 431-6NS0 1025 10	SWWWGR22S	9.525	3.81	4.76		0.2	2.2
	-6NS0 101505		●	●	●	●	-6NS0 101505					0.4		
	-6NS0 152520		●	●	●	●	-6NS0 152520					0.8		
	TNGA 160408-6NS0 1025 10		●	●	●	●	TNGA 432-6NS0 1025 10					1.2		
	-6NS0 101505		●	●	●	●	-6NS0 101505							
	-6NS0 152520		●	●	●	●	-6NS0 152520							

示例 (Example) : 公制 ISO: TNGA 160408-6NS0 1025 10SWWWGR22S PNH1020

英制 ANSI: TNGA432-6NS0 1025 10SWWWGR22S PNH1020

修光刃型刀片

Wiper PCBN Inserts

WN

80° 六边形 • 负型 • 有孔

PCBN Negative Inserts



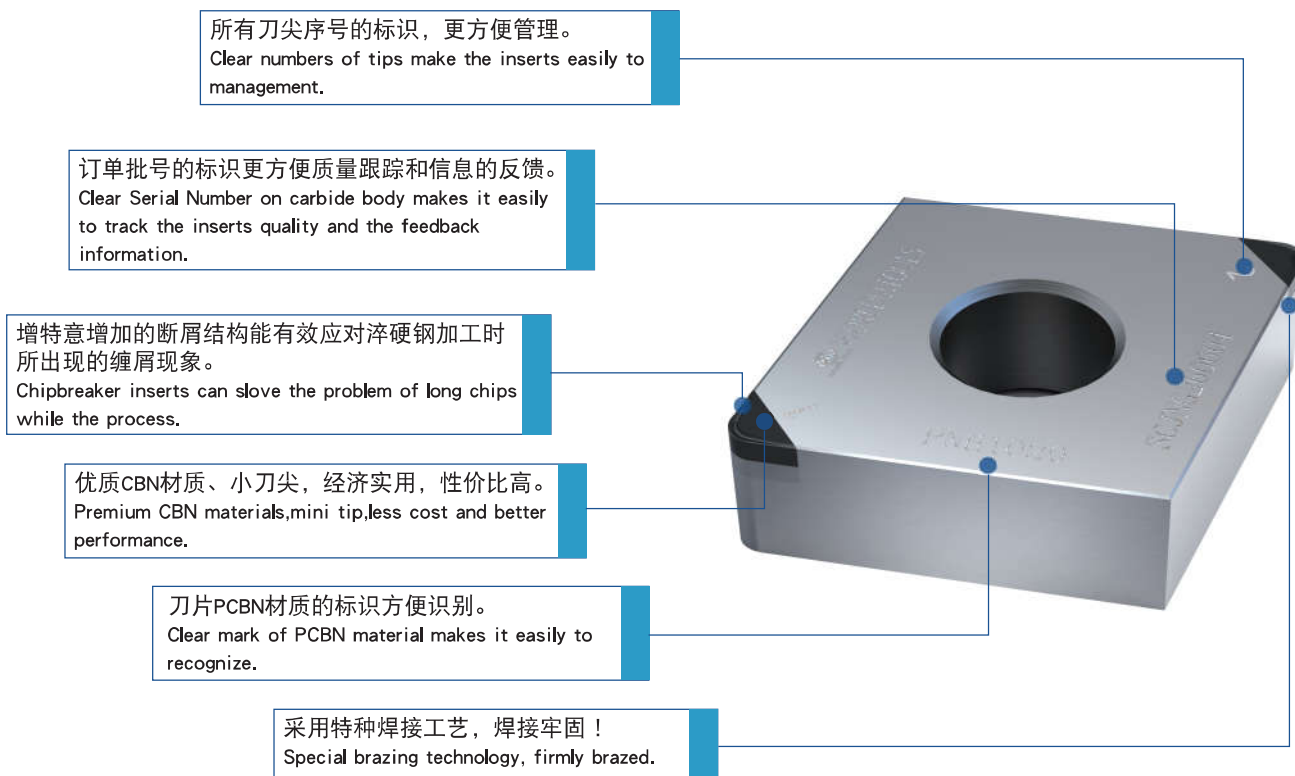
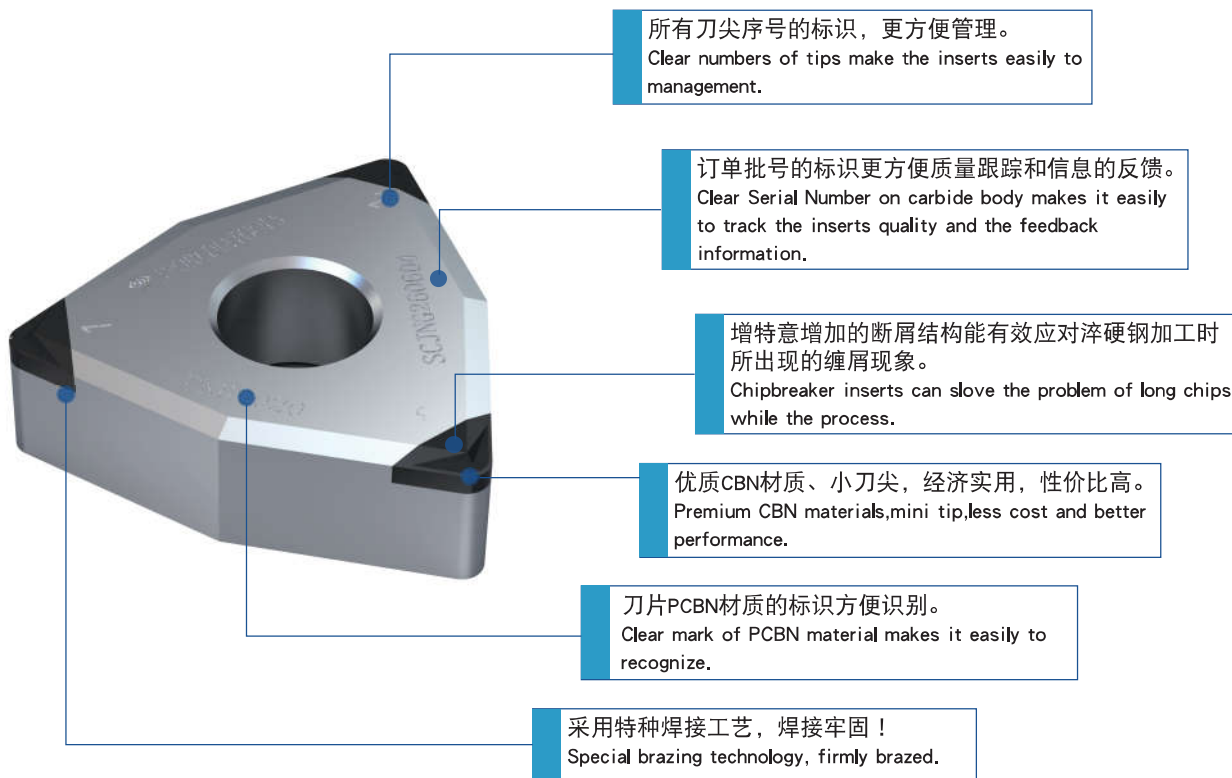
标准型	锋利型	增强型
S0102510	S0101505	S0152520
Standard cutting edge	Sharp cutting edge	Strong cutting edge

Shape 图示	公制代码 ISO	Tip Shape 刀片结构	H				英制代码 ANSI	Tip Shape 刀片结构	Dimensions in mm 刀片参数				
			PNH0120	PNH1020	PNH2018	PNH3019			ic	Ød	s	r	la
	WNGA080404-3NS0102510	SLWGR22S	●	●	●	●	WNGA431-3NS0102510	SLWGR22S	12.7	5.16	4.76	0.2	2.2
	-3NS0101505		●	●	●	●	-3NS0101505						
	-3NS0152520		●	●	●	●	-3NS0152520						
	WNGA080408-3NS0102510		●	●	●	●	WNGA432-3NS0102510						
	-3NS0101505		●	●	●	●	-3NS0101505						
	-3NS0152520		●	●	●	●	-3NS0152520						
	WNGA080404-6NS0102510	SWWWGR22S	●	●	●	●	WNGA431-6NS0102510	SWWWGR22S	12.7	5.16	4.76	0.2	2.2
	-6NS0101505		●	●	●	●	-6NS0101505						
	-6NS0152520		●	●	●	●	-6NS0152520						
	WNGA080408-6NS0102510		●	●	●	●	WNGA432-6NS0102510						
	-6NS0101505		●	●	●	●	-6NS0101505						
	-6NS0152520		●	●	●	●	-6NS0152520						

示例 (Example) : 公制 ISO: WNGA080404-6NS0102510SWWWGR22S PNH1020
 英制 ANSI: WNGA431-6NS0102510SWWWGR22S PNH1020

断屑型刀片

Chip Breaker PCBN Inserts



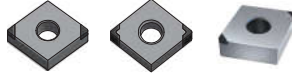
断屑型刀片

Chip Breaker PCBN Inserts

CN

80° 菱形 • 负型 • 有孔

PCBN Negative Inserts



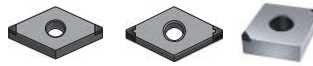
标准型	锋利型	增强型
S0102510	S0101505	S0152520
Standard cutting edge	Sharp cutting edge	Strong cutting edge

Shape 图示	公制代码 ISO	Tip Shape 刀片结构	H				英制代码 ANSI	Tip Shape 刀片结构	Dimensions in mm 刀片参数				
			PNH0120	PNH1020	PNH2018	PNH3019			ic	∅d	s	r	la
	CNGA 120404-2NS0102510	SLCBR422S SLCB22S	●	●	●	●	CNGA431-2NS0102510	SLCBR422S SLCB22S	12.7	5.16	4.76	2.2	0.2
	-2NS0101505		●	●	●	●	-2NS0101505						0.4
	-2NS0152520		●	●	●	●	-2NS0152520						0.8
	CNGA 120408-2NS0102510		●	●	●	●	CNGA432-2NS0102510						1.2
	-2NS0101505		●	●	●	●	-2NS0101505						
	-2NS0152520		●	●	●	●	-2NS0152520						
	CNGA 120404-4NS0102510		●	●	●	●	CNGA431-4NS0102510						0.2
	-4NS0101505		●	●	●	●	-4NS0101505						0.4
	-4NS0152520		●	●	●	●	-4NS0152520						0.8
	CNGA 120408-4NS0102510		●	●	●	●	CNGA432-4NS0102510						1.2
-4NS0101505	●	●	●	●	-4NS0101505								
-4NS0152520	●	●	●	●	-4NS0152520								

DN

55° 菱形 • 负型 • 有孔

PCBN Negative Inserts



标准型	锋利型	增强型
S0102510	S0101505	S0152520
Standard cutting edge	Sharp cutting edge	Strong cutting edge

Shape 图示	公制代码 ISO	Tip Shape 刀片结构	H				英制代码 ANSI	Tip Shape 刀片结构	Dimensions in mm 刀片参数				
			PNH0120	PNH1020	PNH2018	PNH3019			ic	∅d	s	r	la
	DNGA 150404-2NS0102510	SLCBR422S SLCB22S	●	●	●	●	DNGA431-2NS0102510	SLCBR422S SLCB22S	12.7	5.16	4.76	2.2	0.2
	-2NS0101505		●	●	●	●	-2NS0101505						0.4
	-2NS0152520		●	●	●	●	-2NS0152520						0.8
	DNGA 150408-2NS0102510		●	●	●	●	DNGA432-2NS0102510						1.2
	-2NS0101505		●	●	●	●	-2NS0101505						
	-2NS0103505		●	●	●	●	-2NS0152520						
	DNGA 150404-4NS0102510		●	●	●	●	DNGA431-4NS0102510						0.2
	-4NS0101505		●	●	●	●	-4NS0101505						0.4
	-4NS0152520		●	●	●	●	-4NS0152520						0.8
	DNGA 150408-4NS0102510		●	●	●	●	DNGA432-4NS0102510						1.2
-4NS0101505	●	●	●	●	-4NS0101505								
-4NS0152520	●	●	●	●	-4NS0152520								

示例 (Example) : 公制 ISO: DNGA 150408-2NS0102510SLCB22S PNH1020
英制 ANSI: DNGA432-2NS0102510SLCB22S PNH1020

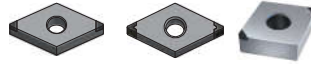
断屑型刀片

Chip Breaker PCBN Inserts

编码细则请参考B01-B02页

The rule of insert code please refer to page B01-B02

DN 55° 菱形 • 负型 • 有孔
PCBN Negative Inserts



标准型	锋利型	增强型
S0102510	S0101505	S0152520
Standard cutting edge	Sharp cutting edge	Strong cutting edge

Shape 图示	公制代码 ISO	Tip Shape 刀片结构	H				英制代码 ANSI	Tip Shape 刀片结构	Dimensions in mm 刀片参数					
			PNH0120	PNH1020	PNH2018	PNH3019			ic	Ød	s	r	la	
	DNGA 150604-2NS0 1025 10	SLCBR422S SLCB22S	●	●	●	●	DNGA 441-2NS0 1025 10	SLCBR422S SLCB22S	12.7	5.16	4.76	0.2	2.2	
	-2NS0 101505		●	●	●	●	-2NS0 101505							
	-2NS0 152520		●	●	●	●	-2NS0 152520							
	DNGA 150608-2NS0 1025 10		●	●	●	●	DNGA 442-2NS0 1025 10							
	-2NS0 101505		●	●	●	●	-2NS0 101505							
	-2NS0 152520		●	●	●	●	-2NS0 152520							
	DNGA 150604-4NS0 1025 10	SWWCBR422S SWWCB22S	●	●	●	●	DNGA 441-4NS0 1025 10	SWWCBR422S SWWCB22S	12.7	5.16	4.76	0.2	2.2	
	-4NS0 101505		●	●	●	●	-4NS0 101505							
	-4NS0 152520		●	●	●	●	-4NS0 152520							
	DNGA 150608-4NS0 1025 10		●	●	●	●	DNGA 442-4NS0 1025 10							
	-4NS0 101505		●	●	●	●	-4NS0 101505							
	-4NS0 152520		●	●	●	●	-4NS0 152520							

WN 80° 六边形 • 负型 • 有孔
PCBN Negative Inserts



标准型	锋利型	增强型
S0102510	S0101505	S0152520
Standard cutting edge	Sharp cutting edge	Strong cutting edge

Shape 图示	公制代码 ISO	Tip Shape 刀片结构	H				英制代码 ANSI	Tip Shape 刀片结构	Dimensions in mm 刀片参数					
			PNH0120	PNH1020	PNH2018	PNH3019			ic	Ød	s	r	la	
	WNGA080404-3NS0 1025 10	SLCBR422S SLCB22S	●	●	●	●	WNGA 431-3NS0 1025 10	SLCBR422S SLCB22S	12.7	5.16	4.76	0.2	2.2	
	-3NS0 101505		●	●	●	●	-3NS0 101505							
	-3NS0 152520		●	●	●	●	-3NS0 152520							
	WNGA080408-3NS0 1025 10		●	●	●	●	WNGA 432-3NS0 1025 10							
	-3NS0 101505		●	●	●	●	-3NS0 101505							
	-3NS0 152520		●	●	●	●	-3NS0 152520							
	WNGA080404-6NS0 1025 10	SWWCBR422S SWWCB22S	●	●	●	●	WNGA 431-6NS0 1025 10	SWWCBR422S SWWCB22S	12.7	5.16	4.76	0.2	2.2	
	-6NS0 101505		●	●	●	●	-6NS0 101505							
	-6NS0 152520		●	●	●	●	-6NS0 152520							
	WNGA080408-6NS0 1025 10		●	●	●	●	WNGA 432-6NS0 1025 10							
	-6NS0 101505		●	●	●	●	-6NS0 101505							
	-6NS0 152520		●	●	●	●	-6NS0 152520							

示例 (Example) : 公制 ISO: WNGA080408-3NS0102510SLCB22S PNH1020
英制 ANSI: WNGA432-3NS0102510SLCB22S PNH1020

可修磨型刀片

PCBN Standard Inserts



采用特种焊接工艺，焊接牢固！
Special brazing technology, firmly brazed.

订单批号的标识更方便质量跟踪和信息的反馈。
Clear Serial Number on carbide body makes it easily to track the inserts quality and the feedback information.

刀片PCBN材质的标识方便识别。
Clear mark of PCBN material makes it easily to recognize.

所有刀尖序号的标识，更方便管理。
Clear numbers of tips make the inserts easily to management.

优质CBN材质。
Premium CBN materials.

可修磨型刀片

PCBN Standard Inserts

编码细则请参考B01-B02页

The rule of insert code please refer to page B01-B02

CC 80° 菱形 • 正型 • 有孔
PCBN Positive Inserts



标准型	锋利型	增强型
S0102510	S0101505	S0152520
Standard cutting edge	Sharp cutting edge	Strong cutting edge

SLST30S

Shape 图示	公制代码 ISO	Tip Shape 刀片结构	H				英制代码 ANSI	Tip Shape 刀片结构	Dimensions in mm 刀片参数				
			PNH0120	PNH1020	PNH2018	PNH3019			ic	Ød	s	r	la
	CCGW060202-1NS0102510	SLST30S	●	●	●	●	CCGW2(1.5)(0.5)-1NS0102510	SLST30S	6.35	2.8	2.38	0.2	3.0
	-1NS0101505		●	●	●	●	-1NS0101505						
	-1NS0152520		●	●	●	●	-1NS0152520						
	CCGW060204-1NS0102510		●	●	●	●	CCGW2(1.5)1-1NS0102510						
	-1NS0101505		●	●	●	●	-1NS0101505						
	-1NS0152520		●	●	●	●	-1NS0152520						
	CCGW060208-1NS0102510		●	●	●	●	CCGW2(1.5)2-1NS0102510						
	-1NS0101505		●	●	●	●	-1NS0101505						
	-1NS0152520		●	●	●	●	-1NS0152520						
	CCGW060202-2NS0102510	SLST30S	●	●	●	●	CCGW2(1.5)(0.5)-2NS0102510	SLST30S	6.35	2.8	2.38	0.2	3.0
	-2NS0101505		●	●	●	●	-2NS0101505						
	-2NS0152520		●	●	●	●	-2NS0152520						
	CCGW060204-2NS0102510		●	●	●	●	CCGW2(1.5)1-2NS0102510						
	-2NS0101505		●	●	●	●	-2NS0101505						
	-2NS0152520		●	●	●	●	-2NS0152520						
	CCGW060208-2NS0102510		●	●	●	●	CCGW2(1.5)2-2NS0102510						
	-2NS0101505		●	●	●	●	-2NS0101505						
	-2NS0152520		●	●	●	●	-2NS0152520						

CC 80° 菱形 • 正型 • 有孔
PCBN Positive Inserts



标准型	锋利型	增强型
S0102510	S0101505	S0152520
Standard cutting edge	Sharp cutting edge	Strong cutting edge

Shape 图示	公制代码 ISO	Tip Shape 刀片结构	H				英制代码 ANSI	Tip Shape 刀片结构	Dimensions in mm 刀片参数				
			PNH0120	PNH1020	PNH2018	PNH3019			ic	Ød	s	r	la
	CCGW09T302-1NS0102510	SLST30S	●	●	●	●	CCGW3(2.5)(0.5)-1NS0102510	SLST30S	9.525	4.4	3.97	0.2	3.0
	-1NS0101505		●	●	●	●	-1NS0101505						
	-1NS0152520		●	●	●	●	-1NS0152520						
	CCGW09T304-1NS0102510		●	●	●	●	CCGW3(2.5)1-1NS0102510						
	-1NS0101505		●	●	●	●	-1NS0101505						
	-1NS0152520		●	●	●	●	-1NS0152520						
	CCGW09T308-1NS0102510		●	●	●	●	CCGW3(2.5)2-1NS0102510						
	-1NS0101505		●	●	●	●	-1NS0101505						
	-1NS0152520		●	●	●	●	-1NS0152520						
	CCGW09T302-2NS0102510	SLST30S	●	●	●	●	CCGW3(2.5)(0.5)-2NS0102510	SLST30S	9.525	4.4	3.97	0.2	3.0
	-2NS0101505		●	●	●	●	-2NS0101505						
	-2NS0152520		●	●	●	●	-2NS0152520						
	CCGW09T304-2NS0102510		●	●	●	●	CCGW3(2.5)1-2NS0102510						
	-2NS0101505		●	●	●	●	-2NS0101505						
	-2NS0152520		●	●	●	●	-2NS0152520						
	CCGW09T308-2NS0102510		●	●	●	●	CCGW3(2.5)2-2NS0102510						
	-2NS0101505		●	●	●	●	-2NS0101505						
	-2NS0152520		●	●	●	●	-2NS0152520						

示例 (Example) : 公制 ISO: CCGW09T308-2NS0102510SLST30S PNH1020

英制 ANSI: CCGW3(2.5)2-2NS0102510SLST30S PNH1020

可修磨型刀片

PCBN Standard Inserts

CC

80° 菱形 • 正型 • 有孔

PCBN Positive Inserts



标准型	锋利型	增强型
S0102510	S0101505	S0152520
Standard cutting edge	Sharp cutting edge	Strong cutting edge

Shape 图示	公制代码 ISO	Tip Shape 刀片结构	H				英制代码 ANSI	Tip Shape 刀片结构	Dimensions in mm 刀片参数				
			PNH0120	PNH1020	PNH2018	PNH3019			ic	Ød	s	r	la
	CCGW120402-1NS0102510	SLST30S	●	●	●	●	CCGW43(0.5)-1NS0102510	SLST30S	12.7	5.5	4.46	3.0	0.2
	-1NS0101505		●	●	●	●	-1NS0101505						0.4
	-1NS0152520		●	●	●	●	-1NS0152520						0.8
	CCGW120404-1NS0102510		●	●	●	●	CCGW431-1NS0102510						1.2
	-1NS0101505		●	●	●	●	-1NS0101505						
	-1NS0152520		●	●	●	●	-1NS0152520						
	CCGW120408-1NS0102510		●	●	●	●	CCGW432-1NS0102510						
	-1NS0101505		●	●	●	●	-1NS0101505						
	-1NS0152520		●	●	●	●	-1NS0152520						
	CCGW120412-1NS0102510		●	●	●	●	CCGW433-1NS0102510						
-1NS0101505	●	●	●	●	-1NS0101505								
-1NS0152520	●	●	●	●	-1NS0152520								
	CCGW120402-2NS0102510	SLST30S	●	●	●	●	CCGW43(0.5)-2NS0102510	SLST30S	12.7	5.5	4.46	3.0	0.2
	-2NS0101505		●	●	●	●	-2NS0101505						0.4
	-2NS0152520		●	●	●	●	-2NS0152520						0.8
	CCGW120404-2NS0102510		●	●	●	●	CCGW431-2NS0102510						1.2
	-2NS0101505		●	●	●	●	-2NS0101505						
	-2NS0152520		●	●	●	●	-2NS0152520						
	CCGW120408-2NS0102510		●	●	●	●	CCGW432-2NS0102510						
	-2NS0101505		●	●	●	●	-2NS0101505						
	-2NS0152520		●	●	●	●	-2NS0152520						
	CCGW120412-2NS0102510		●	●	●	●	CCGW433-2NS0102510						
-2NS0051502	●	●	●	●	-2NS0101505								
-2NS0152520	●	●	●	●	-2NS0152520								

示例 (Example) : 公制 ISO: CCGW120408-2NS0102510SLST30S PNH1020
 英制 ANSI: CCGW432-2NS0102510SLST30S PNH1020



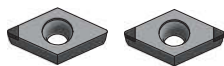
可修磨型刀片

PCBN Standard Inserts

编码细则请参考B01-B02页

The rule of insert code please refer to page B01-B02

DC 55° 菱形 • 正型 • 有孔
PCBN Positive Inserts



标准型	锋利型	增强型
S0102510	S0101505	S0152520
Standard cutting edge	Sharp cutting edge	Strong cutting edge

Shape 图示	公制代码 ISO	Tip Shape 刀片结构	H				英制代码 ANSI	Tip Shape 刀片结构	Dimensions in mm 刀片参数				
			PNH0120	PNH1020	PNH2018	PNH3019			ic	Ød	s	r	la
	DCGW070202-1NS0102510	SLST30S	●	●	●	●	DCGW2(1.5)(0.5)-1NS0102510	SLST30S	6.35	2.8	2.38	0.2	3.0
	-1NS0101505		●	●	●	●	-1NS0101505						
	-1NS0152520		●	●	●	●	-1NS0152520						
	DCGW070204-1NS0102510		●	●	●	●	DCGW2(1.5)1-1NS0102510						
	-1NS0101505		●	●	●	●	-1NS0101505						
	-1NS0152520		●	●	●	●	-1NS0152520						
	DCGW070208-1NS0102510		●	●	●	●	DCGW2(1.5)2-1NS0102510						
	-1NS0101505		●	●	●	●	-1NS0101505						
	-1NS0152520		●	●	●	●	-1NS0152520						
	DCGW070202-2NS0102510	SLST30S	●	●	●	●	DCGW2(1.5)(0.5)-2NS0102510	SLST30S	6.35	2.8	2.38	0.2	3.0
	-2NS0101505		●	●	●	●	-2NS0101505						
	-2NS0152520		●	●	●	●	-2NS0152520						
	DCGW070204-2NS0102510		●	●	●	●	DCGW2(1.5)1-2NS0102510						
	-2NS0101505		●	●	●	●	-2NS0101505						
	-2NS0152520		●	●	●	●	-2NS0152520						
	DCGW070208-2NS0102510		●	●	●	●	DCGW2(1.5)2-2NS0102510						
	-2NS0101505		●	●	●	●	-2NS0101505						
	-2NS0152520		●	●	●	●	-2NS0152520						

DC 55° 菱形 • 正型 • 有孔
PCBN Positive Inserts



标准型	锋利型	增强型
S0102510	S0101505	S0152520
Standard cutting edge	Sharp cutting edge	Strong cutting edge

Shape 图示	公制代码 ISO	Tip Shape 刀片结构	H				英制代码 ANSI	Tip Shape 刀片结构	Dimensions in mm 刀片参数				
			PNH0120	PNH1020	PNH2018	PNH3019			ic	Ød	s	r	la
	DCGW11T302-1NS0102510	SLST30S	●	●	●	●	DCGW3(2.5)(0.5)-1NS0102510	SLST30S	9.525	4.4	3.97	0.2	3.0
	-1NS0101505		●	●	●	●	-1NS0101505						
	-1NS0152520		●	●	●	●	-1NS0152520						
	DCGW11T304-1NS0102510		●	●	●	●	DCGW3(2.5)1-1NS0102510						
	-1NS0101505		●	●	●	●	-1NS0101505						
	-1NS0152520		●	●	●	●	-1NS0152520						
	DCGW11T308-1NS0102510		●	●	●	●	DCGW3(2.5)2-1NS0102510						
	-1NS0101505		●	●	●	●	-1NS0101505						
	-1NS0152520		●	●	●	●	-1NS0152520						
	DCGW11T312-1NS0102510		●	●	●	●	DCGW3(2.5)3-1NS0102510						
	-1NS0101505		●	●	●	●	-1NS0101505						
	-1NS0152520		●	●	●	●	-1NS0152520						
	DCGW11T302-2NS0102510	SLST30S	●	●	●	●	DCGW3(2.5)(0.5)-2NS0102510	SLST30S	9.525	4.4	3.97	0.2	3.0
	-2NS0101505		●	●	●	●	-2NS0101505						
	-2NS0152520		●	●	●	●	-2NS0152520						
	DCGW11T304-2NS0102510		●	●	●	●	DCGW3(2.5)1-2NS0102510						
	-2NS0101505		●	●	●	●	-2NS0101505						
	-2NS0152520		●	●	●	●	-2NS0152520						
	DCGW11T308-2NS0102510		●	●	●	●	DCGW3(2.5)2-2NS0102510						
	-2NS0101505		●	●	●	●	-2NS0101505						
	-2NS0152520		●	●	●	●	-2NS0152520						
	DCGW11T312-2NS0102510		●	●	●	●	DCGW3(2.5)3-2NS0102510						
	-2NS0101505		●	●	●	●	-2NS0101505						
	-2NS0152520		●	●	●	●	-2NS0152520						

示例 (Example) : 公制 ISO: DCGW11T308-2NS0102510SLST30S PNH1020

英制 ANSI: DCGW3(2.5)2-2NS0102510SLST30S PNH1020

可修磨型刀片

PCBN Standard Inserts

TP

60° 三角形 • 正型 • 有孔

PCBN Positive Inserts



标准型	锋利型	增强型
S0102510	S0101505	S0152520
Standard cutting edge	Sharp cutting edge	Strong cutting edge

Shape 图示	公制代码 ISO	Tip Shape 刀片结构	H				英制代码 ANSI	Tip Shape 刀片结构	Dimensions in mm 刀片参数				
			PNH0120	PNH1020	PNH2018	PNH3019			ic	Ød	s	r	la
	TPGW080202-1NS0102510	SLST30S	●	●	●	●	TPGW(1.5)(1.5)(0.5)-1NS0102510	SLST30S	4.76	2.4	2.38	0.2	3.0
	-1NS0101505		●	●	●	●	-1NS0101505						
	-1NS0152520		●	●	●	●	-1NS0152520						
	TPGW080204-1NS0102510		●	●	●	●	TPGW(1.5)(1.5)1-1NS0102510						
	-1NS0101505		●	●	●	●	-1NS0101505						
	-1NS0152520		●	●	●	●	-1NS0152520						
	TPGW080202-3NS0102510	SLST30S	●	●	●	●	TPGW(1.5)(1.5)(0.5)-3NS0102510	SLST30S	4.76	2.4	2.38	0.2	3.0
	-3NS0101505		●	●	●	●	-3NS0101505						
	-3NS0152520		●	●	●	●	-3NS0152520						
	TPGW080204-3NS0102510		●	●	●	●	TPGW(1.5)(1.5)1-3NS0102510						
	-3NS0101505		●	●	●	●	-3NS0101505						
	-3NS0152520		●	●	●	●	-3NS0152520						

TP

60° 三角形 • 正型 • 有孔

PCBN Positive Inserts



标准型	锋利型	增强型
S0102510	S0101505	S0152520
Standard cutting edge	Sharp cutting edge	Strong cutting edge

Shape 图示	公制代码 ISO	Tip Shape 刀片结构	H				英制代码 ANSI	Tip Shape 刀片结构	Dimensions in mm 刀片参数				
			PNH0120	PNH1020	PNH2018	PNH3019			ic	Ød	s	r	la
	TPGW090202-1NS0102510	SLST30S	●	●	●	●	TPGW(1.8)(1.5)(0.5)-1NS0102510	SLST30S	5.56	2.5	2.38	0.2	3.0
	-1NS0101505		●	●	●	●	-1NS0101505						
	-1NS0152520		●	●	●	●	-1NS0152520						
	TPGW090204-1NS0102510		●	●	●	●	TPGW(1.8)(1.5)1-1NS0102510						
	-1NS0101505		●	●	●	●	-1NS0101505						
	-1NS0152520		●	●	●	●	-1NS0152520						
	TPGW090208-1NS0102510	SLST30S	●	●	●	●	TPGW(1.8)(1.5)2-1NS0102510	SLST30S	5.56	2.5	2.38	0.8	3.0
	-1NS0101505		●	●	●	●	-1NS0101505						
	-1NS0152520		●	●	●	●	-1NS0152520						
	TPGW090202-3NS0102510		●	●	●	●	TPGW(1.8)(1.5)(0.5)-3NS0102510						
	-3NS0101505		●	●	●	●	-3NS0101505						
	-3NS0152520		●	●	●	●	-3NS0152520						
	TPGW090204-3NS0102510	SLST30S	●	●	●	●	TPGW(1.8)(1.5)1-3NS0102510	SLST30S	5.56	2.5	2.38	0.4	3.0
	-3NS0101505		●	●	●	●	-3NS0101505						
	-3NS0152520		●	●	●	●	-3NS0152520						
	TPGW090208-3NS0102510		●	●	●	●	TPGW(1.8)(1.5)2-3NS0102510						
	-3NS0101505		●	●	●	●	-3NS0101505						
	-3NS0152520		●	●	●	●	-3NS0152520						

示例 (Example) : 公制 ISO: TPGW090208-3NS0102510SLST30S PNH1020
英制 ANSI: TPGW(1.8)(1.5)2-3NS0102510SLST30S PNH1020

可修磨型刀片

PCBN Standard Inserts

编码细则请参考B01-B02页

The rule of insert code please refer to page B01-B02

TP 60° 三角形 • 正型 • 有孔
PCBN Positive Inserts



标准型	锋利型	增强型
S0102510	S0101505	S0152520
Standard cutting edge	Sharp cutting edge	Strong cutting edge

Shape 图示	公制代码 ISO	Tip Shape 刀片结构	H				英制代码 ANSI	Tip Shape 刀片结构	Dimensions in mm 刀片参数					
			PNH0120	PNH1020	PNH2018	PNH3019			ic	Ød	s	r	la	
													6.35	2.8
	TPGW110302-1NS0102510	SLST30S	●	●	●	●	TPGW22(0.5)-1NS0102510	SLST30S	6.35	2.8	3.18	0.2	3.0	
	-1NS0101505		●	●	●	●	-1NS0101505					0.4		
	-1NS0152520		●	●	●	●	-1NS0152520					0.4		
	TPGW110304-1NS0102510		●	●	●	●	TPGW221-1NS0102510					0.2		
	-1NS0101505		●	●	●	●	-1NS0101505					0.4		
	-1NS0152520		●	●	●	●	-1NS0152520					0.4		
	TPGW110302-3NS0102510		●	●	●	●	TPGW22(0.5)-3NS0102510					0.2		
	-3NS0101505		●	●	●	●	-3NS0101505					0.4		
	-3NS0152520		●	●	●	●	-3NS0152520					0.4		
	TPGW110304-3NS0102510		●	●	●	●	TPGW221-3NS0102510					0.2		
	-3NS0101505		●	●	●	●	-3NS0101505					0.4		
	-3NS0152520		●	●	●	●	-3NS0152520					0.4		

TP 60° 三角形 • 正型 • 有孔
PCBN Positive Inserts



标准型	锋利型	增强型
S0102510	S0101505	S0152520
Standard cutting edge	Sharp cutting edge	Strong cutting edge

Shape 图示	公制代码 ISO	Tip Shape 刀片结构	H				英制代码 ANSI	Tip Shape 刀片结构	Dimensions in mm 刀片参数					
			PNH0120	PNH1020	PNH2018	PNH3019			ic	Ød	s	r	la	
													9.525	4.4
	TPGW160302-1NS0102510	SLST30S	●	●	●	●	TPGW32(0.5)-1NS0102510	SLST30S	9.525	4.4	3.18	0.2	3.0	
	-1NS0101505		●	●	●	●	-1NS0101505					0.4		
	-1NS0152520		●	●	●	●	-1NS0152520					0.8		
	TPGW160304-1NS0102510		●	●	●	●	TPGW321-1NS0102510					0.2		
	-1NS0101505		●	●	●	●	-1NS0101505					0.4		
	-1NS0152520		●	●	●	●	-1NS0152520					0.8		
	TPGW160308-1NS0102510		●	●	●	●	TPGW322-1NS0102510					0.2		
	-1NS0101505		●	●	●	●	-1NS0101505					0.4		
	-1NS0152520		●	●	●	●	-1NS0152520					0.8		
	TPGW160302-3NS0102510		●	●	●	●	TPGW32(0.5)-3NS0102510					0.2		
	-3NS0101505		●	●	●	●	-3NS0101505					0.4		
	-3NS0152520		●	●	●	●	-3NS0152520					0.8		
TPGW160304-3NS0102510	●	●	●	●	TPGW321-3NS0102510	0.2								
-3NS0101505	●	●	●	●	-3NS0101505	0.4								
-3NS0152520	●	●	●	●	-3NS0152520	0.8								
TPGW160308-3NS0102510	●	●	●	●	TPGW322-3NS0102510	0.2								
-3NS0101505	●	●	●	●	-3NS0101505	0.4								
-3NS0152520	●	●	●	●	-3NS0152520	0.8								

示例 (Example) : 公制 ISO: TPGW160308-3NS0102510SLST30S PNH1020
英制 ANSI: TPGW322-3NS0102510SLST30S PNH1020

可修磨型刀片

PCBN Standard Inserts

TP

60° 三角形 • 正型 • 有孔

PCBN Positive Inserts



标准型	锋利型	增强型
S0102510	S0101505	S0152520
Standard cutting edge	Sharp cutting edge	Strong cutting edge

Shape 图示	公制代码 ISO	Tip Shape 刀片结构	H				英制代码 ANSI	Tip Shape 刀片结构	Dimensions in mm 刀片参数				
			PNH0120	PNH1020	PNH2018	PNH3019			ic	Ød	s	r	la
	TPGW160402-1NS0102510	SLST30S	●	●	●	●	TPGW33(0.5)-1NS0102510	SLST30S	9.525	4.4	4.76	0.2	3.0
	-1NS0101505		●	●	●	●	-1NS0101505						
	-1NS0152520		●	●	●	●	-1NS0152520						
	TPGW160404-1NS0102510		●	●	●	●	TPGW331-1NS0102510						
	-1NS0101505		●	●	●	●	-1NS0101505						
	-1NS0152520		●	●	●	●	-1NS0152520						
	TPGW160408-1NS0102510		●	●	●	●	TPGW332-1NS0102510						
	-1NS0101505		●	●	●	●	-1NS0101505						
	-1NS0152520		●	●	●	●	-1NS0152520						
	TPGW160402-3NS0102510	SLST30S	●	●	●	●	TPGW33(0.5)-3NS0102510	SLST30S	9.525	4.4	4.76	0.2	3.0
	-3NS0101505		●	●	●	●	-3NS0101505						
	-3NS0152520		●	●	●	●	-3NS0152520						
	TPGW160404-3NS0102510		●	●	●	●	TPGW331-3NS0102510						
	-3NS0101505		●	●	●	●	-3NS0101505						
	-3NS0152520		●	●	●	●	-3NS0152520						
	TPGW160408-3NS0102510		●	●	●	●	TPGW332-3NS0102510						
	-3NS0101505		●	●	●	●	-3NS0101505						
	-3NS0152520		●	●	●	●	-3NS0152520						

示例 (Example) : 公制 ISO: TPGW160408-3NS0102510SLST30S PNH1020
 英制 ANSI: TPGW332-3NS0102510SLST30S PNH1020



可修磨型刀片

PCBN Standard Inserts

编码细则请参考B01-B02页

The rule of insert code please refer to page B01-B02

VB 35° 菱形 • 正型 • 有孔
PCBN Positive Inserts



标准型	锋利型	增强型
S0102510	S0101505	S0152520
Standard cutting edge	Sharp cutting edge	Strong cutting edge

Shape 图示	公制代码 ISO	Tip Shape 刀片结构	H				英制代码 ANSI	Tip Shape 刀片结构	Dimensions in mm 刀片参数				
			PNH0120	PNH1020	PNH2018	PNH3019			ic	Ød	s	r	la
	VBGW110302-1NS0 102510	SLST30S	●	●	●	●	VBGW22(0.5)-1NS0 102510	SLST30S	6.35	2.8	3.18	0.2	3.0
	-1NS0 101505		●	●	●	●	-1NS0 101505						
	-1NS0 152520		●	●	●	●	-1NS0 152520						
	VBGW110304-1NS0 102510		●	●	●	●	VBGW221-1NS0 102510						
	-1NS0 101505		●	●	●	●	-1NS0 101505						
	-1NS0 152520		●	●	●	●	-1NS0 152520						
	VBGW110308-1NS0 102510		●	●	●	●	VBGW222-1NS0 102510						
	-1NS0 101505		●	●	●	●	-1NS0 101505						
	-1NS0 152520		●	●	●	●	-1NS0 152520						
	VBGW110302-2NS0 102510	SLST30S	●	●	●	●	VBGW22(0.5)-2NS0 102510	SLST30S	6.35	2.8	3.18	0.2	3.0
	-2NS0 101505		●	●	●	●	-2NS0 101505						
	-2NS0 152520		●	●	●	●	-2NS0 152520						
	VBGW110304-2NS0 102510		●	●	●	●	VBGW221-2NS0 102510						
	-2NS0 101505		●	●	●	●	-2NS0 101505						
	-2NS0 152520		●	●	●	●	-2NS0 152520						
	VBGW110308-2NS0 102510		●	●	●	●	VBGW222-2NS0 102510						
	-2NS0 101505		●	●	●	●	-2NS0 101505						
	-2NS0 152520		●	●	●	●	-2NS0 152520						

VB 35° 菱形 • 正型 • 有孔
PCBN Positive Inserts



标准型	锋利型	增强型
S0102510	S0101505	S0152520
Standard cutting edge	Sharp cutting edge	Strong cutting edge

Shape 图示	公制代码 ISO	Tip Shape 刀片结构	H				英制代码 ANSI	Tip Shape 刀片结构	Dimensions in mm 刀片参数				
			PNH0120	PNH1020	PNH2018	PNH3019			ic	Ød	s	r	la
	VBGW160402-1NS0 102510	SLST30S	●	●	●	●	VBGW33(0.5)-1NS0 102510	SLST30S	9.525	4.4	4.76	0.2	3.0
	-1NS0 101505		●	●	●	●	-1NS0 101505						
	-1NS0 152520		●	●	●	●	-1NS0 152520						
	VBGW160404-1NS0 102510		●	●	●	●	VBGW331-1NS0 102510						
	-1NS0 101505		●	●	●	●	-1NS0 101505						
	-1NS0 152520		●	●	●	●	-1NS0 152520						
	VBGW160408-1NS0 102510		●	●	●	●	VBGW332-1NS0 102510						
	-1NS0 101505		●	●	●	●	-1NS0 101505						
	-1NS0 152520		●	●	●	●	-1NS0 152520						
	VBGW160402-2NS0 102510	SLST30S	●	●	●	●	VBGW33(0.5)-2NS0 102510	SLST30S	9.525	4.4	4.76	0.2	3.0
	-2NS0 101505		●	●	●	●	-2NS0 101505						
	-2NS0 152520		●	●	●	●	-2NS0 152520						
	VBGW160404-2NS0 102510		●	●	●	●	VBGW331-2NS0 102510						
	-2NS0 101505		●	●	●	●	-2NS0 101505						
	-2NS0 152520		●	●	●	●	-2NS0 152520						
	VBGW160408-2NS0 102510		●	●	●	●	VBGW332-2NS0 102510						
	-2NS0 101505		●	●	●	●	-2NS0 101505						
	-2NS0 152520		●	●	●	●	-2NS0 152520						

示例 (Example) : 公制 ISO: VBGW160408-2NS0102510SLST30S PNH1020

英制 ANSI: VBGW332-2NS0102510SLST30S PNH1020

可修磨型刀片

PCBN Standard Inserts

VC

35° 菱形 • 正型 • 有孔

PCBN Positive Inserts



标准型	锋利型	增强型
S0102510	S0101505	S0152520
Standard cutting edge	Sharp cutting edge	Strong cutting edge

Shape 图示	公制代码 ISO	Tip Shape 刀片结构	H				英制代码 ANSI	Tip Shape 刀片结构	Dimensions in mm 刀片参数				
			PNH0120	PNH1020	PNH2018	PNH3019			ic	Ød	s	r	la
	VCGW080202-1NS0102510	SLST30S	●	●	●	●	VCGW(1.5)(1.5)(0.5)-1NS0102510	SLST30S	4.76	2.3	2.38	0.2	3.0
	-1NS0101505		●	●	●	●	-1NS0101505						
	-1NS0152520		●	●	●	●	-1NS0152520						
	VCGW080204-1NS0102510		●	●	●	●	VCGW(1.5)(1.5)1-1NS0102510						
	-1NS0101505		●	●	●	●	-1NS0101505						
	-1NS0152520		●	●	●	●	-1NS0152520						
	VCGW080208-1NS0102510		●	●	●	●	VCGW(1.5)(1.5)2-1NS0102510						
	-1NS0101505		●	●	●	●	-1NS0101505						
	-1NS0152520		●	●	●	●	-1NS0152520						
	VCGW080202-2NS0102510	SLST30S	●	●	●	●	VCGW(1.5)(1.5)(0.5)-2NS0102510	SLST30S	4.76	2.3	2.38	0.2	3.0
	-2NS0101505		●	●	●	●	-2NS0101505						
	-2NS0152520		●	●	●	●	-2NS0152520						
	VCGW080204-2NS0102510		●	●	●	●	VCGW(1.5)(1.5)1-2NS0102510						
	-2NS0101505		●	●	●	●	-2NS0101505						
	-2NS0152520		●	●	●	●	-2NS0152520						
	VCGW080208-2NS0102510		●	●	●	●	VCGW(1.5)(1.5)2-2NS0102510						
	-2NS0101505		●	●	●	●	-2NS0101505						
	-2NS0152520		●	●	●	●	-2NS0152520						

VC

35° 菱形 • 正型 • 有孔

PCBN Positive Inserts



标准型	锋利型	增强型
S0102510	S0101505	S0152520
Standard cutting edge	Sharp cutting edge	Strong cutting edge

Shape 图示	公制代码 ISO	Tip Shape 刀片结构	H				英制代码 ANSI	Tip Shape 刀片结构	Dimensions in mm 刀片参数				
			PNH0120	PNH1020	PNH2018	PNH3019			ic	Ød	s	r	la
	VCGW110302-1NS0102510	SLST30S	●	●	●	●	VCGW22(0.5)-1NS0102510	SLST30S	6.35	2.8	3.18	0.2	3.0
	-1NS0101505		●	●	●	●	-1NS0101505						
	-1NS0152520		●	●	●	●	-1NS0152520						
	VCGW110304-1NS0102510		●	●	●	●	VCGW221-1NS0102510						
	-1NS0101505		●	●	●	●	-1NS0101505						
	-1NS0152520		●	●	●	●	-1NS0152520						
	VCGW110308-1NS0102510		●	●	●	●	VCGW222-1NS0102510						
	-1NS0101505		●	●	●	●	-1NS0101505						
	-1NS0152520		●	●	●	●	-1NS0152520						
	VCGW110302-2NS0102510	SLST30S	●	●	●	●	VCGW22(0.5)-2NS0102510	SLST30S	6.35	2.8	3.18	0.2	3.0
	-2NS0101505		●	●	●	●	-2NS0101505						
	-2NS0152520		●	●	●	●	-2NS0152520						
	VCGW110304-2NS0102510		●	●	●	●	VCGW221-2NS0102510						
	-2NS0101505		●	●	●	●	-2NS0101505						
	-2NS0152520		●	●	●	●	-2NS0152520						
	VCGW110308-2NS0102510		●	●	●	●	VCGW222-2NS0102510						
	-2NS0101505		●	●	●	●	-2NS0101505						
	-2NS0152520		●	●	●	●	-2NS0152520						

示例 (Example) : 公制 ISO: VCGW110308-2NS0102510SLST30S PNH1020

英制 ANSI: VCGW222-2NS0102510SLST30S PNH1020

可修磨型刀片

PCBN Standard Inserts

编码细则请参考B01-B02页

The rule of insert code please refer to page B01-B02

VC 35° 菱形 • 正型 • 有孔
PCBN Positive Inserts



标准型	锋利型	增强型
S0102510	S0101505	S0152520
Standard cutting edge	Sharp cutting edge	Strong cutting edge

Shape 图示	公制代码 ISO	Tip Shape 刀片结构	H				英制代码 ANSI	Tip Shape 刀片结构	Dimensions in mm 刀片参数				
			PNH0120	PNH1020	PNH2018	PNH3019			ic	ød	s	r	la
	VCGW160402-1NS0102510	SLST30S	●	●	●	●	VCGW33(0.5)-1NS0102510	SLST30S	9.525	4.4	4.76	0.2	3.0
	-1NS0101505		●	●	●	●	-1NS0101505						
	-1NS0152520		●	●	●	●	-1NS0152520						
	VCGW160404-1NS0102510		●	●	●	●	VCGW331-1NS0102510					0.4	
	-1NS0101505		●	●	●	●	-1NS0101505						
	-1NS0152520		●	●	●	●	-1NS0152520						
	VCGW160408-1NS0102510		●	●	●	●	VCGW332-1NS0102510					0.8	
	-1NS0101505		●	●	●	●	-1NS0101505						
	-1NS0152520		●	●	●	●	-1NS0152520						
	VCGW160402-2NS0102510	SLST30S	●	●	●	●	VCGW33(0.5)-2NS0102510	SLST30S	9.525	4.4	4.76	0.2	3.0
	-2NS0101505		●	●	●	●	-2NS0101505						
	-2NS0152520		●	●	●	●	-2NS0152520						
	VCGW160404-2NS0102510		●	●	●	●	VCGW331-2NS0102510					0.4	
	-2NS0101505		●	●	●	●	-2NS0101505						
	-2NS0152520		●	●	●	●	-2NS0152520						
	VCGW160408-2NS0102510		●	●	●	●	VCGW332-2NS0102510					0.8	
	-2NS0101505		●	●	●	●	-2NS0101505						
	-2NS0152520		●	●	●	●	-2NS0152520						

示例 (Example) : 公制 ISO: VCGW160408-2NS0102510SLST30S PNH1020
英制 ANSI: VCGW332-2NS0102510SLST30S PNH1020

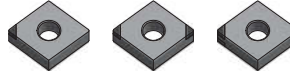
可修磨型刀片

PCBN Standard Inserts

CN

80° 菱形 • 负型 • 有孔

PCBN Negative Inserts



标准型	锋利型	增强型
S0102510	S0101505	S0152520
Standard cutting edge	Sharp cutting edge	Strong cutting edge

Shape 图示	公制代码 ISO	Tip Shape 刀片结构	H				英制代码 ANSI	Tip Shape 刀片结构	Dimensions in mm 刀片参数				
			PNH1020	PNH1020	PNH2018	PNH3019			ic	d	s	r	la
	CNGA 120402-1NS0 1025 10	SLST30S	●	●	●	●	CNGA43(0.5)-1NS0 1025 10	SLST30S	12.7	5.16	4.76	0.2	3.0
	-1NS0 101505		●	●	●	●	-1NS0 101505						
	-1NS0 152520		●	●	●	●	-1NS0 152520						
	CNGA 120404-1NS0 1025 10		●	●	●	●	CNGA431-1NS0 1025 10						
	-1NS0 101505		●	●	●	●	-1NS0 101505						
	-1NS0 152520		●	●	●	●	-1NS0 152520						
	CNGA 120408-1NS0 1025 10		●	●	●	●	CNGA432-1NS0 1025 10						
	-1NS0 101505		●	●	●	●	-1NS0 101505						
	-1NS0 152520		●	●	●	●	-1NS0 152520						
	CNGA 120412-1NS0 1025 10		●	●	●	●	CNGA433-1NS0 1025 10						
	-1NS0 101505		●	●	●	●	-1NS0 101505						
	-1NS0 152520		●	●	●	●	-1NS0 152520						
	CNGA 120402-2NS0 1025 10	SLST30S	●	●	●	●	CNGA43(0.5)-2NS0 1025 10	SLST30S	12.7	5.16	4.76	0.2	3.0
	-2NS0 101505		●	●	●	●	-2NS0 101505						
	-2NS0 152520		●	●	●	●	-2NS0 152520						
	CNGA 120404-2NS0 1025 10		●	●	●	●	CNGA431-2NS0 1025 10						
	-2NS0 101505		●	●	●	●	-2NS0 101505						
	-2NS0 152520		●	●	●	●	-2NS0 152520						
	CNGA 120408-2NS0 1025 10		●	●	●	●	CNGA432-2NS0 1025 10						
	-2NS0 101505		●	●	●	●	-2NS0 101505						
	-2NS0 152520		●	●	●	●	-2NS0 152520						
	CNGA 120412-2NS0 1025 10		●	●	●	●	CNGA433-2NS0 1025 10						
	-2NS0 101505		●	●	●	●	-2NS0 101505						
	-2NS0 152520		●	●	●	●	-2NS0 152520						
	CNGA 120402-4NS0 1025 10	SLST30S	●	●	●	●	CNGA43(0.5)-4NS0 1025 10	SLST30S	12.7	5.16	4.76	0.2	3.0
	-4NS0 101505		●	●	●	●	-4NS0 101505						
	-4NS0 152520		●	●	●	●	-4NS0 152520						
	CNGA 120404-4NS0 1025 10		●	●	●	●	CNGA431-4NS0 1025 10						
	-4NS0 101505		●	●	●	●	-4NS0 101505						
	-4NS0 152520		●	●	●	●	-4NS0 152520						
	CNGA 120408-4NS0 1025 10		●	●	●	●	CNGA432-4NS0 1025 10						
	-4NS0 101505		●	●	●	●	-4NS0 101505						
	-4NS0 152520		●	●	●	●	-4NS0 152520						
	CNGA 120412-4NS0 1025 10		●	●	●	●	CNGA433-4NS0 1025 10						
	-4NS0 101505		●	●	●	●	-4NS0 101505						
	-4NS0 152520		●	●	●	●	-4NS0 152520						

示例 (Example) : 公制 ISO: CNGA 120408-4NS0 1025 10SLST30S PNH1020
 英制 ANSI: CNGA432-4NS0 1025 10SLST30S PNH1020

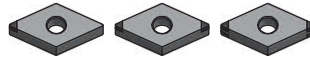
可修磨型刀片

PCBN Standard Inserts

编码细则请参考B01-B02页

The rule of insert code please refer to page B01-B02

DN 55° 菱形 • 负型 • 有孔
PCBN Negative Inserts



标准型	锋利型	增强型
S0102510	S0101505	S0152520
Standard cutting edge	Sharp cutting edge	Strong cutting edge

Shape 图示	公制代码 ISO	Tip Shape 刀片结构	H				英制代码 ANSI	Tip Shape 刀片结构	Dimensions in mm 刀片参数				
			PNH0120	PNH1020	PNH2018	PNH3019			ic	ød	s	r	la
	DNGA 150402-1NS0102510	SLST30S	●	●	●	●	DNGA43(0.5)-1NS0102510	SLST30S	12.7	5.16	4.76	0.2	3.0
	-1NS0101505		●	●	●	●	-1NS0101505					0.4	
	-1NS0152520		●	●	●	●	-1NS0152520					0.8	
	DNGA 150404-1NS0102510		●	●	●	●	DNGA431-1NS0102510					1.2	
	-1NS0101505		●	●	●	●	-1NS0101505						
	-1NS0152520		●	●	●	●	-1NS0152520						
	DNGA 150408-1NS0102510		●	●	●	●	DNGA432-1NS0102510						
	-1NS0101505		●	●	●	●	-1NS0101505						
	-1NS0152520		●	●	●	●	-1NS0152520						
	DNGA 150402-2NS0102510	SLST30S	●	●	●	●	DNGA43(0.5)-2NS0102510	SLST30S	12.7	5.16	4.76	0.2	3.0
	-2NS0101505		●	●	●	●	-2NS0101505					0.4	
	-2NS0152520		●	●	●	●	-2NS0152520					0.8	
	DNGA 150404-2NS0102510		●	●	●	●	DNGA431-2NS0102510					1.2	
	-2NS0101505		●	●	●	●	-2NS0101505						
	-2NS0152520		●	●	●	●	-2NS0152520						
	DNGA 150408-2NS0102510		●	●	●	●	DNGA432-2NS0102510						
	-2NS0101505		●	●	●	●	-2NS0101505						
	-2NS0152520		●	●	●	●	-2NS0152520						
	DNGA 150402-4NS0102510	SLST30S	●	●	●	●	DNGA43(0.5)-4NS0102510	SLST30S	12.7	5.16	4.76	0.2	3.0
	-4NS0101505		●	●	●	●	-4NS0101505					0.4	
	-4NS0152520		●	●	●	●	-4NS0152520					0.8	
	DNGA 150404-4NS0102510		●	●	●	●	DNGA431-4NS0102510					1.2	
	-4NS0101505		●	●	●	●	-4NS0101505						
	-4NS0152520		●	●	●	●	-4NS0152520						
	DNGA 150408-4NS0102510		●	●	●	●	DNGA432-4NS0102510						
	-4NS0101505		●	●	●	●	-4NS0101505						
	-4NS0152520		●	●	●	●	-4NS0152520						

示例 (Example) : 公制 ISO: DNGA 150408-4NS0102510SLST30S PNH1020
英制 ANSI: DNGA432-4NS0102510SLST30S PNH1020

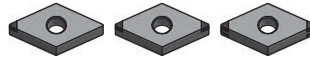
可修磨型刀片

PCBN Standard Inserts

DN

55° 菱形 • 负型 • 有孔

PCBN Negative Inserts



标准型	锋利型	增强型
S0102510	S0101505	S0152520
Standard cutting edge	Sharp cutting edge	Strong cutting edge

Shape 图示	公制代码 ISO	Tip Shape 刀片结构	H				英制代码 ANSI	Tip Shape 刀片结构	Dimensions in mm 刀片参数				
			PNH0120	PNH1020	PNH2018	PNH3019			ic	∅d	s	r	la
	DNGA 150602-1NS0102510	SLST30S	●	●	●	●	DNGA43(0.5)-1NS0102510	SLST30S	12.7	5.16	6.35	3.0	0.2
	-1NS0101505		●	●	●	●	-1NS0101505						0.4
	-1NS0152520		●	●	●	●	-1NS0152520						0.8
	DNGA 150604-1NS0102510		●	●	●	●	DNGA431-1NS0102510						1.2
	-1NS0101505		●	●	●	●	-1NS0101505						
	-1NS0152520		●	●	●	●	-1NS0152520						
	DNGA 150608-1NS0102510		●	●	●	●	DNGA432-1NS0102510						
	-1NS0101505		●	●	●	●	-1NS0101505						
	-1NS0152520		●	●	●	●	-1NS0152520						
	DNGA 150612-1NS0102510		●	●	●	●	DNGA433-1NS0102510						
	-1NS0101505		●	●	●	●	-1NS0101505						
	-1NS0152520		●	●	●	●	-1NS0152520						
	DNGA 150602-2NS0102510	SLST30S	●	●	●	●	DNGA43(0.5)-2NS0102510	SLST30S	12.7	5.16	6.35	3.0	0.2
	-2NS0101505		●	●	●	●	-2NS0101505						0.4
	-2NS0152520		●	●	●	●	-2NS0152520						0.8
	DNGA 150604-2NS0102510		●	●	●	●	DNGA431-2NS0102510						1.2
	-2NS0101505		●	●	●	●	-2NS0101505						
	-2NS0152520		●	●	●	●	-2NS0152520						
	DNGA 150608-2NS0102510		●	●	●	●	DNGA432-2NS0102510						
	-2NS0101505		●	●	●	●	-2NS0101505						
	-2NS0152520		●	●	●	●	-2NS0152520						
	DNGA 150612-2NS0102510		●	●	●	●	DNGA433-2NS0102510						
	-2NS0101505		●	●	●	●	-2NS0101505						
	-2NS0152520		●	●	●	●	-2NS0152520						
	DNGA 150602-4NS0102510	SLST30S	●	●	●	●	DNGA43(0.5)-4NS0102510	SLST30S	12.7	5.16	6.35	3.0	0.2
	-4NS0101505		●	●	●	●	-4NS0101505						0.4
	-4NS0152520		●	●	●	●	-4NS0152520						0.8
	DNGA 150604-4NS0102510		●	●	●	●	DNGA431-4NS0102510						1.2
	-4NS0101505		●	●	●	●	-4NS0101505						
	-4NS0152520		●	●	●	●	-4NS0152520						
	DNGA 150608-4NS0102510		●	●	●	●	DNGA432-4NS0102510						
	-4NS0101505		●	●	●	●	-4NS0101505						
	-4NS0152520		●	●	●	●	-4NS0152520						
	DNGA 150612-4NS0102510		●	●	●	●	DNGA433-4NS0102510						
	-4NS0101505		●	●	●	●	-4NS0101505						
	-4NS0152520		●	●	●	●	-4NS0152520						

示例 (Example) : 公制 ISO: DNGA 150608-4NS0102510SLST30S PNH1020
 英制 ANSI: DNGA432-4NS0102510SLST30S PNH1020



可修磨型刀片

PCBN Standard Inserts

编码细则请参考B01-B02页

The rule of insert code please refer to page B01-B02

SN 90° 正方形 • 负型 • 有孔
PCBN Negative Inserts



标准型	锋利型	增强型
S0102510	S0101505	S0152520
Standard cutting edge	Sharp cutting edge	Strong cutting edge

Shape 图示	公制代码 ISO	Tip Shape 刀片结构	H				英制代码 ANSI	Tip Shape 刀片结构	Dimensions in mm 刀片参数				
			PNH0120	PNH1020	PNH2018	PNH3019			ic	∅d	s	r	la
	SNGA 120402-1NS0102510	SLST30S	●	●	●	●	SNGA43(0.5)-1NS0102510	SLST30S	12.7	5.16	4.76	0.2	3.0
	-1NS0101505		●	●	●	●	-1NS0101505						
	-1NS0152520		●	●	●	●	-1NS0152520						
	SNGA 120404-1NS0102510		●	●	●	●	SNGA431-1NS0102510						
	-1NS0101505		●	●	●	●	-1NS0101505						
	-1NS0152520		●	●	●	●	-1NS0152520						
	SNGA 120408-1NS0102510		●	●	●	●	SNGA432-1NS0102510						
	-1NS0101505		●	●	●	●	-1NS0101505						
	-1NS0152520		●	●	●	●	-1NS0152520						
SNGA 120412-1NS0102510	●	●	●	●	SNGA433-1NS0102510								
-1NS0101505	●	●	●	●	-1NS0101505								
-1NS0152520	●	●	●	●	-1NS0152520								
	SNGA 120402-4NS0102510	SLST30S	●	●	●	●	SNGA43(0.5)-4NS0102510	SLST30S	12.7	5.16	4.76	0.2	3.0
	-4NS0101505		●	●	●	●	-4NS0101505						
	-4NS0152520		●	●	●	●	-4NS0152520						
	SNGA 120404-4NS0102510		●	●	●	●	SNGA431-4NS0102510						
	-4NS0101505		●	●	●	●	-4NS0101505						
	-4NS0152520		●	●	●	●	-4NS0152520						
	SNGA 120408-4NS0102510		●	●	●	●	SNGA432-4NS0102510						
	-4NS0101505		●	●	●	●	-4NS0101505						
	-4NS0152520		●	●	●	●	-4NS0152520						
SNGA 120412-4NS0102510	●	●	●	●	SNGA433-4NS0102510								
-4NS0101505	●	●	●	●	-4NS0101505								
-4NS0152520	●	●	●	●	-4NS0152520								
	SNGA 120402-8NS0102510	SLST30S	●	●	●	●	SNGA43(0.5)-8NS0102510	SLST30S	12.7	5.16	4.76	0.2	3.0
	-8NS0101505		●	●	●	●	-8NS0101505						
	-8NS0152520		●	●	●	●	-8NS0152520						
	SNGA 120404-8NS0102510		●	●	●	●	SNGA431-8NS0102510						
	-8NS0101505		●	●	●	●	-8NS0101505						
	-8NS0152520		●	●	●	●	-8NS0152520						
	SNGA 120408-8NS0102510		●	●	●	●	SNGA432-8NS0102510						
	-8NS0101505		●	●	●	●	-8NS0101505						
	-8NS0152520		●	●	●	●	-8NS0152520						
SNGA 120412-8NS0102510	●	●	●	●	SNGA433-8NS0102510								
-8NS0101505	●	●	●	●	-8NS0101505								
-8NS0152520	●	●	●	●	-8NS0152520								

示例 (Example) : 公制 ISO: SNGA 120408-8NS0102510SLST30S PNH1020
英制 ANSI: SNGA432-8NS0102510SLST30S PNH1020

可修磨型刀片

PCBN Standard Inserts

TN

60° 三角形 • 负型 • 有孔

PCBN Negative Inserts



标准型	锋利型	增强型
S0102510	S0101505	S0152520
Standard cutting edge	Sharp cutting edge	Strong cutting edge

Shape 图示	公制代码 ISO	Tip Shape 刀片结构	H				英制代码 ANSI	Tip Shape 刀片结构	Dimensions in mm 刀片参数				
			PNH1020	PNH1020	PNH2018	PNH3019			ic	∅d	s	r	la
	TNGA 160402-1NS0102510	SLST30S	●	●	●	●	TNGA33(0.5)-1NS0102510	SLST30S	9.525	3.81	4.76	0.2	3.0
	-1NS0101505		●	●	●	●	-1NS0101505						
	-1NS0152520		●	●	●	●	-1NS0152520						
	TNGA 160404-1NS0102510		●	●	●	●	TNGA331-1NS0102510						
	-1NS0101505		●	●	●	●	-1NS0101505						
	-1NS0152520		●	●	●	●	-1NS0152520						
	TNGA 160408-1NS0102510		●	●	●	●	TNGA332-1NS0102510						
	-1NS0101505		●	●	●	●	-1NS0101505						
	-1NS0152520		●	●	●	●	-1NS0152520						
TNGA 160412-1NS0102510	●	●	●	●	TNGA333-1NS0102510								
-1NS0101505	●	●	●	●	-1NS0101505								
-1NS0152520	●	●	●	●	-1NS0152520								
	TNGA 160402-3NS0102510	SLST30S	●	●	●	●	TNGA33(0.5)-3NS0102510	SLST30S	9.525	3.81	4.76	0.2	3.0
	-3NS0101505		●	●	●	●	-3NS0101505						
	-3NS0152520		●	●	●	●	-3NS0152520						
	TNGA 160404-3NS0102510		●	●	●	●	TNGA331-3NS0102510						
	-3NS0101505		●	●	●	●	-3NS0101505						
	-3NS0152520		●	●	●	●	-3NS0152520						
	TNGA 160408-3NS0102510		●	●	●	●	TNGA332-3NS0102510						
	-3NS0101505		●	●	●	●	-3NS0101505						
	-3NS0152520		●	●	●	●	-3NS0152520						
TNGA 160412-3NS0102510	●	●	●	●	TNGA333-3NS0102510								
-3NS0101505	●	●	●	●	-3NS0101505								
-3NS0152520	●	●	●	●	-3NS0152520								
	TNGA 160402-6NS0102510	SLST30S	●	●	●	●	TNGA33(0.5)-6NS0102510	SLST30S	9.525	3.81	4.76	0.2	3.0
	-6NS0101505		●	●	●	●	-6NS0101505						
	-6NS0152520		●	●	●	●	-6NS0152520						
	TNGA 160404-6NS0102510		●	●	●	●	TNGA331-6NS0102510						
	-6NS0101505		●	●	●	●	-6NS0101505						
	-6NS0152520		●	●	●	●	-6NS0152520						
	TNGA 160408-6NS0102510		●	●	●	●	TNGA332-6NS0102510						
	-6NS0101505		●	●	●	●	-6NS0101505						
	-6NS0152520		●	●	●	●	-6NS0152520						
TNGA 160412-6NS0102510	●	●	●	●	TNGA333-6NS0102510								
-6NS0101505	●	●	●	●	-6NS0101505								
-6NS0152520	●	●	●	●	-6NS0152520								

示例 (Example) : 公制 ISO: TNGA 160408-6NS0102510SLST30S PNH1020
ANSI ANSI: TNGA332-6NS0102510SLST30S PNH1020



可修磨型刀片

PCBN Standard Inserts

编码细则请参考B01-B02页

The rule of insert code please refer to page B01-B02

VN

35° 菱形 • 负型 • 有孔

PCBN Negative Inserts



标准型	锋利型	增强型
S0102510	S0101505	S0152520
Standard cutting edge	Sharp cutting edge	Strong cutting edge

Shape 图示	公制代码 ISO	Tip Shape 刀片结构	H				英制代码 ANSI	Tip Shape 刀片结构	Dimensions in mm 刀片参数				
			PNH120	PNH1020	PNH2018	PNH3019			ic	Ød	s	r	la
	VNGA 160402-1NS0102510	SLST30S	●	●	●	●	VNGA 33(0.5)-1NS0102510	SLST30S	9.525	3.81	4.76	3.0	0.2
	-1NS0101505		●	●	●	●	-1NS0101505						0.4
	-1NS0152520		●	●	●	●	-1NS0152520						0.8
	VNGA 160404-1NS0102510		●	●	●	●	VNGA 331-1NS0102510						1.2
	-1NS0101505		●	●	●	●	-1NS0101505						
	-1NS0152520		●	●	●	●	-1NS0152520						
	VNGA 160408-1NS0102510		●	●	●	●	VNGA 332-1NS0102510						
	-1NS0101505		●	●	●	●	-1NS0101505						
	-1NS0152520		●	●	●	●	-1NS0152520						
	VNGA 160412-1NS0102510		●	●	●	●	VNGA 333-1NS0102510						
	-1NS0101505		●	●	●	●	-1NS0101505						
	-1NS0152520		●	●	●	●	-1NS0152520						
	VNGA 160402-2NS0102510	SLST30S	●	●	●	●	VNGA 33(0.5)-2NS0102510	SLST30S	9.525	3.81	4.76	3.0	0.2
	-2NS0101505		●	●	●	●	-2NS0101505						0.4
	-2NS0152520		●	●	●	●	-2NS0152520						0.8
	VNGA 160404-2NS0102510		●	●	●	●	VNGA 331-2NS0102510						1.2
	-2NS0101505		●	●	●	●	-2NS0101505						
	-2NS0152520		●	●	●	●	-2NS0152520						
	VNGA 160408-2NS0102510		●	●	●	●	VNGA 332-2NS0102510						
	-2NS0101505		●	●	●	●	-2NS0101505						
	-2NS0152520		●	●	●	●	-2NS0152520						
	VNGA 160412-2NS0102510		●	●	●	●	VNGA 333-2NS0102510						
	-2NS0101505		●	●	●	●	-2NS0101505						
	-2NS0152520		●	●	●	●	-2NS0152520						
	VNGA 160402-4NS0102510	SLST30S	●	●	●	●	VNGA 33(0.5)-4NS0102510	SLST30S	9.525	3.81	4.76	3.0	0.2
	-4NS0101505		●	●	●	●	-4NS0101505						0.4
	-4NS0152520		●	●	●	●	-4NS0152520						0.8
	VNGA 160404-4NS0102510		●	●	●	●	VNGA 331-4NS0102510						1.2
	-4NS0101505		●	●	●	●	-4NS0101505						
	-4NS0152520		●	●	●	●	-4NS0152520						
	VNGA 160408-4NS0102510		●	●	●	●	VNGA 332-4NS0102510						
	-4NS0101505		●	●	●	●	-4NS0101505						
	-4NS0152520		●	●	●	●	-4NS0152520						
	VNGA 160412-4NS0102510		●	●	●	●	VNGA 333-4NS0102510						
	-4NS0101505		●	●	●	●	-4NS0101505						
	-4NS0152520		●	●	●	●	-4NS0152520						

示例 (Example) : 公制 ISO: VNGA 160408-4NS0102510SLST30S PNH1020
 英制 ANSI: VNGA332-4NS0102510SLST30S PNH1020

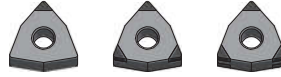
可修磨型刀片

PCBN Standard Inserts

WN

80° 六边形 • 负型 • 有孔

PCBN Negative Inserts



标准型	锋利型	增强型
S0102510	S0101505	S0152520
Standard cutting edge	Sharp cutting edge	Strong cutting edge

Shape 图示	公制代码 ISO	Tip Shape 刀片结构	H				英制代码 ANSI	Tip Shape 刀片结构	Dimensions in mm 刀片参数				
			PNH0120	PNH1020	PNH2018	PNH3019			ic	∅d	s	r	la
	WNGA080402-1NS0102510	SLST30S	●	●	●	●	WNGA43(0.5)-1NS0102510	SLST30S	12.7	5.16	4.76	0.2	3.0
	-1NS0101505		●	●	●	●	-1NS0101505						
	-1NS0152520		●	●	●	●	-1NS0152520						
	WNGA080404-1NS0102510		●	●	●	●	WNGA431-1NS0102510						
	-1NS0101505		●	●	●	●	-1NS0101505						
	-1NS0152520		●	●	●	●	-1NS0152520						
	WNGA080408-1NS0102510		●	●	●	●	WNGA432-1NS0102510						
	-1NS0101505		●	●	●	●	-1NS0101505						
	-1NS0152520		●	●	●	●	-1NS0152520						
WNGA080412-1NS0102510	●	●	●	●	WNGA433-1NS0102510								
-1NS0101505	●	●	●	●	-1NS0101505								
-1NS0152520	●	●	●	●	-1NS0152520								
	WNGA080402-3NS0102510	SLST30S	●	●	●	●	WNGA43(0.5)-3NS0102510	SLST30S	12.7	5.16	4.76	0.2	3.0
	-3NS0101505		●	●	●	●	-3NS0101505						
	-3NS0152520		●	●	●	●	-3NS0152520						
	WNGA080404-3NS0102510		●	●	●	●	WNGA431-3NS0102510						
	-3NS0101505		●	●	●	●	-3NS0101505						
	-3NS0152520		●	●	●	●	-3NS0152520						
	WNGA080408-3NS0102510		●	●	●	●	WNGA432-3NS0102510						
	-3NS0101505		●	●	●	●	-3NS0101505						
	-3NS0152520		●	●	●	●	-3NS0152520						
WNGA080412-3NS0102510	●	●	●	●	WNGA433-3NS0102510								
-3NS0101505	●	●	●	●	-3NS0101505								
-3NS0152520	●	●	●	●	-3NS0152520								
	WNGA080402-6NS0102510	SLST30S	●	●	●	●	WNGA43(0.5)-6NS0102510	SLST30S	12.7	5.16	4.76	0.2	3.0
	-6NS0101505		●	●	●	●	-6NS0101505						
	-6NS0152520		●	●	●	●	-6NS0152520						
	WNGA080404-6NS0102510		●	●	●	●	WNGA431-6NS0102510						
	-6NS0101505		●	●	●	●	-6NS0101505						
	-6NS0152520		●	●	●	●	-6NS0152520						
	WNGA080408-6NS0102510		●	●	●	●	WNGA432-6NS0102510						
	-6NS0101505		●	●	●	●	-6NS0101505						
	-6NS0152520		●	●	●	●	-6NS0152520						
WNGA080412-6NS0102510	●	●	●	●	WNGA433-6NS0102510								
-6NS0101505	●	●	●	●	-6NS0101505								
-6NS0152520	●	●	●	●	-6NS0152520								

示例 (Example) : 公制 ISO: WNGA080402-6NS0102510SLST30S PNH1020
 英制 ANSI: WNGA43(0.5)-6NS0102510SLST30S PNH1020



角逐行业巅峰 缔造世界名牌
Compete for the top Create Global Brand

沃尔德PCBN刀片系列

Worldia PCBN Inserts Series



常规型mini刀片

Mini Tipped PCBN
Inserts



贯穿型mini刀片

Mini Solid Tipped
PCBN Inserts



重切削型刀片

Heavy Cutting PCBN
Inserts



修光刃刀片

Wiper PCBN Inserts



断屑型刀片

Chip Breaker PCBN
Inserts

www.worldiatools.com

www.cuttingtoolchina.com

电话：+86-10-58411388-8088 传真：+86-10-58411388-8030
地址：河北省廊坊市大厂潮白河工业区工业二路东侧（065300）
E-mail：marketing@worldiatools.com

Tel：+86-10-58411388-8082 Fax：+86-10-58411388-8030
Add: No.2 Industry Road, Dachang Chaobaihe Industrial Park,
Langfang City, Hebei Province 065300, China
E-mail：marketing@worldiatools.com

