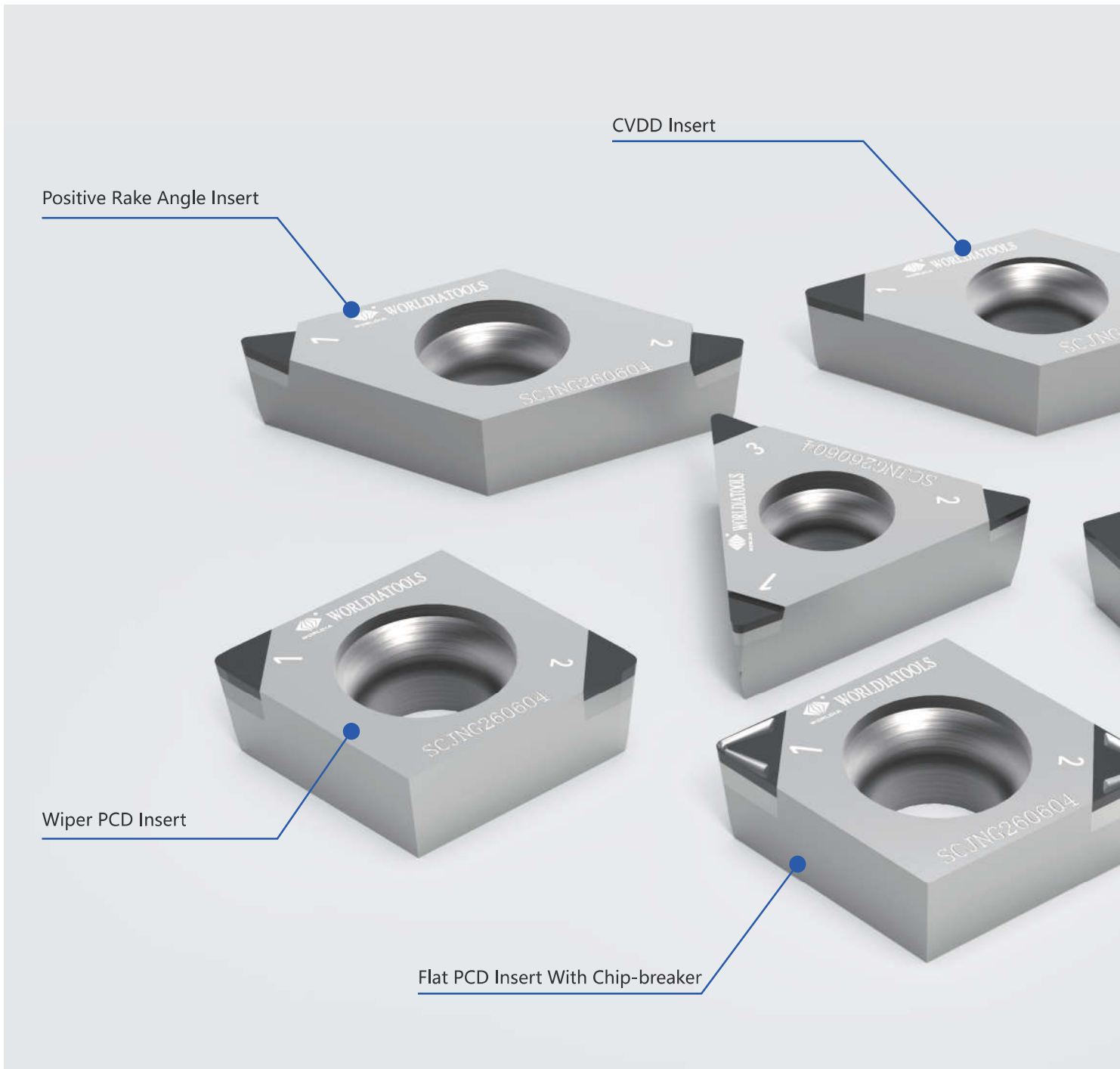


PCD/CVDD Inserts

北京沃尔德金刚石工具股份有限公司
BEIJING WORLDIA DIAMOND TOOLS CO.,LTD.



Main applications:

Flat PCD Insert: Suitable for a wide range of application from turning, milling to boring;

Positive Rake Angle Insert: sharp edge design which is for high roughness application requirements of turning, milling and boring;

Full Length Edge Insert: Chamfering, flat surface and bulge part cutting;

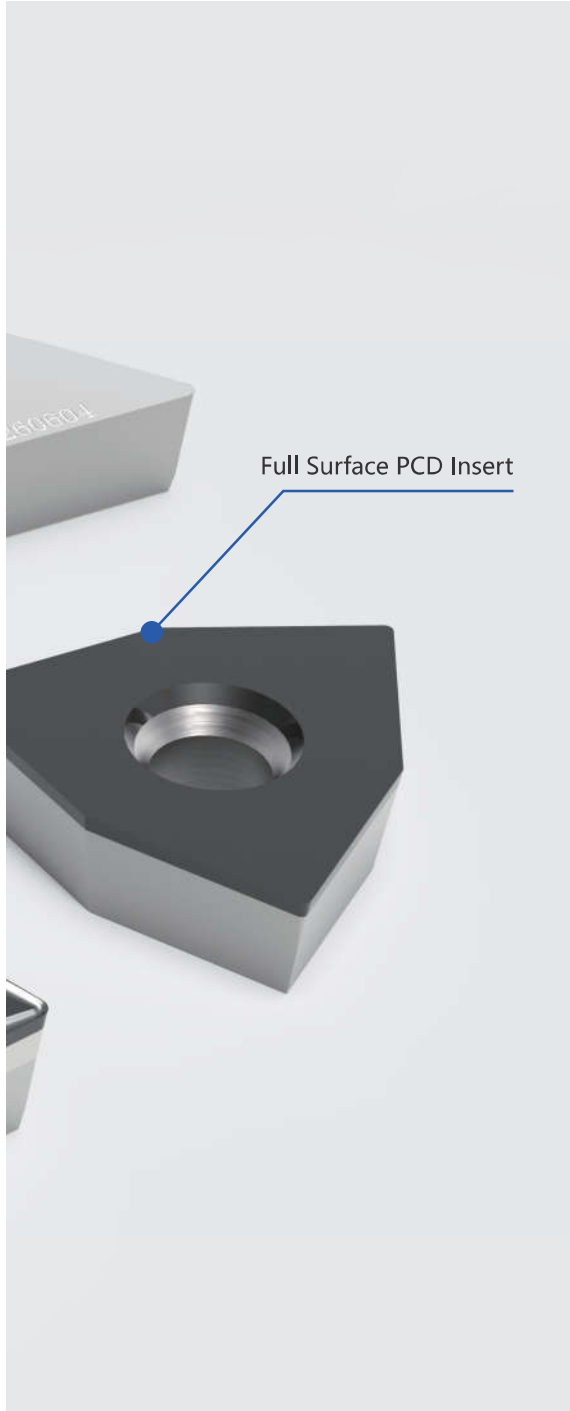
Wiper PCD Insert: for excellent surface with high roughness and high efficiency machining;

CVDD Insert: for high abrasive resistance and high efficiency machining;

PCD Insert with chip-breaker: high surface roughness required, prevent chip breaker scratched, which influence the on-line monitoring of fully automatic production line, and the manipulator; clamping, prevent wrapped chips damage the cutting tools abnormally. So it is easy to remove the chip during boring without damaging the cutting tool, holder and workpiece.

目录索引

| | |
|--|----|
| PCD/CVDD Material Introduction | 03 |
| PCD Insert with chip-breaker/ PCD Wiper Insert | 04 |
| Rule of PCD Insert Code | 05 |
| Specifications of PCD/CVDD Insert with Chip-breaker | 07 |
| Specifications of PCD/CVDD Wiper Insert | 13 |
| Specifications of Standard PCD/CVDD Insert | 15 |
| Technical Data | 33 |



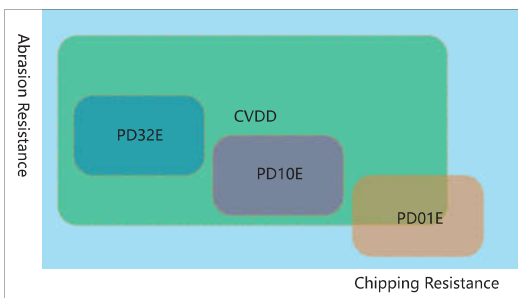
PCD Material Characteristics

According to grain size and features of diamond, four types of PCD material, i.e. PD 01E\PD10E\PD32E\CVDD are listed as below.

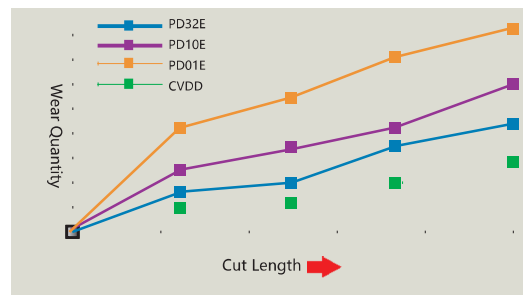
Introduction

| Material | Grade size(μm) | Feature | Application |
|----------|-----------------------------|---|---|
| PD01E | 1 | PD01E fine grain size PCD material(1 μm) is suitable for mirror finishing applications. Its high impact resistance and high abrasive resistance are no less than that of rough grade of PCD . | PD01E has excellent chip resistance is suitable for the roughing and interrupt cutting aluminium alloys. This grade is also commonly used for non-ferrous finishing applications. Other successful applications include machining of wood, MDF. |
| PD10E | 10 | PD10E is the universal grade in the market. It's the first choice for many applications where a good balance of toughness and wear resistance are required. | This grade is commonly used for non-ferrous finishing applications. Other successful applications include machining of wood, MDF. The machining of low-medium content silicon aluminium alloys, carbide, hard rubber, graphite and so on. |
| PD32E | 2~30 | PD32E has a unique combination of wear resistance, edge strength and edge quality. It contains a carefully selected mix of micron diamond (between 2 - 30 μm). The combination of these particle sizes and a specifically developed high pressure sintering process produces a structure with extreme abrasion resistance and good thermal stability. | Application areas include the machining of abrasive workpieces such as MMC, high silicon aluminium alloys as well as for the machining of carbide and carbide, hard rubber, graphite and other applications. |
| CVDD | — | CVDD is a pure carbon material without binder with extreme abrasion resistance and good thermal suitability. Due to its Perfect cutting edge suitable for applications where mirror finishes are required. | Application areas include the machining of abrasive workpieces such as MMC, high silicon aluminium alloys as well as for the machining of carbide, hard rubber, graphite and other applications. |

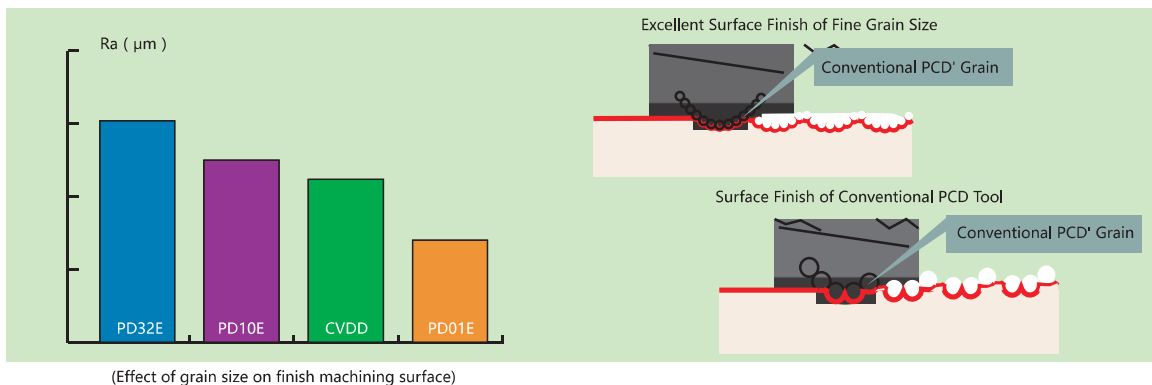
Micro-Structure of PCD Materials



Differences in Abrasive-resistance Among Various Grade of PCD Materials



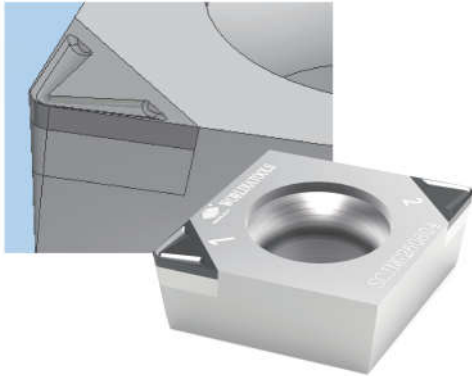
PCD Grain Size Affects Roughness of Workpiece's Surface



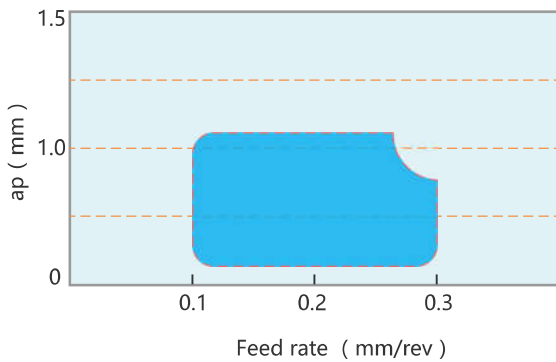
PCD Insert with Chip-breaker/ PCD Wiper Insert

■ PCD Insert with chip-breaker(CBC1)

Excellent chip breaking in finishing machining



Scope of Application



Material : A6061

Cutting conditions : $V_c=400\text{m/min}$ $f=0.1\text{mm/rev}$ $a_p=0.2\text{mm}$

Insert type : CCGW09T308



Material : A6061

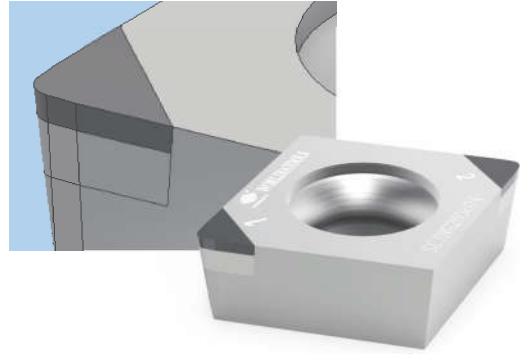
Cutting conditions : $V_c=400\text{m/min}$ $f=0.1\text{mm/rev}$ $a_p=0.5\text{mm}$

Insert type : CCGW09T308



■ PCD Wiper Insert(WG)

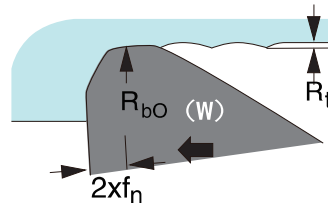
Improve the quality of workpiece surface or processing efficiency



Effect of Wiper Insert

With the same R_t ,

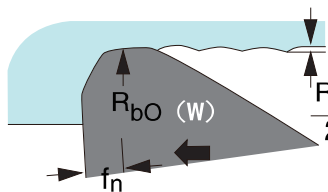
Wiper inserts increase double feed rate($2xf_n$).



High Efficiency

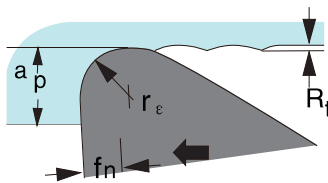
Under the same f_n ,

Wiper inserts improve the surface quality($\frac{R_t}{2}$).



High Quality Surface

Standard corner radius



Rule of PCD Insert Code

| | | | | | | | | | | | | | | | | | |
|------|---|---|---|---|----|-------|----|---|---|---|----|---|----|----|----|----|---|
| ISO | C | C | G | W | 09 | T3 | 04 | 1 | N | P | 00 | P | 07 | CB | ST | 30 | S |
| | ① | ② | ③ | ④ | ⑤ | ⑥ | ⑦ | ⑧ | ⑨ | ⑩ | ⑪ | ⑫ | ⑬ | ⑭ | ⑮ | ⑯ | ⑰ |
| ANSI | C | C | G | W | 3 | (2.5) | 1 | 1 | N | P | 00 | P | 07 | CB | ST | 30 | S |
| | ① | ② | ③ | ④ | ⑤ | ⑥ | ⑦ | ⑧ | ⑨ | ⑩ | ⑪ | ⑫ | ⑬ | ⑭ | ⑮ | ⑯ | ⑰ |

| 1 Shape | | | | | | | | | | | | | | | | | | | | | | | |
|---------|-----|------|---|---|-----|---|-----|---|-----|---|-----|---|-----|---|-----|---|-----|---|-----|---|-----|---|-----|
| | H | 120° | <table border="1"> <tr><td>C</td><td>80°</td></tr> <tr><td>D</td><td>55°</td></tr> <tr><td>E</td><td>75°</td></tr> <tr><td>M</td><td>86°</td></tr> <tr><td>V</td><td>35°</td></tr> <tr><td>W</td><td>80°</td></tr> <tr><td>L</td><td>90°</td></tr> <tr><td>A</td><td>85°</td></tr> <tr><td>B</td><td>82°</td></tr> <tr><td>K</td><td>55°</td></tr> </table> | C | 80° | D | 55° | E | 75° | M | 86° | V | 35° | W | 80° | L | 90° | A | 85° | B | 82° | K | 55° |
| C | 80° | | | | | | | | | | | | | | | | | | | | | | |
| D | 55° | | | | | | | | | | | | | | | | | | | | | | |
| E | 75° | | | | | | | | | | | | | | | | | | | | | | |
| M | 86° | | | | | | | | | | | | | | | | | | | | | | |
| V | 35° | | | | | | | | | | | | | | | | | | | | | | |
| W | 80° | | | | | | | | | | | | | | | | | | | | | | |
| L | 90° | | | | | | | | | | | | | | | | | | | | | | |
| A | 85° | | | | | | | | | | | | | | | | | | | | | | |
| B | 82° | | | | | | | | | | | | | | | | | | | | | | |
| K | 55° | | | | | | | | | | | | | | | | | | | | | | |
| | O | 135° | | | | | | | | | | | | | | | | | | | | | |
| | P | 108° | | | | | | | | | | | | | | | | | | | | | |
| | R | | | | | | | | | | | | | | | | | | | | | | |
| | S | 90° | | | | | | | | | | | | | | | | | | | | | |
| | T | 60° | | | | | | | | | | | | | | | | | | | | | |

| 3 Tolerance-ISO | Tolerance-ANSI | | | | | | | |
|-----------------|----------------|-------------|--------|-------------|------|------------|------------|-------|
| | Code | inch(mm) | | | Code | inch | | |
| | | m | s | IC | | m | ic | s |
| | C | ±0.013 | ±0.025 | ±0.025 | C | ±.0005 | ±.001 | ±.001 |
| | H | ±0.013 | ±0.025 | ±0.013 | H | ±.0005 | ±.0005 | ±.001 |
| | E | ±0.025 | ±0.025 | ±0.025 | E | ±.001 | ±.001 | ±.001 |
| | G | ±0.025 | ±0.13 | ±0.025 | G | ±.001 | ±.001 | ±.005 |
| | K | ±0.013 | ±0.025 | ±0.05~±0.13 | K | ±.0005 | ±.002-.005 | ±.001 |
| | M | ±0.08~±0.18 | ±0.13 | ±0.05~±0.13 | M | ±.002-.005 | ±.002-.005 | ±.005 |
| | U | ±0.13~±0.38 | ±0.13 | ±0.08~±0.25 | U | ±.005-.012 | ±.005-.010 | ±.005 |

| 2 Clearance Angle | | | |
|-------------------|---|-----|--|
| | A | 3° | |
| | B | 5° | |
| | C | 7° | |
| | D | 15° | |
| | E | 20° | |
| | F | 25° | |
| | G | 30° | |
| | N | 0° | |
| | P | 11° | |
| | O | 8° | |

| 4 Standard, Chipbreaker | | | |
|-------------------------|---|-------|---|
| | N | | |
| | G | | |
| | B | | |
| | R | | |
| | W | | |
| | H | | |
| | F | | |
| | T | | |
| | C | | |
| | A | | |
| | Q | | |
| | J | | |
| | M | | |
| | U | Other | X |

| 5 Inscribed Circle Dia. | | | | | | | |
|-------------------------|----|----|----|------|----|----|--------|
| ISO | | | | ANSI | | | |
| C | D | R | S | T | V | W | mm |
| S4 | 04 | 03 | 03 | 06 | - | - | 3.97 |
| 04 | 05 | 04 | 04 | 08 | 08 | S3 | 4.76 |
| 05 | 06 | 05 | 05 | 09 | 09 | 03 | 5.56 |
| - | - | 06 | - | - | - | - | 6 |
| 06 | 07 | 06 | 06 | 11 | 11 | 04 | 6.35 |
| 08 | 09 | 07 | 07 | 13 | 13 | 05 | 7.94 |
| - | - | 08 | - | - | - | - | 8 |
| 09 | 11 | 09 | 09 | 16 | 16 | 06 | 9.525 |
| - | - | 10 | - | - | - | - | 10 |
| - | - | 12 | - | - | - | - | 12 |
| 12 | 15 | 12 | 12 | 22 | 22 | 08 | 12.7 |
| 16 | 19 | 15 | 15 | 27 | 27 | 10 | 15.875 |
| - | - | 16 | - | - | - | - | 16 |
| 19 | 23 | 19 | 19 | 33 | 33 | 13 | 19.05 |
| - | - | 20 | - | - | - | - | 20 |
| 22 | 27 | 22 | 22 | 38 | 38 | 15 | 22.225 |
| - | - | 25 | - | - | - | - | 25 |
| 25 | 31 | 25 | 25 | 44 | 44 | 17 | 25.4 |
| 32 | 38 | 31 | 31 | 54 | 54 | 21 | 31.75 |
| - | - | 32 | - | - | - | - | 32 |
| | | | | | | | inch |
| | | | | | | | (1.2) |
| | | | | | | | (1.5) |
| | | | | | | | (1.8) |
| | | | | | | | 2 |
| | | | | | | | (2.5) |
| | | | | | | | 3 |
| | | | | | | | 4 |
| | | | | | | | 5 |
| | | | | | | | 6 |
| | | | | | | | 7 |
| | | | | | | | 8 |
| | | | | | | | 10 |
| | | | | | | | 1-1/4 |
| | | | | | | | |

| 6 Thickness | | | |
|-------------|-------|-------|------|
| ISO | | ANSI | |
| Code | Size | Code | Size |
| S | mm | S | inch |
| 01 | 1.59 | 1 | 1/16 |
| 02 | 2.38 | (1.5) | 3/32 |
| T2 | 2.78 | - | - |
| 03 | 3.18 | 2 | 1/8 |
| T3 | 3.97 | (2.5) | 5/32 |
| 04 | 4.76 | 3 | 3/16 |
| 05 | 5.56 | (3.5) | 7/32 |
| 06 | 6.35 | 4 | 1/4 |
| 07 | 7.94 | 5 | 5/16 |
| 09 | 9.525 | 6 | 3/8 |

| 7 Nose radius | | | |
|----------------|------|----------------|----------|
| ISO | | ANSI | |
| Code | Size | Code | Size |
| R _c | mm | R _c | inch |
| 00 | | 00 | .000 |
| 003 | 0.03 | (0.1) | .001 |
| 01 | 0.1 | (0.2) | .004 |
| 02 | 0.2 | (0.5) | .008 |
| 04 | 0.4 | 1 | 1/64 |
| 08 | 0.8 | 2 | 1/32 |
| 12 | 1.2 | 3 | 3/64 |
| 16 | 1.6 | 4 | 1/16 |
| 20 | 2.0 | 5 | 5/64 |
| 24 | 2.4 | 6 | 3/32 |
| 28 | 2.8 | 7 | 7/64 |
| 32 | 3.2 | 8 | 1/8 |
| M0 | | 0 | circular |

Rule of PCD Insert Code

| 8 Edges | | | | | | |
|---------|--------|---------|---------|---------|---------|---------|
| Code | 1 | 2 | 3 | 4 | 6 | 8 |
| notes | 1 edge | 2 edges | 3 edges | 4 edges | 6 edges | 8 edges |

| 9 Cutting Direction | | | |
|---------------------|---|---|---|
| Code | R | L | N |
| notes | R | L | N |

| 10 Positive Rake Description | | |
|------------------------------|--|----------------|
| P | | M |
| Positive Positive | | Negative angle |
| | | |

| 11 Positive Rake Angle | | | | | |
|------------------------|------------|----|----|----|----|
| Code | α | 00 | 03 | 05 | 10 |
| Size | $^{\circ}$ | 0 | 3 | 5 | 10 |

| 12 Negative Clearance | |
|-----------------------|--|
| P | |
| Positive Clearance | |
| | |
| M | |
| Negative Clearance | |
| | |

| 13 Clearance Angle | | | | | | | | | | | | | |
|--------------------|------------|----|----|----|----|----|----|----|----|----|----|----|----|
| Code | β | 00 | 01 | 02 | 03 | 05 | 07 | 11 | 15 | 20 | 25 | 30 | 35 |
| Size | $^{\circ}$ | 0 | 1 | 2 | 3 | 5 | 7 | 11 | 15 | 20 | 25 | 30 | 35 |

| 14 Insert type | | | | | |
|----------------|----------------------|---------------------|-----------|-------------------------|--------------------|
| | | | | | |
| SF | SW | SL | SS | CB | CS |
| Full Face | Solid Tipped Corners | Solid Tipped Corner | Solid PCD | Standard Tipped Corners | Standard Full Edge |

| 15 Cutting Edge Design | | | | |
|------------------------|-------|---------|-----------------|-----|
| ST | WG | WG00 | CBC1 | --- |
| Nose Radius | Wiper | 0°Wiper | C1 Chip Breaker | --- |

| 16 Cutting Edge Length | | | | | | |
|------------------------|-----|-----|-----|-----|-----|-----|
| Code | 25 | 30 | 35 | 40 | 45 | ... |
| Nose Radius | 2.8 | 3.0 | 3.5 | 4.0 | 4.5 | ... |

| 17 Surface Treatment | | | |
|----------------------|----------|--|--|
| S | Uncoated | | |

Specifications of PCD/CVDD Insert with Chip-breaker

CC

80° PCBN Negative Inserts



| Shape | ISO | Tip Shape | N | | | | ANSI | Tip Shape | Dimensions in mm | | | | |
|-------|----------------------|-----------|-------|-------|-------|------|-----------------------------|-----------|------------------|-----|------|-----|-----|
| | | | PD01E | PD10E | PD32E | CVDD | | | ic | Ød | s | r | la |
| | CCGT060202-1N P00P07 | CBCBC125S | ● | ● | ● | | CCGT2(1.5)(0.5)-1N P00P07 | CBCBC125S | 6.35 | 2.8 | 2.38 | 0.2 | 2.5 |
| | CCGT060204-1N P00P07 | | ● | ● | ● | | CCGT2(1.5)1-1N P00P07 | | | | | 0.4 | |
| | CCGT060202-1N P00P07 | SLCBC125S | | | | | ● CCGT2(1.5)(0.5)-1N P00P07 | SLCBC125S | 6.35 | 2.8 | 2.38 | 0.2 | 2.5 |
| | CCGT060204-1N P00P07 | | | | | | ● CCGT2(1.5)1-1N P00P07 | | | | | 0.4 | |
| | CCGT060202-2N P00P07 | CBCBC125S | ● | ● | ● | | CCGT2(1.5)(0.5)-2N P00P07 | CBCBC125S | 6.35 | 2.8 | 2.38 | 0.2 | 2.5 |
| | CCGT060204-2N P00P07 | | ● | ● | ● | | CCGT2(1.5)1-2N P00P07 | | | | | 0.4 | |

CC

80° PCBN Negative Inserts



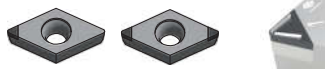
| Shape | ISO | Tip Shape | N | | | | ANSI | Tip Shape | Dimensions in mm | | | | |
|-------|----------------------|-----------|-------|-------|-------|------|-----------------------------|-----------|------------------|-----|------|-----|-----|
| | | | PD01E | PD10E | PD32E | CVDD | | | ic | Ød | s | r | la |
| | CCGT09T302-1N P00P07 | CBCBC125S | ● | ● | ● | | CCGT3(2.5)(0.5)-1N P00P07 | CBCBC125S | 9.525 | 4.4 | 3.97 | 0.2 | 2.5 |
| | CCGT09T304-1N P00P07 | | ● | ● | ● | | CCGT3(2.5)1-1N P00P07 | | | | | 0.4 | |
| | CCGT09T308-1N P00P07 | | ● | ● | ● | | CCGT3(2.5)2-1N P00P07 | | | | | 0.8 | |
| | CCGT09T302-1N P00P07 | SLCBC125S | | | | | ● CCGT3(2.5)(0.5)-1N P00P07 | SLCBC125S | 9.525 | 4.4 | 3.97 | 0.2 | 2.5 |
| | CCGT09T304-1N P00P07 | | | | | | ● CCGT3(2.5)1-1N P00P07 | | | | | 0.4 | |
| | CCGT09T308-1N P00P07 | | | | | | ● CCGT3(2.5)2-1N P00P07 | | | | | 0.8 | |
| | CCGT09T302-2N P00P07 | CBCBC125S | ● | ● | ● | | CCGT3(2.5)(0.5)-2N P00P07 | CBCBC125S | 9.525 | 4.4 | 3.97 | 0.2 | 2.5 |
| | CCGT09T304-2N P00P07 | | ● | ● | ● | | CCGT3(2.5)1-2N P00P07 | | | | | 0.4 | |
| | CCGT09T308-2N P00P07 | | ● | ● | ● | | CCGT3(2.5)2-2N P00P07 | | | | | 0.8 | |

Examples: ISO: CCGT09T302-1NP00P07CBCBC125S PD01E
 ANSI: CCGT3(2.5)(0.5)-1NP00P07CBCBC125S PD01E

Specifications of PCD/CVDD Insert with Chip-breaker

DC

55° PCBN Negative Inserts



| Shape | ISO | Tip Shape | N | | | | ANSI | Tip Shape | Dimensions in mm | | | | |
|-------|----------------------|-----------|-------|-------|-------|------|---------------------------|-----------|------------------|-----|------|-----|-----|
| | | | PD01E | PD10E | PD32E | CVDD | | | ic | Ød | s | r | la |
| | DCGT070202-1N P00P07 | CBCBC125S | ● | ● | ● | | DCGT2(1.5)(0.5)-1N P00P07 | CBCBC125S | 6.35 | 2.8 | 2.38 | 0.2 | 2.5 |
| | DCGT070204-1N P00P07 | | ● | ● | ● | | DCGT2(1.5)1-1N P00P07 | | | | | 0.4 | |
| | DCGT070202-1N P00P07 | SLCBC125S | | | | ● | DCGT2(1.5)(0.5)-1N P00P07 | SLCBC125S | 6.35 | 2.8 | 2.38 | 0.2 | 2.5 |
| | DCGT070204-1N P00P07 | | | | | ● | DCGT2(1.5)1-1N P00P07 | | | | | 0.4 | |
| | DCGT070202-2N P00P07 | CBCBC125S | ● | ● | ● | | DCGT2(1.5)(0.5)-2N P00P07 | CBCBC125S | 6.35 | 2.8 | 2.38 | 0.2 | 2.5 |
| | DCGT070204-2N P00P07 | | ● | ● | ● | | DCGT2(1.5)1-2N P00P07 | | | | | 0.4 | |

DC

55° PCBN Negative Inserts



| Shape | ISO | Tip Shape | N | | | | ANSI | Tip Shape | Dimensions in mm | | | | |
|-------|----------------------|-----------|-------|-------|-------|------|---------------------------|-----------|------------------|-----|------|-----|-----|
| | | | PD01E | PD10E | PD32E | CVDD | | | ic | Ød | s | r | la |
| | DCGT11T302-1N P00P07 | CBCBC125S | ● | ● | ● | | DCGT3(2.5)(0.5)-1N P00P07 | CBCBC125S | 9.525 | 4.4 | 3.97 | 0.2 | 2.5 |
| | DCGT11T304-1N P00P07 | | ● | ● | ● | | DCGT3(2.5)1-1N P00P07 | | | | | 0.4 | |
| | DCGT11T308-1N P00P07 | | ● | ● | ● | | DCGT3(2.5)2-1N P00P07 | | | | | 0.8 | |
| | DCGT11T302-1N P00P07 | SLCBC125S | | | | ● | DCGT3(2.5)(0.5)-1N P00P07 | SLCBC125S | 9.525 | 4.4 | 3.97 | 0.2 | 2.5 |
| | DCGT11T304-1N P00P07 | | | | | ● | DCGT3(2.5)1-1N P00P07 | | | | | 0.4 | |
| | DCGT11T308-1N P00P07 | | | | | ● | DCGT3(2.5)2-1N P00P07 | | | | | 0.8 | |
| | DCGT11T302-2N P00P07 | CBCBC125S | ● | ● | ● | | DCGT3(2.5)(0.5)-2N P00P07 | CBCBC125S | 9.525 | 4.4 | 3.97 | 0.2 | 2.5 |
| | DCGT11T304-2N P00P07 | | ● | ● | ● | | DCGT3(2.5)1-2N P00P07 | | | | | 0.4 | |
| | DCGT11T308-2N P00P07 | | ● | ● | ● | | DCGT3(2.5)2-2N P00P07 | | | | | 0.8 | |

Examples: ISO: DCGT11T302-1N P00P07CBCBC125S PD01E
 ANSI: DCGT3(2.5)(0.5)-1N P00P07CBCBC125S PD01E

Specifications of PCD/CVDD Insert with Chip-breaker

TC

60° PCBN Negative Inserts



| Shape | ISO | Tip Shape | N | | | | ANSI | Tip Shape | Dimensions in mm | | | | |
|-------|----------------------|-----------|-------|-------|-------|------|-------------------------------|-----------|------------------|-----|------|-----|-----|
| | | | PD01E | PD10E | PD32E | CVDD | | | ic | Ød | s | r | la |
| | TCGT080202-1N P00P07 | CBCBC125S | ● | ● | ● | | TCGT(1.5)(1.5)(0.5)-1N P00P07 | CBCBC125S | 4.76 | 2.4 | 2.38 | 0.2 | 2.5 |
| | TCGT080204-1N P00P07 | | ● | ● | ● | | TCGT(1.5)(1.5)1-1N P00P07 | | | | | 0.4 | |
| | TCGT080202-1N P00P07 | SLCBC125S | | | | ● | TCGT(1.5)(1.5)(0.5)-1N P00P07 | SLCBC125S | 4.76 | 2.4 | 2.38 | 0.2 | 2.5 |
| | TCGT080204-1N P00P07 | | | | | ● | TCGT(1.5)(1.5)1-1N P00P07 | | | | | 0.4 | |
| | TCGT080202-3N P00P07 | CBCBC125S | ● | ● | ● | | TCGT(1.5)(1.5)(0.5)-3N P00P07 | CBCBC125S | 4.76 | 2.4 | 2.38 | 0.2 | 2.5 |
| | TCGT080204-3N P00P07 | | ● | ● | ● | | TCGT(1.5)(1.5)1-3N P00P07 | | | | | 0.4 | |

TC

60° PCBN Negative Inserts



| Shape | ISO | Tip Shape | N | | | | ANSI | Tip Shape | Dimensions in mm | | | | |
|-------|----------------------|-----------|-------|-------|-------|------|-----------------------|-----------|------------------|-----|------|-----|-----|
| | | | PD01E | PD10E | PD32E | CVDD | | | ic | Ød | s | r | la |
| | TCGT110302-1N P00P07 | CBCBC125S | ● | ● | ● | | TCGT22(0.5)-1N P00P07 | CBCBC125S | 6.35 | 2.8 | 3.18 | 0.2 | 2.5 |
| | TCGT110304-1N P00P07 | | ● | ● | ● | | TCGT22 1-1N P00P07 | | | | | 0.4 | |
| | TCGT110302-1N P00P07 | SLCBC125S | | | | ● | TCGT22(0.5)-1N P00P07 | SLCBC125S | 6.35 | 2.8 | 3.18 | 0.2 | 2.5 |
| | TCGT110304-1N P00P07 | | | | | ● | TCGT22 1-1N P00P07 | | | | | 0.4 | |
| | TCGT110302-3N P00P07 | CBCBC125S | ● | ● | ● | | TCGT22(0.5)-3N P00P07 | CBCBC125S | 6.35 | 2.8 | 3.18 | 0.2 | 2.5 |
| | TCGT110304-3N P00P07 | | ● | ● | ● | | TCGT22 1-1N P00P07 | | | | | 0.4 | |

Examples: ISO: TCGT110302-1N P00P07CBCBC125S PD01E
 ANSI: TCGT22(0.5)-1N P00P07CBCBC125S PD01E

Specifications of PCD/CVDD Insert with Chip-breaker

TC

60° PCBN Negative Inserts



| Shape | ISO | Tip Shape | N | | | | ANSI | Tip Shape | Dimensions in mm | | | | |
|-------|----------------------|-----------|-------|-------|-------|------|-----------------------|-----------|------------------|-----|------|-----|-----|
| | | | PD01E | PD10E | PD32E | CVDD | | | ic | Ød | s | r | la |
| | TCGT160402-1N P00P07 | CBCBC125S | ● | ● | ● | | TCGT33(0.5)-1N P00P07 | CBCBC125S | 9.525 | 4.4 | 4.76 | 0.2 | 2.5 |
| | TCGT160404-1N P00P07 | | ● | ● | ● | | TCGT331-1N P00P07 | | | | | 0.4 | |
| | TCGT160408-1N P00P07 | | ● | ● | ● | | TCGT332-1N P00P07 | | | | | 0.8 | |
| | TCGT160402-1N P00P07 | SLCBC125S | | | | ● | TCGT33(0.5)-1N P00P07 | SLCBC125S | 9.525 | 4.4 | 4.76 | 0.2 | 2.5 |
| | TCGT160404-1N P00P07 | | | | | ● | TCGT331-1N P00P07 | | | | | 0.4 | |
| | TCGT160408-1N P00P07 | | | | | ● | TCGT332-1N P00P07 | | | | | 0.8 | |
| | TCGT160402-3N P00P07 | CBCBC125S | ● | ● | ● | | TCGT33(0.5)-3N P00P07 | CBCBC125S | 9.525 | 4.4 | 4.76 | 0.2 | 2.5 |
| | TCGT160404-3N P00P07 | | ● | ● | ● | | TCGT331-3N P00P07 | | | | | 0.4 | |
| | TCGT160408-3N P00P07 | | ● | ● | ● | | TCGT332-3N P00P07 | | | | | 0.8 | |

TP

60° PCBN Negative Inserts



| Shape | ISO | Tip Shape | N | | | | ANSI | Tip Shape | Dimensions in mm | | | | |
|-------|----------------------|-----------|-------|-------|-------|------|-------------------------------|-----------|------------------|-----|------|-----|-----|
| | | | PD01E | PD10E | PD32E | CVDD | | | ic | Ød | s | r | la |
| | TPGT080202-1N P00P11 | CBCBC125S | ● | ● | ● | | TPGT(1.5)(1.5)(0.5)-1N P00P11 | CBCBC125S | 4.76 | 2.4 | 2.38 | 0.2 | 2.5 |
| | TPGT080204-1N P00P11 | | ● | ● | ● | | TPGT(1.5)(1.5)1-1N P00P11 | | | | | 0.4 | |
| | TPGT080202-1N P00P11 | SLCBC125S | | | | ● | TPGT(1.5)(1.5)(0.5)-1N P00P11 | SLCBC125S | 4.76 | 2.4 | 2.38 | 0.2 | 2.5 |
| | TPGT080204-1N P00P11 | | | | | ● | TPGT(1.5)(1.5)1-1N P00P11 | | | | | 0.4 | |
| | TPGT080202-3N P00P11 | CBCBC125S | ● | ● | ● | | TPGT(1.5)(1.5)(0.5)-3N P00P11 | CBCBC125S | 4.76 | 2.4 | 2.38 | 0.2 | 2.5 |
| | TPGT080204-3N P00P11 | | ● | ● | ● | | TPGT(1.5)(1.5)1-3N P00P11 | | | | | 0.4 | |

Examples: ISO: TPGT080202-1N P00P11 CBCBC125S PD01E
 ANSI: TPGT(1.5)(1.5)(0.5)-1N P00P11 CBCBC125S PD01E

Specifications of PCD/CVDD Insert with Chip-breaker

TP

60° PCBN Negative Inserts



| Shape | ISO | Tip Shape | N | | | | ANSI | Tip Shape | Dimensions in mm | | | | |
|-------|----------------------|-----------|-------|-------|-------|------|-----------------------|-----------|------------------|-----|------|-----|-----|
| | | | PD01E | PD10E | PD32E | CVDD | | | ic | Ød | s | r | la |
| | TPGT110302-1N P00P11 | CBCBC125S | ● | ● | ● | | TPGT22(0.5)-1N P00P11 | CBCBC125S | 6.35 | 3.3 | 3.18 | 0.2 | 2.5 |
| | TPGT110304-1N P00P11 | | ● | ● | ● | | TPGT221-1N P00P11 | | | | | 0.4 | |
| | TPGT110302-1N P00P11 | SLCBC125S | | | | ● | TPGT22(0.5)-1N P00P11 | SLCBC125S | 6.35 | 3.3 | 3.18 | 0.2 | 2.5 |
| | TPGT110304-1N P00P11 | | | | | ● | TPGT221-1N P00P11 | | | | | 0.4 | |
| | TPGT110302-3N P00P11 | CBCBC125S | ● | ● | ● | | TPGT22(0.5)-3N P00P11 | CBCBC125S | 6.35 | 3.3 | 3.18 | 0.2 | 2.5 |
| | TPGT110304-3N P00P11 | | ● | ● | ● | | TPGT221-1N P00P11 | | | | | 0.4 | |

TP

60° PCBN Negative Inserts



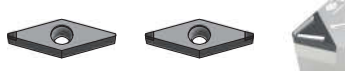
| Shape | ISO | Tip Shape | N | | | | ANSI | Tip Shape | Dimensions in mm | | | | |
|-------|----------------------|-----------|-------|-------|-------|------|-----------------------|-----------|------------------|-----|------|-----|-----|
| | | | PD01E | PD10E | PD32E | CVDD | | | ic | Ød | s | r | la |
| | TPGT160402-1N P00P11 | CBCBC125S | ● | ● | ● | | TPGT33(0.5)-1N P00P11 | CBCBC125S | 9.525 | 4.4 | 4.76 | 0.2 | 2.5 |
| | TPGT160404-1N P00P11 | | ● | ● | ● | | TPGT331-1N P00P11 | | | | | 0.4 | |
| | TPGT160408-1N P00P11 | | ● | ● | ● | | TPGT332-1N P00P11 | | | | | 0.8 | |
| | TPGT160402-1N P00P11 | SLCBC125S | | | | ● | TPGT33(0.5)-1N P00P11 | SLCBC125S | 9.525 | 4.4 | 4.76 | 0.2 | 2.5 |
| | TPGT160404-1N P00P11 | | | | | ● | TPGT331-1N P00P11 | | | | | 0.4 | |
| | TPGT160408-1N P00P11 | | | | | ● | TPGT332-1N P00P11 | | | | | 0.8 | |
| | TPGT160402-3N P00P11 | CBCBC125S | ● | ● | ● | | TPGT33(0.5)-3N P00P11 | CBCBC125S | 9.525 | 4.4 | 4.76 | 0.2 | 2.5 |
| | TPGT160404-3N P00P11 | | ● | ● | ● | | TPGT331-3N P00P11 | | | | | 0.4 | |
| | TPGT160408-3N P00P11 | | ● | ● | ● | | TPGT332-3N P00P11 | | | | | 0.8 | |

Examples: ISO: TPGT160402-1N P00P11 | CBCBC125S PD01E
 ANSI: TPGT33(0.5)-1N P00P11 | CBCBC125S PD01E

Specifications of PCD/CVDD Insert with Chip-breaker

VC

35° PCBN Negative Inserts



| Shape | ISO | Tip Shape | N | | | | ANSI | Tip Shape | Dimensions in mm | | | | |
|-------|----------------------|-----------|-------|-------|-------|------|-----------------------|-----------|------------------|-----|------|-----|-----|
| | | | PD01E | PD10E | PD32E | CVDD | | | ic | ∅d | s | r | la |
| | VCGT110302-1N P00P07 | CBCBC130S | ● | ● | ● | | VCGT22(0.5)-1N P00P07 | CBCBC130S | 6.35 | 3.3 | 3.18 | 0.2 | 3.0 |
| | VCGT110304-1N P00P07 | | ● | ● | ● | | VCGT221-1N P00P07 | | | | | 0.4 | |
| | VCGT110302-1N P00P07 | SLCBC130S | | | | ● | VCGT22(0.5)-1N P00P07 | SLCBC130S | 6.35 | 3.3 | 3.18 | 0.2 | 3.0 |
| | VCGT110304-1N P00P07 | | | | | ● | VCGT221-1N P00P07 | | | | | 0.4 | |
| | VCGT110302-3N P00P07 | CBCBC130S | ● | ● | ● | | VCGT22(0.5)-3N P00P07 | CBCBC130S | 6.35 | 3.3 | 3.18 | 0.2 | 3.0 |
| | VCGT110304-3N P00P07 | | ● | ● | ● | | VCGT221-3N P00P07 | | | | | 0.4 | |

VC

35° PCBN Negative Inserts



| Shape | ISO | Tip Shape | N | | | | ANSI | Tip Shape | Dimensions in mm | | | | |
|-------|----------------------|-----------|-------|-------|-------|------|-----------------------|-----------|------------------|-----|------|-----|-----|
| | | | PD01E | PD10E | PD32E | CVDD | | | ic | ∅d | s | r | la |
| | VCGT160402-1N P00P07 | CBCBC130S | ● | ● | ● | | VCGT33(0.5)-1N P00P07 | CBCBC130S | 9.525 | 4.4 | 4.76 | 0.2 | 3.0 |
| | VCGT160404-1N P00P07 | | ● | ● | ● | | VCGT331-1N P00P07 | | | | | 0.4 | |
| | VCGT160408-1N P00P07 | | ● | ● | ● | | VCGT332-1N P00P07 | | | | | 0.8 | |
| | VCGT160402-1N P00P07 | SLCBC130S | | | | ● | VCGT33(0.5)-1N P00P07 | SLCBC130S | 9.525 | 4.4 | 4.76 | 0.2 | 3.0 |
| | VCGT160404-1N P00P07 | | | | | ● | VCGT331-1N P00P07 | | | | | 0.4 | |
| | VCGT160408-1N P00P07 | | | | | ● | VCGT332-1N P00P07 | | | | | 0.8 | |
| | VCGT160402-3N P00P07 | CBCBC130S | ● | ● | ● | | VCGT33(0.5)-3N P00P07 | CBCBC130S | 9.525 | 4.4 | 4.76 | 0.2 | 3.0 |
| | VCGT160404-3N P00P07 | | ● | ● | ● | | VCGT331-3N P00P07 | | | | | 0.4 | |
| | VCGT160408-3N P00P07 | | ● | ● | ● | | VCGT332-3N P00P07 | | | | | 0.8 | |

Examples: ISO: VCGT160402-1N P00P07CBCBC130S PD01E
 ANSI: VCGT33(0.5)-1N P00P07CBCBC130S PD01E

Specifications of PCD/CVDD Wiper Insert

CC

80° PCBN Negative Inserts



| Shape | ISO | Tip Shape | N | | | | ANSI | Tip Shape | Dimensions in mm | | | | |
|-------|----------------------|-----------|-------|-------|-------|------|---------------------------|-----------|------------------|-----|------|-----|-----|
| | | | PD01E | PD10E | PD32E | CVDD | | | ic | Ød | s | r | la |
| | | | | | | | | | | | | | |
| | CCGW060202-1N P00P07 | CBWG25S | ● | ● | ● | | CCGW2(1.5)(0.5)-1N P00P07 | CBWG25S | 6.35 | 2.8 | 2.38 | 0.2 | 2.5 |
| | CCGW060204-1N P00P07 | | ● | ● | ● | | CCGW2(1.5)1-1N P00P07 | | | | | 0.4 | |
| | CCGW060202-1N P00P07 | SLWG25S | | | | ● | CCGW2(1.5)(0.5)-1N P00P07 | SLWG25S | 6.35 | 2.8 | 2.38 | 0.2 | 2.5 |
| | CCGW060204-1N P00P07 | | | | | ● | CCGW2(1.5)1-1N P00P07 | | | | | 0.4 | |
| | CCGW060202-2N P00P07 | CBWG25S | ● | ● | ● | | CCGW2(1.5)(0.5)-2N P00P07 | CBWG25S | 6.35 | 2.8 | 2.38 | 0.2 | 2.5 |
| | CCGW060204-2N P00P07 | | ● | ● | ● | | CCGW2(1.5)1-2N P00P07 | | | | | 0.4 | |

CC

80° PCBN Negative Inserts



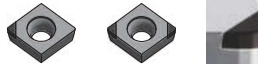
| Shape | ISO | Tip Shape | N | | | | ANSI | Tip Shape | Dimensions in mm | | | | |
|-------|----------------------|-----------|-------|-------|-------|------|---------------------------|-----------|------------------|-----|------|-----|-----|
| | | | PD01E | PD10E | PD32E | CVDD | | | ic | Ød | s | r | la |
| | | | | | | | | | | | | | |
| | CCGW09T302-1N P00P07 | CBWG25S | ● | ● | ● | | CCGW3(2.5)(0.5)-1N P00P07 | CBWG25S | 9.525 | 4.4 | 3.97 | 0.2 | 2.5 |
| | CCGW09T304-1N P00P07 | | ● | ● | ● | | CCGW3(2.5)1-1N P00P07 | | | | | 0.4 | |
| | CCGW09T308-1N P00P07 | | ● | ● | ● | | CCGW3(2.5)2-1N P00P07 | | | | | 0.8 | |
| | CCGW09T302-1N P00P07 | SLWG25S | | | | ● | CCGW3(2.5)(0.5)-1N P00P07 | SLWG25S | 9.525 | 4.4 | 3.97 | 0.2 | 2.5 |
| | CCGW09T304-1N P00P07 | | | | | ● | CCGW3(2.5)1-1N P00P07 | | | | | 0.4 | |
| | CCGW09T308-1N P00P07 | | | | | ● | CCGW3(2.5)2-1N P00P07 | | | | | 0.8 | |
| | CCGW09T302-2N P00P07 | CBWG25S | ● | ● | ● | | CCGW3(2.5)(0.5)-2N P00P07 | CBWG25S | 9.525 | 4.4 | 3.97 | 0.2 | 2.5 |
| | CCGW09T304-2N P00P07 | | ● | ● | ● | | CCGW3(2.5)1-2N P00P07 | | | | | 0.4 | |
| | CCGW09T308-2N P00P07 | | ● | ● | ● | | CCGW3(2.5)2-2N P00P07 | | | | | 0.8 | |

Examples: ISO: CCGW09T302-1N P00P07CBWG25S PD01E
 ANSI: CCGW3(2.5)(0.5)-1N P00P07CBWG25S PD01E

Specifications of PCD/CVDD Wiper Insert

CC

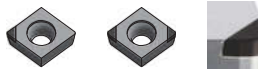
80° PCBN Negative Inserts



| Shape | ISO | Tip Shape | N | | | | ANSI | Tip Shape | Dimensions in mm | | | | |
|-------|----------------------|-----------|-------|-------|-------|------|-----------------------|-----------|------------------|-----|------|-----|-----|
| | | | PD01E | PD10E | PD32E | CVDD | | | ic | Ød | s | r | la |
| | | | | | | | | | | | | | |
| | CCGW120402-1N P00P07 | CBWG25S | ● | ● | ● | | CCGW43(0.5)-1N P00P07 | CBWG25S | 12.7 | 5.5 | 4.76 | 0.2 | 2.5 |
| | CCGW120404-1N P00P07 | | ● | ● | ● | | CCGW431-1N P00P07 | | | | | 0.4 | |
| | CCGW120408-1N P00P07 | | ● | ● | ● | | CCGW432-1N P00P07 | | | | | 0.8 | |
| | CCGW120402-1N P00P07 | SLWG25S | | | | ● | CCGW43(0.5)-1N P00P07 | SLWG25S | 12.7 | 5.5 | 4.76 | 0.2 | 2.5 |
| | CCGW120404-1N P00P07 | | | | | ● | CCGW431-1N P00P07 | | | | | 0.4 | |
| | CCGW120408-1N P00P07 | | | | | ● | CCGW432-1N P00P07 | | | | | 0.8 | |
| | CCGW120402-2N P00P07 | CBWG25S | ● | ● | ● | | CCGW43(0.5)-2N P00P07 | CBWG25S | 12.7 | 5.5 | 4.76 | 0.2 | 2.5 |
| | CCGW120404-2N P00P07 | | ● | ● | ● | | CCGW431-2N P00P07 | | | | | 0.4 | |
| | CCGW120408-2N P00P07 | | ● | ● | ● | | CCGW432-2N P00P07 | | | | | 0.8 | |

CN

80° PCBN Negative Inserts



| Shape | ISO | Tip Shape | N | | | | ANSI | Tip Shape | Dimensions in mm | | | | |
|-------|----------------------|-----------|-------|-------|-------|------|-----------------------|-----------|------------------|------|------|-----|-----|
| | | | PD01E | PD10E | PD32E | CVDD | | | ic | Ød | s | r | la |
| | | | | | | | | | | | | | |
| | CNGA120402-1N P00P00 | CBWG25S | ● | ● | ● | | CNGA43(0.5)-1N P00P00 | CBWG25S | 12.7 | 5.16 | 4.76 | 0.2 | 2.5 |
| | CNGA120404-1N P00P00 | | ● | ● | ● | | CNGA431-1N P00P00 | | | | | 0.4 | |
| | CNGA120408-1N P00P00 | | ● | ● | ● | | CNGA432-1N P00P00 | | | | | 0.8 | |
| | CNGA120402-1N P00P00 | SLWG25S | | | | ● | CNGA43(0.5)-1N P00P00 | SLWG25S | 12.7 | 5.16 | 4.76 | 0.2 | 2.5 |
| | CNGA120404-1N P00P00 | | | | | ● | CNGA431-1N P00P00 | | | | | 0.4 | |
| | CNGA120408-1N P00P00 | | | | | ● | CNGA432-1N P00P00 | | | | | 0.8 | |
| | CNGA120402-2N P00P00 | CBWG25S | ● | ● | ● | | CNGA43(0.5)-2N P00P00 | CBWG25S | 12.7 | 5.16 | 4.76 | 0.2 | 2.5 |
| | CNGA120404-2N P00P00 | | ● | ● | ● | | CNGA431-2N P00P00 | | | | | 0.4 | |
| | CNGA120408-2N P00P00 | | ● | ● | ● | | CNGA432-2N P00P00 | | | | | 0.8 | |

Examples: ISO: CNGA120402-1N P00P00CBWG25S PD01E
ANSI: CNGA43(0.5)-1N P00P00CBWG25S PD01E

Specifications of Standard PCD/CVDD Insert



80° PCBN Negative Inserts



| Shape | ISO | Tip Shape | N | | | | ANSI | Tip Shape | Dimensions in mm | | | | | | | |
|----------------------|----------------------|-----------|---------|-------|-----------------------|------|---------------------------|---------------------------|------------------|---------|------|-----|------|-----|-----|-----|
| | | | PD01E | PD10E | PD32E | CVDD | | | ic | ∅d | s | α | r | la | | |
| | | | | | | | | | | | | 0° | 5° | | 10° | |
| | CCGW060202-1N P00P07 | CBST25S | ● | ● | ● | | CCGW2(1.5)(0.5)-1N P00P07 | CBST25S | 6.35 | 2.8 | 2.38 | 0° | 0.2 | 2.5 | | |
| | CCGT060202-1N P05P07 | | ● | ● | ● | | CCGT2(1.5)(0.5)-1N P05P07 | | | | | 5° | 0.2 | | | |
| | CCGT060202-1N P10P07 | | ● | ● | ● | | CCGT2(1.5)(0.5)-1N P10P07 | | | | | 10° | 0.2 | | | |
| | CCGW060204-1N P00P07 | | ● | ● | ● | | CCGW2(1.5)1-1N P00P07 | | | | | 0° | 0.4 | | | |
| | CCGT060204-1N P05P07 | | ● | ● | ● | | CCGT2(1.5)1-1N P05P07 | | | | | 5° | 0.4 | | | |
| | CCGT060204-1N P10P07 | | ● | ● | ● | | CCGT2(1.5)1-1N P10P07 | | | | | 10° | 0.4 | | | |
| | CCGW060202-1N P00P07 | | SLST25S | | | | ● | CCGW2(1.5)(0.5)-1N P00P07 | | SLST25S | 6.35 | 2.8 | 2.38 | 0° | 0.2 | 2.5 |
| | CCGT060202-1N P05P07 | | | | | ● | CCGT2(1.5)(0.5)-1N P05P07 | 5° | 0.2 | | | | | | | |
| | CCGT060202-1N P10P07 | | | | | ● | CCGT2(1.5)(0.5)-1N P10P07 | 10° | 0.2 | | | | | | | |
| | CCGW060204-1N P00P07 | | | | | ● | CCGW2(1.5)1-1N P00P07 | 0° | 0.4 | | | | | | | |
| CCGT060204-1N P05P07 | | | | ● | CCGT2(1.5)1-1N P05P07 | 5° | 0.4 | | | | | | | | | |
| CCGT060204-1N P10P07 | | | | ● | CCGT2(1.5)1-1N P10P07 | 10° | 0.4 | | | | | | | | | |
| | CCGW060202-2N P00P07 | CBST25S | ● | ● | ● | | CCGW2(1.5)(0.5)-2N P00P07 | CBST25S | 6.35 | 2.8 | 2.38 | 0° | 0.2 | 2.5 | | |
| | CCGT060202-2N P05P07 | | ● | ● | ● | | CCGT2(1.5)(0.5)-2N P05P07 | | | | | 5° | 0.2 | | | |
| | CCGT060202-2N P10P07 | | ● | ● | ● | | CCGT2(1.5)(0.5)-2N P10P07 | | | | | 10° | 0.2 | | | |
| | CCGW060204-2N P00P07 | | ● | ● | ● | | CCGW2(1.5)1-2N P00P07 | | | | | 0° | 0.4 | | | |
| | CCGT060204-2N P05P07 | | ● | ● | ● | | CCGT2(1.5)1-2N P05P07 | | | | | 5° | 0.4 | | | |
| | CCGT060204-2N P10P07 | | ● | ● | ● | | CCGT2(1.5)1-2N P10P07 | | | | | 10° | 0.4 | | | |



80° PCBN Negative Inserts



| Shape | ISO | Tip Shape | N | | | | ANSI | Tip Shape | Dimensions in mm | | | | | | | |
|----------------------|----------------------|-----------|---------|-------|-----------------------|------|---------------------------|---------------------------|------------------|---------|-------|-----|------|-----|-----|-----|
| | | | PD01E | PD10E | PD32E | CVDD | | | ic | ∅d | s | α | r | la | | |
| | | | | | | | | | | | | 0° | 5° | | 10° | |
| | CCGW09T302-1N P00P07 | CBST25S | ● | ● | ● | | CCGW2(1.5)(0.5)-1N P00P07 | CBST25S | 9.525 | 4.4 | 3.97 | 0° | 0.2 | 2.5 | | |
| | CCGT09T302-1N P05P07 | | ● | ● | ● | | CCGT2(1.5)(0.5)-1N P05P07 | | | | | 5° | 0.2 | | | |
| | CCGT09T302-1N P10P07 | | ● | ● | ● | | CCGT2(1.5)(0.5)-1N P10P07 | | | | | 10° | 0.2 | | | |
| | CCGW09T304-1N P00P07 | | ● | ● | ● | | CCGW2(1.5)1-1N P00P07 | | | | | 0° | 0.4 | | | |
| | CCGT09T304-1N P05P07 | | ● | ● | ● | | CCGT2(1.5)1-1N P05P07 | | | | | 5° | 0.4 | | | |
| | CCGT09T304-1N P10P07 | | ● | ● | ● | | CCGT2(1.5)1-1N P10P07 | | | | | 10° | 0.4 | | | |
| | CCGW09T302-1N P00P07 | | SLST25S | | | | ● | CCGW2(1.5)(0.5)-1N P00P07 | | SLST25S | 9.525 | 4.4 | 3.97 | 0° | 0.2 | 2.5 |
| | CCGT09T302-1N P05P07 | | | | | ● | CCGT2(1.5)(0.5)-1N P05P07 | 5° | 0.2 | | | | | | | |
| | CCGT09T302-1N P10P07 | | | | | ● | CCGT2(1.5)(0.5)-1N P10P07 | 10° | 0.2 | | | | | | | |
| | CCGW09T304-1N P00P07 | | | | | ● | CCGW2(1.5)1-1N P00P07 | 0° | 0.4 | | | | | | | |
| CCGT09T304-1N P05P07 | | | | ● | CCGT2(1.5)1-1N P05P07 | 5° | 0.4 | | | | | | | | | |
| CCGT09T304-1N P10P07 | | | | ● | CCGT2(1.5)1-1N P10P07 | 10° | 0.4 | | | | | | | | | |
| | CCGW09T302-2N P00P07 | CBST25S | ● | ● | ● | | CCGW2(1.5)(0.5)-2N P00P07 | CBST25S | 9.525 | 4.4 | 3.97 | 0° | 0.2 | 2.5 | | |
| | CCGT09T302-2N P05P07 | | ● | ● | ● | | CCGT2(1.5)(0.5)-2N P05P07 | | | | | 5° | 0.2 | | | |
| | CCGT09T302-2N P10P07 | | ● | ● | ● | | CCGT2(1.5)(0.5)-2N P10P07 | | | | | 10° | 0.2 | | | |
| | CCGW09T304-2N P00P07 | | ● | ● | ● | | CCGW2(1.5)1-2N P00P07 | | | | | 0° | 0.4 | | | |
| | CCGT09T304-2N P05P07 | | ● | ● | ● | | CCGT2(1.5)1-2N P05P07 | | | | | 5° | 0.4 | | | |
| | CCGT09T304-2N P10P07 | | ● | ● | ● | | CCGT2(1.5)1-2N P10P07 | | | | | 10° | 0.4 | | | |

Examples: ISO: CCGT09T302-1NP00P07CBCBC125S PD01E
 ANSI: CCGT3(2.5)(0.5)-1NP00P07CBCBC125S PD01E

Specifications of Standard PCD/CVDD Insert

CC

80° PCBN Negative Inserts



| Shape | ISO | Tip Shape | N | | | | ANSI | Tip Shape | Dimensions in mm | | | | | |
|-------|----------------------|-----------|-------|-------|-------|------|-----------------------|-----------|------------------|-----|------|-----|-----|-----|
| | | | PD01E | PD10E | PD32E | CVDD | | | ic | Ød | s | α | r | la |
| | | | | | | | | | | | | 0° | 5° | |
| | CCGW09T308-1N P00P07 | CBST25S | ● | ● | ● | | CCGW2(1.5)2-1N P00P07 | CBST25S | 9.525 | 4.4 | 3.97 | 0° | 0.8 | 2.5 |
| | CCGT09T308-1N P05P07 | | ● | ● | ● | | CCGT2(1.5)2-1N P05P07 | | | | | 5° | 0.8 | |
| | CCGT09T308-1N P10P07 | | ● | ● | ● | | CCGT2(1.5)2-1N P10P07 | | | | | 10° | 0.8 | |
| | CCGW09T308-1N P00P07 | SLST25S | | | | ● | CCGW2(1.5)2-1N P00P07 | SLST25S | 9.525 | 4.4 | 3.97 | 0° | 0.8 | 2.5 |
| | CCGT09T308-1N P05P07 | | | | | ● | CCGT2(1.5)2-1N P05P07 | | | | | 5° | 0.8 | |
| | CCGT09T308-1N P10P07 | | | | | ● | CCGT2(1.5)2-1N P10P07 | | | | | 10° | 0.8 | |
| | CCGW09T308-2N P00P07 | CBST25S | ● | ● | ● | | CCGW2(1.5)2-2N P00P07 | CBST25S | 9.525 | 4.4 | 3.97 | 0° | 0.8 | 2.5 |
| | CCGT09T308-2N P05P07 | | ● | ● | ● | | CCGT2(1.5)2-2N P05P07 | | | | | 5° | 0.8 | |
| | CCGT09T308-2N P10P07 | | ● | ● | ● | | CCGT2(1.5)2-2N P10P07 | | | | | 10° | 0.8 | |

CC

80° PCBN Negative Inserts



| Shape | ISO | Tip Shape | N | | | | ANSI | Tip Shape | Dimensions in mm | | | | | |
|-------|----------------------|-----------|-------|-------|-------|------|-----------------------|-----------|------------------|-----|------|-----|-----|-----|
| | | | PD01E | PD10E | PD32E | CVDD | | | ic | Ød | s | α | r | la |
| | | | | | | | | | | | | 0° | 5° | |
| | CCGW120402-1N P00P07 | CBST25S | ● | ● | ● | | CCGW43(0.5)-1N P00P07 | CBST25S | 12.7 | 5.5 | 4.76 | 0° | 0.2 | 2.5 |
| | CCGT120402-1N P05P07 | | ● | ● | ● | | CCGT43(0.5)-1N P05P07 | | | | | 5° | 0.2 | |
| | CCGT120402-1N P10P07 | | ● | ● | ● | | CCGT43(0.5)-1N P10P07 | | | | | 10° | 0.2 | |
| | CCGW120404-1N P00P07 | SLST25S | | | | ● | CCGW431-1N P00P07 | SLST25S | 12.7 | 5.5 | 4.76 | 0° | 0.4 | 2.5 |
| | CCGT120404-1N P05P07 | | | | | ● | CCGT431-1N P05P07 | | | | | 5° | 0.4 | |
| | CCGT120404-1N P10P07 | | | | | ● | CCGT431-1N P10P07 | | | | | 10° | 0.4 | |
| | CCGW120402-2N P00P07 | CBST25S | ● | ● | ● | | CCGW43(0.5)-2N P00P07 | CBST25S | 12.7 | 5.5 | 4.76 | 0° | 0.2 | 2.5 |
| | CCGT120402-2N P05P07 | | ● | ● | ● | | CCGT43(0.5)-2N P05P07 | | | | | 5° | 0.2 | |
| | CCGT120402-2N P10P07 | | ● | ● | ● | | CCGT43(0.5)-2N P10P07 | | | | | 10° | 0.2 | |
| | CCGW120404-2N P00P07 | CBST25S | | | | ● | CCGW431-2N P00P07 | CBST25S | 12.7 | 5.5 | 4.76 | 0° | 0.4 | 2.5 |
| | CCGT120404-2N P05P07 | | | | | ● | CCGT431-2N P05P07 | | | | | 5° | 0.4 | |
| | CCGT120404-2N P10P07 | | | | | ● | CCGT431-2N P10P07 | | | | | 10° | 0.4 | |

Examples: ISO: CCGW120402-1N P00P07CBST25S PD01E
ANSI: CCGW43(0.5)-1N P00P07CBST25S PD01E

Specifications of Standard PCD/CVDD Insert

CC

80° PCBN Negative Inserts



| Shape | ISO | Tip Shape | N | | | | ANSI | Tip Shape | Dimensions in mm | | | | | |
|-------|----------------------|-----------|-------|-------|-------|------|-------------------|-----------|------------------|-----|------|-----|-----|-----|
| | | | PD01E | PD10E | PD32E | CVDD | | | ic | Ød | s | α | r | la |
| | | | | | | | | | | | | 0° | 5° | |
| | CCGW120408-1N P00P07 | CBST25S | ● | ● | ● | | CCGW432-1N P00P07 | CBST25S | 12.7 | 5.5 | 4.76 | 0° | 0.8 | 2.5 |
| | CCGT120408-1N P05P07 | | ● | ● | ● | | CCGT432-1N P05P07 | | | | | 5° | 0.8 | |
| | CCGT120408-1N P10P07 | | ● | ● | ● | | CCGT432-1N P10P07 | | | | | 10° | 0.8 | |
| | CCGW120408-1N P00P07 | SLST25S | | | | ● | CCGW432-1N P00P07 | SLST25S | 12.7 | 5.5 | 4.76 | 0° | 0.8 | 2.5 |
| | CCGT120408-1N P05P07 | | | | | ● | CCGT432-1N P05P07 | | | | | 5° | 0.8 | |
| | CCGT120408-1N P10P07 | | | | | ● | CCGT432-1N P10P07 | | | | | 10° | 0.8 | |
| | CCGW120408-2N P00P07 | CBST25S | ● | ● | ● | | CCGW432-2N P00P07 | CBST25S | 12.7 | 5.5 | 4.76 | 0° | 0.8 | 2.5 |
| | CCGT120408-2N P05P07 | | ● | ● | ● | | CCGT432-2N P05P07 | | | | | 5° | 0.8 | |
| | CCGT120408-2N P10P07 | | ● | ● | ● | | CCGT432-2N P10P07 | | | | | 10° | 0.8 | |

DC

55° PCBN Negative Inserts



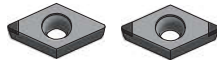
| Shape | ISO | Tip Shape | N | | | | ANSI | Tip Shape | Dimensions in mm | | | | | |
|-------|----------------------|-----------|-------|-------|-------|------|---------------------------|-----------|------------------|-----|------|-----|-----|-----|
| | | | PD01E | PD10E | PD32E | CVDD | | | ic | Ød | s | α | r | la |
| | | | | | | | | | | | | 0° | 5° | |
| | DCGW070202-1N P00P07 | CBST25S | ● | ● | ● | | DCGW2(1.5)(0.5)-1N P00P07 | CBST25S | 6.35 | 2.8 | 2.38 | 0° | 0.2 | 2.5 |
| | DCGT070202-1N P05P07 | | ● | ● | ● | | DCGT2(1.5)(0.5)-1N P05P07 | | | | | 5° | 0.2 | |
| | DCGT070202-1N P10P07 | | ● | ● | ● | | DCGT2(1.5)(0.5)-1N P10P07 | | | | | 10° | 0.2 | |
| | DCGW070204-1N P00P07 | SLST25S | | | | ● | DCGW2(1.5)1-1N P00P07 | SLST25S | 6.35 | 2.8 | 2.38 | 0° | 0.4 | 2.5 |
| | DCGT070204-1N P05P07 | | | | | ● | DCGT2(1.5)1-1N P05P07 | | | | | 5° | 0.4 | |
| | DCGT070204-1N P10P07 | | | | | ● | DCGT2(1.5)1-1N P10P07 | | | | | 10° | 0.4 | |
| | DCGW070202-2N P00P07 | CBST25S | ● | ● | ● | | DCGW2(1.5)(0.5)-2N P00P07 | CBST25S | 6.35 | 2.8 | 2.38 | 0° | 0.2 | 2.5 |
| | DCGT070202-2N P05P07 | | ● | ● | ● | | DCGT2(1.5)(0.5)-2N P05P07 | | | | | 5° | 0.2 | |
| | DCGT070202-2N P10P07 | | ● | ● | ● | | DCGT2(1.5)(0.5)-2N P10P07 | | | | | 10° | 0.2 | |
| | DCGW070204-2N P00P07 | CBST25S | | | | ● | DCGW2(1.5)1-2N P00P07 | CBST25S | 6.35 | 2.8 | 2.38 | 0° | 0.4 | 2.5 |
| | DCGT070204-2N P05P07 | | | | | ● | DCGT2(1.5)1-2N P05P07 | | | | | 5° | 0.4 | |
| | DCGT070204-2N P10P07 | | | | | ● | DCGT2(1.5)1-2N P10P07 | | | | | 10° | 0.4 | |

Examples: ISO: DCGW070202-1N P00P07CBST25S PD01E
 ANSI: DCGW2(1.5)(0.5)-1N P00P07CBST25S PD01E

Specifications of Standard PCD/CVDD Insert

DC

55° PCBN Negative Inserts



| Shape | ISO | Tip Shape | N | | | | ANSI | Tip Shape | Dimensions in mm | | | | | |
|-------|----------------------|-----------|-------|-------|-------|------|-----------------------|-----------|------------------|-----|------|-----|-----|-----|
| | | | PD01E | PD10E | PD32E | CVDD | | | ic | Ød | s | α | r | la |
| | | | | | | | | | | | | 0° | 5° | |
| | DCGW070208-1N P00P07 | CBST25S | ● | ● | ● | | DCGW2(1.5)2-1N P00P07 | CBST25S | 6.35 | 2.8 | 2.38 | 0° | 0.8 | 2.5 |
| | DCGT070208-1N P05P07 | | ● | ● | ● | | DCGT2(1.5)2-1N P05P07 | | | | | 5° | 0.8 | |
| | DCGT070208-1N P10P07 | | ● | ● | ● | | DCGT2(1.5)2-1N P10P07 | | | | | 10° | 0.8 | |
| | DCGW070208-1N P00P07 | SLST25S | | | | ● | DCGW2(1.5)2-1N P00P07 | SLST25S | 6.35 | 2.8 | 2.38 | 0° | 0.8 | 2.5 |
| | DCGT070208-1N P05P07 | | | | | ● | DCGT2(1.5)2-1N P05P07 | | | | | 5° | 0.8 | |
| | DCGT070208-1N P10P07 | | | | | ● | DCGT2(1.5)2-1N P10P07 | | | | | 10° | 0.8 | |
| | DCGW070208-2N P00P07 | CBST25S | ● | ● | ● | | DCGW2(1.5)2-2N P00P07 | CBST25S | 6.35 | 2.8 | 2.38 | 0° | 0.8 | 2.5 |
| | DCGT070208-2N P05P07 | | ● | ● | ● | | DCGT2(1.5)2-2N P05P07 | | | | | 5° | 0.8 | |
| | DCGT070208-2N P10P07 | | ● | ● | ● | | DCGT2(1.5)2-2N P10P07 | | | | | 10° | 0.8 | |

DC

55° PCBN Negative Inserts



| Shape | ISO | Tip Shape | N | | | | ANSI | Tip Shape | Dimensions in mm | | | | | |
|-------|----------------------|-----------|-------|-------|-------|------|---------------------------|-----------|------------------|-----|------|-----|-----|-----|
| | | | PD01E | PD10E | PD32E | CVDD | | | ic | Ød | s | α | r | la |
| | | | | | | | | | | | | 0° | 5° | |
| | DCGW11T302-1N P00P07 | CBST25S | ● | ● | ● | | DCGW3(2.5)(0.5)-1N P00P07 | CBST25S | 9.525 | 4.4 | 3.97 | 0° | 0.2 | 2.5 |
| | DCGT11T302-1N P05P07 | | ● | ● | ● | | DCGT3(2.5)(0.5)-1N P05P07 | | | | | 5° | 0.2 | |
| | DCGT11T302-1N P10P07 | | ● | ● | ● | | DCGT3(2.5)(0.5)-1N P10P07 | | | | | 10° | 0.2 | |
| | DCGW11T304-1N P00P07 | SLST25S | | | | ● | DCGW3(2.5)1-1N P00P07 | SLST25S | 9.525 | 4.4 | 3.97 | 0° | 0.4 | 2.5 |
| | DCGT11T304-1N P05P07 | | | | | ● | DCGT3(2.5)1-1N P05P07 | | | | | 5° | 0.4 | |
| | DCGT11T304-1N P10P07 | | | | | ● | DCGT3(2.5)1-1N P10P07 | | | | | 10° | 0.4 | |
| | DCGW11T302-2N P00P07 | CBST25S | ● | ● | ● | | DCGW3(2.5)(0.5)-2N P00P07 | CBST25S | 9.525 | 4.4 | 3.97 | 0° | 0.2 | 2.5 |
| | DCGT11T302-2N P05P07 | | ● | ● | ● | | DCGT3(2.5)(0.5)-2N P05P07 | | | | | 5° | 0.2 | |
| | DCGT11T302-2N P10P07 | | ● | ● | ● | | DCGT3(2.5)(0.5)-2N P10P07 | | | | | 10° | 0.2 | |
| | DCGW11T304-2N P00P07 | CBST25S | | | | ● | DCGW3(2.5)1-2N P00P07 | CBST25S | 9.525 | 4.4 | 3.97 | 0° | 0.4 | 2.5 |
| | DCGT11T304-2N P05P07 | | | | | ● | DCGT3(2.5)1-2N P05P07 | | | | | 5° | 0.4 | |
| | DCGT11T304-2N P10P07 | | | | | ● | DCGT3(2.5)1-2N P10P07 | | | | | 10° | 0.4 | |

Examples: ISO: DCGW11T302-1N P00P07CBST25S PD01E
 ANSI: DCGW3(2.5)(0.5)-1N P00P07CBST25S PD01E

Specifications of Standard PCD/CVDD Insert

DC

55° PCBN Negative Inserts



| Shape | ISO | Tip Shape | N | | | | ANSI | Tip Shape | Dimensions in mm | | | | | |
|-------|----------------------|-----------|-------|-------|-------|------|-----------------------|-----------|------------------|-----|------|-----|-----|-----|
| | | | PD01E | PD10E | PD32E | CVDD | | | ic | Ød | s | α | r | la |
| | | | | | | | | | | | | 0° | 5° | |
| | DCGW11T308-1N P00P07 | CBST25S | ● | ● | ● | | DCGW3(2.5)2-1N P00P07 | CBST25S | 9.525 | 4.4 | 3.97 | 0° | 0.8 | 2.5 |
| | DCGT11T308-1N P05P07 | | ● | ● | ● | | DCGT3(2.5)2-1N P05P07 | | | | | 5° | 0.8 | |
| | DCGT11T308-1N P10P07 | | ● | ● | ● | | DCGT3(2.5)2-1N P10P07 | | | | | 10° | 0.8 | |
| | DCGW11T308-1N P00P07 | SLST25S | | | | ● | DCGW3(2.5)2-1N P00P07 | SLST25S | 9.525 | 4.4 | 3.97 | 0° | 0.8 | 2.5 |
| | DCGT11T308-1N P05P07 | | | | | ● | DCGT3(2.5)2-1N P05P07 | | | | | 5° | 0.8 | |
| | DCGT11T308-1N P10P07 | | | | | ● | DCGT3(2.5)2-1N P10P07 | | | | | 10° | 0.8 | |
| | DCGW11T308-2N P00P07 | CBST25S | ● | ● | ● | | DCGW3(2.5)2-2N P00P07 | CBST25S | 9.525 | 4.4 | 3.97 | 0° | 0.8 | 2.5 |
| | DCGT11T308-2N P05P07 | | ● | ● | ● | | DCGT3(2.5)2-2N P05P07 | | | | | 5° | 0.8 | |
| | DCGT11T308-2N P10P07 | | ● | ● | ● | | DCGT3(2.5)2-2N P10P07 | | | | | 10° | 0.8 | |

TC

60° PCBN Negative Inserts



| Shape | ISO | Tip Shape | N | | | | ANSI | Tip Shape | Dimensions in mm | | | | | |
|-------|----------------------|-----------|-------|-------|-------|------|-------------------------------|-----------|------------------|-----|------|-----|-----|-----|
| | | | PD01E | PD10E | PD32E | CVDD | | | ic | Ød | s | α | r | la |
| | | | | | | | | | | | | 0° | 5° | |
| | TCGW080202-1N P00P07 | CBST25S | ● | ● | ● | | TCGW(1.5)(1.5)(0.5)-1N P00P07 | CBST25S | 4.76 | 2.4 | 2.38 | 0° | 0.2 | 2.5 |
| | TCGT080202-1N P05P07 | | ● | ● | ● | | TCGT(1.5)(1.5)(0.5)-1N P05P07 | | | | | 5° | 0.2 | |
| | TCGT080202-1N P10P07 | | ● | ● | ● | | TCGT(1.5)(1.5)(0.5)-1N P10P07 | | | | | 10° | 0.2 | |
| | TCGW080204-1N P00P07 | SLST25S | | | | ● | TCGW(1.5)(1.5)1-1N P00P07 | SLST25S | 4.76 | 2.4 | 2.38 | 0° | 0.4 | 2.5 |
| | TCGT080204-1N P05P07 | | | | | ● | TCGT(1.5)(1.5)1-1N P05P07 | | | | | 5° | 0.4 | |
| | TCGT080204-1N P10P07 | | | | | ● | TCGT(1.5)(1.5)1-1N P10P07 | | | | | 10° | 0.4 | |
| | TCGW080202-3N P00P07 | CBST25S | ● | ● | ● | | TCGW(1.5)(1.5)(0.5)-3N P00P07 | CBST25S | 4.76 | 2.4 | 2.38 | 0° | 0.2 | 2.5 |
| | TCGT080202-3N P05P07 | | ● | ● | ● | | TCGT(1.5)(1.5)(0.5)-3N P05P07 | | | | | 5° | 0.2 | |
| | TCGT080202-3N P10P07 | | ● | ● | ● | | TCGT(1.5)(1.5)(0.5)-3N P10P07 | | | | | 10° | 0.2 | |
| | TCGW080204-3N P00P07 | CBST25S | | | | ● | TCGW(1.5)(1.5)1-3N P00P07 | CBST25S | 4.76 | 2.4 | 2.38 | 0° | 0.4 | 2.5 |
| | TCGT080204-3N P05P07 | | | | | ● | TCGT(1.5)(1.5)1-3N P05P07 | | | | | 5° | 0.4 | |
| | TCGT080204-3N P10P07 | | | | | ● | TCGT(1.5)(1.5)1-3N P10P07 | | | | | 10° | 0.4 | |

Examples: ISO: TCGW080202-1N P00P07CBST25S PD01E

ANSI: TCGW(1.5)(1.5)(0.5)-1N P00P07CBST25S PD01E

Specifications of Standard PCD/CVDD Insert

TC 60° PCBN Negative Inserts



| Shape | ISO | Tip Shape | N | | | | ANSI | Tip Shape | Dimensions in mm | | | | | |
|-------|----------------------|-----------|-------|-------|-------|------|---------------------------|-----------|------------------|-----|------|-----|-----|-----|
| | | | PD01E | PD10E | PD32E | CVDD | | | ic | ∅d | s | α | r | la |
| | TCGW080208-1N P00P07 | CBST25S | ● | ● | ● | | TCGW(1.5)(1.5)2-1N P00P07 | CBST25S | 4.76 | 2.4 | 2.38 | 0° | 0.8 | 2.5 |
| | TCGT080208-1N P05P07 | | ● | ● | ● | | TCGT(1.5)(1.5)2-1N P05P07 | | | | | 5° | 0.8 | |
| | TCGT080208-1N P10P07 | | ● | ● | ● | | TCGT(1.5)(1.5)2-1N P10P07 | | | | | 10° | 0.8 | |
| | TCGW080208-1N P00P07 | SLST25S | | | | ● | TCGW(1.5)(1.5)2-1N P00P07 | SLST25S | 4.76 | 2.4 | 2.38 | 0° | 0.8 | |
| | TCGT080208-1N P05P07 | | | | | ● | TCGT(1.5)(1.5)2-1N P05P07 | | | | | 5° | 0.8 | |
| | TCGT080208-1N P10P07 | | | | | ● | TCGT(1.5)(1.5)2-1N P10P07 | | | | | 10° | 0.8 | |
| | TCGW080208-2N P00P07 | CBST25S | ● | ● | ● | | TCGW(1.5)(1.5)2-3N P00P07 | CBST25S | 4.76 | 2.4 | 2.38 | 0° | 0.8 | 2.5 |
| | TCGT080208-2N P05P07 | | ● | ● | ● | | TCGT(1.5)(1.5)2-3N P05P07 | | | | | 5° | 0.8 | |
| | TCGT080208-2N P10P07 | | ● | ● | ● | | TCGT(1.5)(1.5)2-3N P10P07 | | | | | 10° | 0.8 | |

TC 60° PCBN Negative Inserts



| Shape | ISO | Tip Shape | N | | | | ANSI | Tip Shape | Dimensions in mm | | | | | |
|-------|----------------------|-----------|-------|-------|-------|------|-----------------------|-----------|------------------|-----|------|-----|-----|-----|
| | | | PD01E | PD10E | PD32E | CVDD | | | ic | ∅d | s | α | r | la |
| | TCGW110302-1N P00P07 | CBST25S | ● | ● | ● | | TCGW22(0.5)-1N P00P07 | CBST25S | 6.35 | 2.8 | 3.18 | 0° | 0.2 | 2.5 |
| | TCGT110302-1N P05P07 | | ● | ● | ● | | TCGT22(0.5)-1N P05P07 | | | | | 5° | 0.2 | |
| | TCGT110302-1N P10P07 | | ● | ● | ● | | TCGT22(0.5)-1N P10P07 | | | | | 10° | 0.2 | |
| | TCGW110304-1N P00P07 | SLST25S | | | | ● | TCGW22(0.5)-1N P00P07 | SLST25S | 6.35 | 2.8 | 3.18 | 0° | 0.4 | |
| | TCGT110304-1N P05P07 | | | | | ● | TCGT22(0.5)-1N P05P07 | | | | | 5° | 0.4 | |
| | TCGT110304-1N P10P07 | | | | | ● | TCGT22(0.5)-1N P10P07 | | | | | 10° | 0.4 | |
| | TCGW110302-1N P00P07 | CBST25S | | | | ● | TCGW22(0.5)-1N P00P07 | CBST25S | 6.35 | 2.8 | 3.18 | 0° | 0.2 | 2.5 |
| | TCGT110302-1N P05P07 | | | | | ● | TCGT22(0.5)-1N P05P07 | | | | | 5° | 0.2 | |
| | TCGT110302-1N P10P07 | | | | | ● | TCGT22(0.5)-1N P10P07 | | | | | 10° | 0.2 | |
| | TCGW110304-1N P00P07 | CBST25S | | | | ● | TCGW22(0.5)-1N P00P07 | CBST25S | 6.35 | 2.8 | 3.18 | 0° | 0.4 | |
| | TCGT110304-1N P05P07 | | | | | ● | TCGT22(0.5)-1N P05P07 | | | | | 5° | 0.4 | |
| | TCGT110304-1N P10P07 | | | | | ● | TCGT22(0.5)-1N P10P07 | | | | | 10° | 0.4 | |

Examples: ISO: TCGW110302-1N P00P07CBST25S PD01E
 ANSI: TCGW22(0.5)-1N P00P07CBST25S PD01E

Specifications of Standard PCD/CVDD Insert

TC

60° PCBN Negative Inserts



| Shape | ISO | Tip Shape | N | | | | ANSI | Tip Shape | Dimensions in mm | | | | | |
|-------|----------------------|-----------|-------|-------|-------|------|-------------------|-----------|------------------|-----|------|-----|-----|-----|
| | | | PD01E | PD10E | PD32E | CVDD | | | ic | ∅d | s | α | r | la |
| | | | | | | | | | | | | | | |
| | TCGW110308-1N P00P07 | CBST25S | ● | ● | ● | | TCGW222-1N P00P07 | CBST25S | 6.35 | 2.8 | 3.18 | 0° | 0.8 | 2.5 |
| | TCGT110308-1N P05P07 | | ● | ● | ● | | TCGT222-1N P05P07 | | | | | 5° | 0.8 | |
| | TCGT110308-1N P10P07 | | ● | ● | ● | | TCGT222-1N P10P07 | | | | | 10° | 0.8 | |
| | TCGW110308-1N P00P07 | SLST25S | | | | ● | TCGW222-1N P00P07 | SLST25S | 6.35 | 2.8 | 3.18 | 0° | 0.8 | 2.5 |
| | TCGT110308-1N P05P07 | | | | | ● | TCGT222-1N P05P07 | | | | | 5° | 0.8 | |
| | TCGT110308-1N P10P07 | | | | | ● | TCGT222-1N P10P07 | | | | | 10° | 0.8 | |
| | TCGW110308-3N P00P07 | CBST25S | ● | ● | ● | | TCGW222-1N P00P07 | CBST25S | 6.35 | 2.8 | 3.18 | 0° | 0.8 | 2.5 |
| | TCGT110308-3N P05P07 | | ● | ● | ● | | TCGT222-1N P05P07 | | | | | 5° | 0.8 | |
| | TCGT110308-3N P10P07 | | ● | ● | ● | | TCGT222-1N P10P07 | | | | | 10° | 0.8 | |

TC

60° PCBN Negative Inserts



| Shape | ISO | Tip Shape | N | | | | ANSI | Tip Shape | Dimensions in mm | | | | | |
|-------|----------------------|-----------|-------|-------|-------|------|-----------------------|-----------|------------------|-----|------|-----|-----|-----|
| | | | PD01E | PD10E | PD32E | CVDD | | | ic | ∅d | s | α | r | la |
| | | | | | | | | | | | | | | |
| | TCGW160402-1N P00P07 | CBST25S | ● | ● | ● | | TCGW33(0.5)-1N P00P07 | CBST25S | 9.525 | 4.4 | 4.76 | 0° | 0.2 | 2.5 |
| | TCGT160402-1N P05P07 | | ● | ● | ● | | TCGT33(0.5)-1N P05P07 | | | | | 5° | 0.2 | |
| | TCGT160402-1N P10P07 | | ● | ● | ● | | TCGT33(0.5)-1N P10P07 | | | | | 10° | 0.2 | |
| | TCGW160404-1N P00P07 | SLST25S | | | | ● | TCGW33(0.5)-1N P00P07 | SLST25S | 9.525 | 4.4 | 4.76 | 0° | 0.4 | 2.5 |
| | TCGT160404-1N P05P07 | | | | | ● | TCGT33(0.5)-1N P05P07 | | | | | 5° | 0.4 | |
| | TCGT160404-1N P10P07 | | | | | ● | TCGT33(0.5)-1N P10P07 | | | | | 10° | 0.4 | |
| | TCGW160402-3N P00P07 | CBST25S | ● | ● | ● | | TCGW33(0.5)-3N P00P07 | CBST25S | 9.525 | 4.4 | 4.76 | 0° | 0.2 | 2.5 |
| | TCGT160402-3N P05P07 | | ● | ● | ● | | TCGT33(0.5)-3N P05P07 | | | | | 5° | 0.2 | |
| | TCGT160402-3N P10P07 | | ● | ● | ● | | TCGT33(0.5)-3N P10P07 | | | | | 10° | 0.2 | |
| | TCGW160404-3N P00P07 | CBST25S | | | | ● | TCGW33(0.5)-3N P00P07 | CBST25S | 9.525 | 4.4 | 4.76 | 0° | 0.4 | 2.5 |
| | TCGT160404-3N P05P07 | | | | | ● | TCGT33(0.5)-3N P05P07 | | | | | 5° | 0.4 | |
| | TCGT160404-3N P10P07 | | | | | ● | TCGT33(0.5)-3N P10P07 | | | | | 10° | 0.4 | |

Examples: ISO: TCGW160402-1N P00P07CBST25S PD01E
 ANSI: TCGW33(0.5)-1N P00P07CBST25S PD01E

Specifications of Standard PCD/CVDD Insert

TC

60° PCBN Negative Inserts



| Shape | ISO | Tip Shape | N | | | | ANSI | Tip Shape | Dimensions in mm | | | | | |
|-------|----------------------|-----------|-------|-------|-------|------|-------------------|-----------|------------------|-----|------|-----|-----|-----|
| | | | PD01E | PD10E | PD32E | CVDD | | | ic | ∅d | s | α | r | la |
| | TCGW160408-1N P00P07 | CBST25S | ● | ● | ● | | TCGW332-1N P00P07 | CBST25S | 9.525 | 4.4 | 4.76 | 0° | 0.8 | 2.5 |
| | TCGT160408-1N P05P07 | | ● | ● | ● | | TCGT332-1N P05P07 | | | | | 5° | 0.8 | |
| | TCGT160408-1N P10P07 | | ● | ● | ● | | TCGT332-1N P10P07 | | | | | 10° | 0.8 | |
| | TCGW160408-1N P00P07 | SLST25S | | | | ● | TCGW332-1N P00P07 | SLST25S | 9.525 | 4.4 | 4.76 | 0° | 0.8 | 2.5 |
| | TCGT160408-1N P05P07 | | | | | ● | TCGT332-1N P05P07 | | | | | 5° | 0.8 | |
| | TCGT160408-1N P10P07 | | | | | ● | TCGT332-1N P10P07 | | | | | 10° | 0.8 | |
| | TCGW160408-3N P00P07 | CBST25S | ● | ● | ● | | TCGW332-3N P00P07 | CBST25S | 9.525 | 4.4 | 4.76 | 0° | 0.8 | 2.5 |
| | TCGT160408-3N P05P07 | | ● | ● | ● | | TCGT332-3N P05P07 | | | | | 5° | 0.8 | |
| | TCGT160408-3N P10P07 | | ● | ● | ● | | TCGT332-3N P10P07 | | | | | 10° | 0.8 | |

TP

60° PCBN Negative Inserts



| Shape | ISO | Tip Shape | N | | | | ANSI | Tip Shape | Dimensions in mm | | | | | |
|-------|----------------------|-----------|-------|-------|-------|------|-------------------------------|-----------|------------------|-----|------|-----|-----|-----|
| | | | PD01E | PD10E | PD32E | CVDD | | | ic | ∅d | s | α | r | la |
| | TPGW080202-1N P00P11 | CBST25S | ● | ● | ● | | TPGW(1.5)(1.5)(0.5)-1N P00P11 | CBST25S | 4.76 | 2.4 | 2.38 | 0° | 0.2 | 2.5 |
| | TPGT080202-1N P05P11 | | ● | ● | ● | | TPGT(1.5)(1.5)(0.5)-1N P05P11 | | | | | 5° | 0.2 | |
| | TPGT080202-1N P10P11 | | ● | ● | ● | | TPGT(1.5)(1.5)(0.5)-1N P10P11 | | | | | 10° | 0.2 | |
| | TPGW080204-1N P00P11 | SLST25S | | | | ● | TPGW(1.5)(1.5)1-1N P00P11 | SLST25S | 4.76 | 2.4 | 2.38 | 0° | 0.4 | 2.5 |
| | TPGT080204-1N P05P11 | | | | | ● | TPGT(1.5)(1.5)1-1N P05P11 | | | | | 5° | 0.4 | |
| | TPGT080204-1N P10P11 | | | | | ● | TPGT(1.5)(1.5)1-1N P10P11 | | | | | 10° | 0.4 | |
| | TPGW080202-3N P00P11 | CBST25S | ● | ● | ● | | TPGW(1.5)(1.5)(0.5)-3N P00P11 | CBST25S | 4.76 | 2.4 | 2.38 | 0° | 0.2 | 2.5 |
| | TPGT080202-3N P05P11 | | ● | ● | ● | | TPGT(1.5)(1.5)(0.5)-3N P05P11 | | | | | 5° | 0.2 | |
| | TPGT080202-3N P10P11 | | ● | ● | ● | | TPGT(1.5)(1.5)(0.5)-3N P10P11 | | | | | 10° | 0.2 | |
| | TPGW080204-3N P00P11 | CBST25S | | | | ● | TPGW(1.5)(1.5)1-3N P00P11 | CBST25S | 4.76 | 2.4 | 2.38 | 0° | 0.4 | 2.5 |
| | TPGT080204-3N P05P11 | | | | | ● | TPGT(1.5)(1.5)1-3N P05P11 | | | | | 5° | 0.4 | |
| | TPGT080204-3N P10P11 | | | | | ● | TPGT(1.5)(1.5)1-3N P10P11 | | | | | 10° | 0.4 | |

Examples: ISO: TPGW080202-1N P00P11 CBST25S PD01E
 ANSI: TPGW(1.5)(1.5)(0.5)-1N P00P11 CBST25S PD01E

Specifications of Standard PCD/CVDD Insert

TP

60° PCBN Negative Inserts



| Shape | ISO | Tip Shape | N | | | | ANSI | Tip Shape | Dimensions in mm | | | | | |
|-------|----------------------|-----------|-------|-------|-------|------|---------------------------|-----------|------------------|-----|------|-----|-----|-----|
| | | | PD01E | PD10E | PD32E | CVDD | | | ic | ∅d | s | α | r | la |
| | | | | | | | | | | | | 0° | 5° | |
| | TPGW080208-1N P00P11 | CBST25S | ● | ● | ● | | TPGW(1.5)(1.5)2-1N P00P11 | CBST25S | 4.76 | 2.4 | 2.38 | 0° | 0.8 | 2.5 |
| | TPGT080208-1N P05P11 | | ● | ● | ● | | TPGT(1.5)(1.5)2-1N P05P11 | | | | | 5° | 0.8 | |
| | TPGT080208-1N P10P11 | | ● | ● | ● | | TPGT(1.5)(1.5)2-1N P10P11 | | | | | 10° | 0.8 | |
| | TPGW080208-1N P00P11 | SLST25S | | | | ● | TPGW(1.5)(1.5)2-1N P00P11 | SLST25S | 4.76 | 2.4 | 2.38 | 0° | 0.8 | 2.5 |
| | TPGT080208-1N P05P11 | | | | | ● | TPGT(1.5)(1.5)2-1N P05P11 | | | | | 5° | 0.8 | |
| | TPGT080208-1N P10P11 | | | | | ● | TPGT(1.5)(1.5)2-1N P10P11 | | | | | 10° | 0.8 | |
| | TPGW080208-3N P00P11 | CBST25S | ● | ● | ● | | TPGW(1.5)(1.5)2-3N P00P11 | CBST25S | 4.76 | 2.4 | 2.38 | 0° | 0.8 | 2.5 |
| | TPGT080208-3N P05P11 | | ● | ● | ● | | TPGT(1.5)(1.5)2-3N P05P11 | | | | | 5° | 0.8 | |
| | TPGT080208-3N P10P11 | | ● | ● | ● | | TPGT(1.5)(1.5)2-3N P10P11 | | | | | 10° | 0.8 | |

TP

60° PCBN Negative Inserts



| Shape | ISO | Tip Shape | N | | | | ANSI | Tip Shape | Dimensions in mm | | | | | |
|-------|----------------------|-----------|-------|-------|-------|------|-----------------------|-----------|------------------|-----|------|-----|-----|-----|
| | | | PD01E | PD10E | PD32E | CVDD | | | ic | ∅d | s | α | r | la |
| | | | | | | | | | | | | 0° | 5° | |
| | TPGW110302-1N P00P11 | CBST25S | ● | ● | ● | | TPGW22(0.5)-1N P00P11 | CBST25S | 6.35 | 3.3 | 3.18 | 0° | 0.2 | 2.5 |
| | TPGT110302-1N P05P11 | | ● | ● | ● | | TPGT22(0.5)-1N P05P11 | | | | | 5° | 0.2 | |
| | TPGT110302-1N P10P11 | | ● | ● | ● | | TPGT22(0.5)-1N P10P11 | | | | | 10° | 0.2 | |
| | TPGW110304-1N P00P11 | SLST25S | | | | ● | TPGW221-1N P00P11 | SLST25S | 6.35 | 3.3 | 3.18 | 0° | 0.4 | 2.5 |
| | TPGT110304-1N P05P11 | | | | | ● | TPGT221-1N P05P11 | | | | | 5° | 0.4 | |
| | TPGT110304-1N P10P11 | | | | | ● | TPGT221-1N P10P11 | | | | | 10° | 0.4 | |
| | TPGW110302-3N P00P11 | CBST25S | ● | ● | ● | | TPGW22(0.5)-3N P00P11 | CBST25S | 6.35 | 3.3 | 3.18 | 0° | 0.2 | 2.5 |
| | TPGT110302-3N P05P11 | | ● | ● | ● | | TPGT22(0.5)-3N P05P11 | | | | | 5° | 0.2 | |
| | TPGT110302-3N P10P11 | | ● | ● | ● | | TPGT22(0.5)-3N P10P11 | | | | | 10° | 0.2 | |
| | TPGW110304-3N P00P11 | CBST25S | | | | ● | TPGW221-3N P00P11 | CBST25S | 6.35 | 3.3 | 3.18 | 0° | 0.4 | 2.5 |
| | TPGT110304-3N P05P11 | | | | | ● | TPGT221-3N P05P11 | | | | | 5° | 0.4 | |
| | TPGT110304-3N P10P11 | | | | | ● | TPGT221-3N P10P11 | | | | | 10° | 0.4 | |

Examples: ISO: TPGW110302-1N P00P11CBST25S PD01E
ANSI: TPGW22(0.5)-1N P00P11CBST25S PD01E

Specifications of Standard PCD/CVDD Insert

TP

60° PCBN Negative Inserts



| Shape | ISO | Tip Shape | N | | | | ANSI | Tip Shape | Dimensions in mm | | | | | |
|-------|----------------------|-----------|-------|-------|-------|------|-------------------|-----------|------------------|-----|------|-----|-----|-----|
| | | | PD01E | PD10E | PD32E | CVDD | | | ic | ∅d | s | α | r | la |
| | | | | | | | | | | | | | | |
| | TPGW110308-1N P00P11 | CBST25S | ● | ● | ● | | TPGW222-1N P00P11 | CBST25S | 6.35 | 3.3 | 3.18 | 0° | 0.8 | 2.5 |
| | TPGT110308-1N P05P11 | | ● | ● | ● | | TPGT222-1N P05P11 | | | | | 5° | 0.8 | |
| | TPGT110308-1N P10P11 | | ● | ● | ● | | TPGT222-1N P10P11 | | | | | 10° | 0.8 | |
| | TPGW110308-1N P00P11 | | | | | ● | TPGW222-1N P00P11 | | | | | 0° | 0.8 | |
| | TPGT110308-1N P05P11 | | | | | ● | TPGT222-1N P05P11 | | | | | 5° | 0.8 | |
| | TPGT110308-1N P10P11 | | | | | ● | TPGT222-1N P10P11 | | | | | 10° | 0.8 | |
| | TPGW110308-3N P00P11 | CBST25S | ● | ● | ● | | TPGW222-3N P00P11 | CBST25S | 6.35 | 3.3 | 3.18 | 0° | 0.8 | 2.5 |
| | TPGT110308-3N P05P11 | | ● | ● | ● | | TPGT222-3N P05P11 | | | | | 5° | 0.8 | |
| | TPGT110308-3N P10P11 | | ● | ● | ● | | TPGT222-3N P10P11 | | | | | 10° | 0.8 | |
| | TPGW110308-3N P00P11 | | | | | ● | TPGW222-3N P00P11 | | | | | 0° | 0.8 | |
| | TPGT110308-3N P05P11 | | | | | ● | TPGT222-3N P05P11 | | | | | 5° | 0.8 | |
| | TPGT110308-3N P10P11 | | | | | ● | TPGT222-3N P10P11 | | | | | 10° | 0.8 | |

TP

60° PCBN Negative Inserts



| Shape | ISO | Tip Shape | N | | | | ANSI | Tip Shape | Dimensions in mm | | | | | |
|-------|----------------------|-----------|-------|-------|-------|------|-----------------------|-----------|------------------|-----|------|-----|-----|-----|
| | | | PD01E | PD10E | PD32E | CVDD | | | ic | ∅d | s | α | r | la |
| | | | | | | | | | | | | | | |
| | TPGW160302-1N P00P11 | CBST25S | ● | ● | ● | | TPGW32(0.5)-1N P00P11 | CBST25S | 9.525 | 4.4 | 3.18 | 0° | 0.2 | 2.5 |
| | TPGT160302-1N P05P11 | | ● | ● | ● | | TPGT32(0.5)-1N P05P11 | | | | | 5° | 0.2 | |
| | TPGT160302-1N P10P11 | | ● | ● | ● | | TPGT32(0.5)-1N P10P11 | | | | | 10° | 0.2 | |
| | TPGW160304-1N P00P11 | | | | | ● | TPGW321-1N P00P11 | | | | | 0° | 0.4 | |
| | TPGT160304-1N P05P11 | | | | | ● | TPGT321-1N P05P11 | | | | | 5° | 0.4 | |
| | TPGT160304-1N P10P11 | | | | | ● | TPGT321-1N P10P11 | | | | | 10° | 0.4 | |
| | TPGW160302-1N P00P11 | SLST25S | | | | ● | TPGW32(0.5)-1N P00P11 | SLST25S | 9.525 | 4.4 | 3.18 | 0° | 0.2 | 2.5 |
| | TPGT160302-1N P05P11 | | | | | ● | TPGT32(0.5)-1N P05P11 | | | | | 5° | 0.2 | |
| | TPGT160302-1N P10P11 | | | | | ● | TPGT32(0.5)-1N P10P11 | | | | | 10° | 0.2 | |
| | TPGW160304-1N P00P11 | | | | | ● | TPGW321-1N P00P11 | | | | | 0° | 0.4 | |
| | TPGT160304-1N P05P11 | | | | | ● | TPGT321-1N P05P11 | | | | | 5° | 0.4 | |
| | TPGT160304-1N P10P11 | | | | | ● | TPGT321-1N P10P11 | | | | | 10° | 0.4 | |
| | TPGW160302-3N P00P11 | CBST25S | ● | ● | ● | | TPGW32(0.5)-3N P00P11 | CBST25S | 9.525 | 4.4 | 3.18 | 0° | 0.2 | 2.5 |
| | TPGT160302-3N P05P11 | | ● | ● | ● | | TPGT32(0.5)-3N P05P11 | | | | | 5° | 0.2 | |
| | TPGT160302-3N P10P11 | | ● | ● | ● | | TPGT32(0.5)-3N P10P11 | | | | | 10° | 0.2 | |
| | TPGW160304-3N P00P11 | | | | | ● | TPGW321-3N P00P11 | | | | | 0° | 0.4 | |
| | TPGT160304-3N P05P11 | | | | | ● | TPGT321-3N P05P11 | | | | | 5° | 0.4 | |
| | TPGT160304-3N P10P11 | | | | | ● | TPGT321-3N P10P11 | | | | | 10° | 0.4 | |

Examples: ISO: TPGW160302-1N P00P11CBST25S PD01E
ANSI: TPGW32(0.5)-1N P00P11CBST25S PD01E

Specifications of Standard PCD/CVDD Insert

TP

60° PCBN Negative Inserts



| Shape | ISO | Tip Shape | N | | | | ANSI | Tip Shape | Dimensions in mm | | | | | |
|-------|----------------------|-----------|-------|-------|-------|------|-------------------|-----------|------------------|-----|------|-----|-----|-----|
| | | | PD01E | PD10E | PD32E | CVDD | | | ic | Ød | s | α | r | la |
| | | | | | | | | | | | | 0° | 5° | |
| | TPGW160308-1N P00P11 | CBST25S | ● | ● | ● | | TPGW322-1N P00P11 | CBST25S | 9.525 | 4.4 | 3.18 | 0° | 0.8 | 2.5 |
| | TPGT160308-1N P05P11 | | ● | ● | ● | | TPGT322-1N P05P11 | | | | | 5° | 0.8 | |
| | TPGT160308-1N P10P11 | | ● | ● | ● | | TPGT322-1N P10P11 | | | | | 10° | 0.8 | |
| | TPGW160308-1N P00P11 | | | | | ● | TPGW322-1N P00P11 | | | | | 0° | 0.8 | |
| | TPGT160308-1N P05P11 | | | | | ● | TPGT322-1N P05P11 | | | | | 5° | 0.8 | |
| | TPGT160308-1N P10P11 | | | | | ● | TPGT322-1N P10P11 | | | | | 10° | 0.8 | |
| | TPGW160308-3N P00P11 | CBST25S | ● | ● | ● | | TPGW322-3N P00P11 | CBST25S | 9.525 | 4.4 | 3.18 | 0° | 0.8 | 2.5 |
| | TPGT160308-3N P05P11 | | ● | ● | ● | | TPGT322-3N P05P11 | | | | | 5° | 0.8 | |
| | TPGT160308-3N P10P11 | | ● | ● | ● | | TPGT322-3N P10P11 | | | | | 10° | 0.8 | |

TP

60° PCBN Negative Inserts



| Shape | ISO | Tip Shape | N | | | | ANSI | Tip Shape | Dimensions in mm | | | | | |
|-------|----------------------|-----------|-------|-------|-------|------|-----------------------|-----------|------------------|-----|------|-----|-----|-----|
| | | | PD01E | PD10E | PD32E | CVDD | | | ic | Ød | s | α | r | la |
| | | | | | | | | | | | | 0° | 5° | |
| | TPGW160402-1N P00P11 | CBST25S | ● | ● | ● | | TPGW33(0.5)-1N P00P11 | CBST25S | 9.525 | 4.4 | 4.76 | 0° | 0.2 | 2.5 |
| | TPGT160402-1N P05P11 | | ● | ● | ● | | TPGT33(0.5)-1N P05P11 | | | | | 5° | 0.2 | |
| | TPGT160402-1N P10P11 | | ● | ● | ● | | TPGT33(0.5)-1N P10P11 | | | | | 10° | 0.2 | |
| | TPGW160404-1N P00P11 | | | | | ● | TPGW331-1N P00P11 | | | | | 0° | 0.4 | |
| | TPGT160404-1N P05P11 | | | | | ● | TPGT331-1N P05P11 | | | | | 5° | 0.4 | |
| | TPGT160404-1N P10P11 | | | | | ● | TPGT331-1N P10P11 | | | | | 10° | 0.4 | |
| | TPGW160402-1N P00P11 | SLST25S | | | | ● | TPGW33(0.5)-1N P00P11 | SLST25S | 9.525 | 4.4 | 4.76 | 0° | 0.2 | 2.5 |
| | TPGT160402-1N P05P11 | | | | | ● | TPGT33(0.5)-1N P05P11 | | | | | 5° | 0.2 | |
| | TPGT160402-1N P10P11 | | | | | ● | TPGT33(0.5)-1N P10P11 | | | | | 10° | 0.2 | |
| | TPGW160404-1N P00P11 | | | | | ● | TPGW331-1N P00P11 | | | | | 0° | 0.4 | |
| | TPGT160404-1N P05P11 | | | | | ● | TPGT331-1N P05P11 | | | | | 5° | 0.4 | |
| | TPGT160404-1N P10P11 | | | | | ● | TPGT331-1N P10P11 | | | | | 10° | 0.4 | |
| | TPGW160402-3N P00P11 | CBST25S | ● | ● | ● | | TPGW33(0.5)-3N P00P11 | CBST25S | 9.525 | 4.4 | 4.76 | 0° | 0.2 | 2.5 |
| | TPGT160402-3N P05P11 | | ● | ● | ● | | TPGT33(0.5)-3N P05P11 | | | | | 5° | 0.2 | |
| | TPGT160402-3N P10P11 | | ● | ● | ● | | TPGT33(0.5)-3N P10P11 | | | | | 10° | 0.2 | |
| | TPGW160404-3N P00P11 | | | | | ● | TPGW331-3N P00P11 | | | | | 0° | 0.4 | |
| | TPGT160404-3N P05P11 | | | | | ● | TPGT331-3N P05P11 | | | | | 5° | 0.4 | |
| | TPGT160404-3N P10P11 | | | | | ● | TPGT331-3N P10P11 | | | | | 10° | 0.4 | |

Examples: ISO: TPGW160402-1N P00P11CBST25S PD01E
ANSI: TPGW33(0.5)-1N P00P11CBST25S PD01E

Specifications of Standard PCD/CVDD Insert

TP

60° PCBN Negative Inserts



| Shape | ISO | Tip Shape | N | | | | ANSI | Tip Shape | Dimensions in mm | | | | | |
|-------|----------------------|-----------|-------|-------|-------|------|-------------------|-----------|------------------|-----|------|-----|-----|-----|
| | | | PD01E | PD10E | PD32E | CVDD | | | ic | Ød | s | α | r | la |
| | | | | | | | | | | | | | | |
| | TPGW160408-1N P00P11 | CBST25S | ● | ● | ● | | TPGW332-1N P00P11 | CBST25S | 9.525 | 4.4 | 4.76 | 0° | 0.8 | 2.5 |
| | TPGT160408-1N P05P11 | | ● | ● | ● | | TPGT332-1N P05P11 | | | | | 5° | 0.8 | |
| | TPGT160408-1N P10P11 | | ● | ● | ● | | TPGT332-1N P10P11 | | | | | 10° | 0.8 | |
| | TPGW160408-1N P00P11 | SLST25S | | | | ● | TPGW332-1N P00P11 | SLST25S | 9.525 | 4.4 | 4.76 | 0° | 0.8 | 2.5 |
| | TPGT160408-1N P05P11 | | | | | ● | TPGT332-1N P05P11 | | | | | 5° | 0.8 | |
| | TPGT160408-1N P10P11 | | | | | ● | TPGT332-1N P10P11 | | | | | 10° | 0.8 | |
| | TPGW160408-3N P00P11 | CBST25S | ● | ● | ● | | TPGW332-3N P00P11 | CBST25S | 9.525 | 4.4 | 4.76 | 0° | 0.8 | 2.5 |
| | TPGT160408-3N P05P11 | | ● | ● | ● | | TPGT332-3N P05P11 | | | | | 5° | 0.8 | |
| | TPGT160408-3N P10P11 | | ● | ● | ● | | TPGT332-3N P10P11 | | | | | 10° | 0.8 | |

VB

35° PCBN Negative Inserts



| Shape | ISO | Tip Shape | N | | | | ANSI | Tip Shape | Dimensions in mm | | | | | |
|-------|----------------------|-----------|-------|-------|-------|------|-----------------------|-----------|------------------|-----|------|-----|-----|-----|
| | | | PD01E | PD10E | PD32E | CVDD | | | ic | Ød | s | α | r | la |
| | | | | | | | | | | | | | | |
| | VBGW110302-1N P00P05 | CBST30S | ● | ● | ● | | VBGW22(0,5)-1N P00P05 | CBST30S | 6.35 | 2.8 | 3.18 | 0° | 0.2 | 3.0 |
| | VBGT110302-1N P05P05 | | ● | ● | ● | | VBGT22(0,5)-1N P05P05 | | | | | 5° | 0.2 | |
| | VBGT110302-1N P10P05 | | ● | ● | ● | | VBGT22(0,5)-1N P10P05 | | | | | 10° | 0.2 | |
| | VBGW110304-1N P00P05 | SLST30S | | | | ● | VBGW221-1N P00P05 | SLST30S | 6.35 | 2.8 | 3.18 | 0° | 0.4 | 3.0 |
| | VBGT110304-1N P05P05 | | | | | ● | VBGT221-1N P05P05 | | | | | 5° | 0.4 | |
| | VBGT110304-1N P10P05 | | | | | ● | VBGT221-1N P10P05 | | | | | 10° | 0.4 | |
| | VBGW110302-2N P00P05 | CBST30S | ● | ● | ● | | VBGW22(0,5)-3N P00P05 | CBST30S | 6.35 | 2.8 | 3.18 | 0° | 0.2 | 3.0 |
| | VBGT110302-2N P05P05 | | ● | ● | ● | | VBGT22(0,5)-3N P05P05 | | | | | 5° | 0.2 | |
| | VBGT110302-2N P10P05 | | ● | ● | ● | | VBGT22(0,5)-3N P10P05 | | | | | 10° | 0.2 | |
| | VBGW110304-2N P00P05 | CBST30S | | | | ● | VBGW221-3N P00P05 | CBST30S | 6.35 | 2.8 | 3.18 | 0° | 0.4 | 3.0 |
| | VBGT110304-2N P05P05 | | | | | ● | VBGT221-3N P05P05 | | | | | 5° | 0.4 | |
| | VBGT110304-2N P10P05 | | | | | ● | VBGT221-3N P10P05 | | | | | 10° | 0.4 | |

Examples: ISO: VBGW110302-1N P00P05CBST30S PD01E
ANSI: VBGW22(0,5)-1N P00P05CBST30S PD01E

Specifications of Standard PCD/CVDD Insert

VB

35° PCBN Negative Inserts



| Shape | ISO | Tip Shape | N | | | | ANSI | Tip Shape | Dimensions in mm | | | | | | |
|-------|----------------------|-----------|-------|-------|-------|------|-------------------|-----------|------------------|-----|------|-----|-----|-----|--|
| | | | PD01E | PD10E | PD32E | CVDD | | | ic | Ød | s | α | r | la | |
| | | | | | | | | | | | | | | | |
| | VBGW110308-1N P00P05 | CBST30S | ● | ● | ● | | VBGW222-1N P00P05 | CBST30S | 6.35 | 2.8 | 3.18 | 0° | 0.8 | 3.0 | |
| | VBGT110308-1N P05P05 | | ● | ● | ● | | VBGT222-1N P05P05 | | | | | 5° | 0.8 | | |
| | VBGT110308-1N P10P05 | | ● | ● | ● | | VBGT222-1N P10P05 | | | | | 10° | 0.8 | | |
| | | | | | | | | | | | | | | | |
| | | | | | | | | | | | | | | | |
| | | | | | | | | | | | | | | | |
| | VBGW110308-1N P00P05 | SLST30S | | | | ● | VBGW222-1N P00P05 | SLST30S | 6.35 | 2.8 | 3.18 | 0° | 0.8 | 3.0 | |
| | VBGT110308-1N P05P05 | | | | | ● | VBGT222-1N P05P05 | | | | | 5° | 0.8 | | |
| | VBGT110308-1N P10P05 | | | | | ● | VBGT222-1N P10P05 | | | | | 10° | 0.8 | | |
| | | | | | | | | | | | | | | | |
| | | | | | | | | | | | | | | | |
| | | | | | | | | | | | | | | | |
| | VBGW110308-2N P00P05 | CBST30S | ● | ● | ● | | VBGW222-3N P00P05 | CBST30S | 6.35 | 2.8 | 3.18 | 0° | 0.8 | 3.0 | |
| | VBGT110308-2N P05P05 | | ● | ● | ● | | VBGT222-3N P05P05 | | | | | 5° | 0.8 | | |
| | VBGT110308-2N P10P05 | | ● | ● | ● | | VBGT222-3N P10P05 | | | | | 10° | 0.8 | | |
| | | | | | | | | | | | | | | | |
| | | | | | | | | | | | | | | | |
| | | | | | | | | | | | | | | | |

VB

35° PCBN Negative Inserts



| Shape | ISO | Tip Shape | N | | | | ANSI | Tip Shape | Dimensions in mm | | | | | |
|-------|----------------------|-----------|-------|-------|-------|------|-----------------------|-----------|------------------|-----|------|-----|-----|-----|
| | | | PD01E | PD10E | PD32E | CVDD | | | ic | Ød | s | α | r | la |
| | | | | | | | | | | | | | | |
| | VBGW160402-1N P00P05 | CBST30S | ● | ● | ● | | VBGW33(0.5)-1N P00P05 | CBST30S | 9.525 | 4.4 | 4.76 | 0° | 0.2 | 3.0 |
| | VBGT160402-1N P05P05 | | ● | ● | ● | | VBGT33(0.5)-1N P05P05 | | | | | 5° | 0.2 | |
| | VBGT160402-1N P10P05 | | ● | ● | ● | | VBGT33(0.5)-1N P10P05 | | | | | 10° | 0.2 | |
| | VBGW160404-1N P00P05 | | ● | ● | ● | | VBGW331-1N P00P05 | | | | | 0° | 0.4 | |
| | VBGT160404-1N P05P05 | | ● | ● | ● | | VBGT331-1N P05P05 | | | | | 5° | 0.4 | |
| | VBGT160404-1N P10P05 | | ● | ● | ● | | VBGT331-1N P10P05 | | | | | 10° | 0.4 | |
| | VBGW160402-1N P00P05 | SLST30S | | | | ● | VBGW33(0.5)-1N P00P05 | SLST30S | 9.525 | 4.4 | 4.76 | 0° | 0.2 | 3.0 |
| | VBGT160402-1N P05P05 | | | | | ● | VBGT33(0.5)-1N P05P05 | | | | | 5° | 0.2 | |
| | VBGT160402-1N P10P05 | | | | | ● | VBGT33(0.5)-1N P10P05 | | | | | 10° | 0.2 | |
| | VBGW160404-1N P00P05 | | | | | ● | VBGW331-1N P00P05 | | | | | 0° | 0.4 | |
| | VBGT160404-1N P05P05 | | | | | ● | VBGT331-1N P05P05 | | | | | 5° | 0.4 | |
| | VBGT160404-1N P10P05 | | | | | ● | VBGT331-1N P10P05 | | | | | 10° | 0.4 | |
| | VBGW160402-2N P00P05 | CBST30S | ● | ● | ● | | VBGW33(0.5)-2N P00P05 | CBST30S | 9.525 | 4.4 | 4.76 | 0° | 0.2 | 3.0 |
| | VBGT160402-2N P05P05 | | ● | ● | ● | | VBGT33(0.5)-2N P05P05 | | | | | 5° | 0.2 | |
| | VBGT160402-2N P10P05 | | ● | ● | ● | | VBGT33(0.5)-2N P10P05 | | | | | 10° | 0.2 | |
| | VBGW160404-2N P00P05 | | ● | ● | ● | | VBGW331-2N P00P05 | | | | | 0° | 0.4 | |
| | VBGT160404-2N P05P05 | | ● | ● | ● | | VBGT331-2N P05P05 | | | | | 5° | 0.4 | |
| | VBGT160404-2N P10P05 | | ● | ● | ● | | VBGT331-2N P10P05 | | | | | 10° | 0.4 | |

Examples: ISO: VBGW160402-1N P00P05CBST30S PD01E
 ANSI: VBGW33(0.5)-1N P00P05CBST30S PD01E

Specifications of Standard PCD/CVDD Insert

VB

35° PCBN Negative Inserts



| Shape | ISO | Tip Shape | N | | | | ANSI | Tip Shape | Dimensions in mm | | | | | | |
|-------|----------------------|-----------|-------|-------|-------|------|-------------------|-----------|------------------|-----|------|-----|-----|-----|--|
| | | | PD01E | PD10E | PD32E | CVDD | | | ic | Ød | s | α | r | la | |
| | | | | | | | | | | | | | | | |
| | VBGW160408-1N P00P05 | CBST30S | ● | ● | ● | | VBGW332-1N P00P05 | CBST30S | 9.525 | 4.4 | 4.76 | 0° | 0.8 | 3.0 | |
| | VBGT160408-1N P05P05 | | ● | ● | ● | | VBGT332-1N P05P05 | | | | | 5° | 0.8 | | |
| | VBGT160408-1N P10P05 | | ● | ● | ● | | VBGT332-1N P10P05 | | | | | 10° | 0.8 | | |
| | | | | | | | | | | | | | | | |
| | | | | | | | | | | | | | | | |
| | | | | | | | | | | | | | | | |
| | VBGW160408-1N P00P05 | SLST30S | | | | ● | VBGW332-1N P00P05 | SLST30S | 9.525 | 4.4 | 4.76 | 0° | 0.8 | 3.0 | |
| | VBGT160408-1N P05P05 | | | | | ● | VBGT332-1N P05P05 | | | | | 5° | 0.8 | | |
| | VBGT160408-1N P10P05 | | | | | ● | VBGT332-1N P10P05 | | | | | 10° | 0.8 | | |
| | | | | | | | | | | | | | | | |
| | | | | | | | | | | | | | | | |
| | | | | | | | | | | | | | | | |
| | VBGW160408-2N P00P05 | CBST30S | ● | ● | ● | | VBGW332-2N P00P05 | CBST30S | 9.525 | 4.4 | 4.76 | 0° | 0.8 | 3.0 | |
| | VBGT160408-2N P05P05 | | ● | ● | ● | | VBGT332-2N P05P05 | | | | | 5° | 0.8 | | |
| | VBGT160408-2N P10P05 | | ● | ● | ● | | VBGT332-2N P10P05 | | | | | 10° | 0.8 | | |
| | | | | | | | | | | | | | | | |
| | | | | | | | | | | | | | | | |
| | | | | | | | | | | | | | | | |

VC

35° PCBN Negative Inserts



| Shape | ISO | Tip Shape | N | | | | ANSI | Tip Shape | Dimensions in mm | | | | | |
|-------|----------------------|-----------|-------|-------|-------|------|-----------------------|-----------|------------------|-----|------|-----|-----|-----|
| | | | PD01E | PD10E | PD32E | CVDD | | | ic | Ød | s | α | r | la |
| | | | | | | | | | | | | | | |
| | VCGW110302-1N P00P07 | CBST30S | ● | ● | ● | | VCGW22(0.5)-1N P00P07 | CBST30S | 6.35 | 2.8 | 3.18 | 0° | 0.2 | 3.0 |
| | VCGT110302-1N P05P07 | | ● | ● | ● | | VCGT22(0.5)-1N P05P07 | | | | | 5° | 0.2 | |
| | VCGT110302-1N P10P07 | | ● | ● | ● | | VCGT22(0.5)-1N P10P07 | | | | | 10° | 0.2 | |
| | VCGW110304-1N P00P07 | | ● | ● | ● | | VCGW221-1N P00P07 | | | | | 0° | 0.4 | |
| | VCGT110304-1N P05P07 | | ● | ● | ● | | VCGT221-1N P05P07 | | | | | 5° | 0.4 | |
| | VCGT110304-1N P10P07 | | ● | ● | ● | | VCGT221-1N P10P07 | | | | | 10° | 0.4 | |
| | VCGW110302-1N P00P07 | SLST30S | | | | ● | VCGW22(0.5)-1N P00P07 | SLST30S | 6.35 | 2.8 | 3.18 | 0° | 0.2 | 3.0 |
| | VCGT110302-1N P05P07 | | | | | ● | VCGT22(0.5)-1N P05P07 | | | | | 5° | 0.2 | |
| | VCGT110302-1N P10P07 | | | | | ● | VCGT22(0.5)-1N P10P07 | | | | | 10° | 0.2 | |
| | VCGW110304-1N P00P07 | | | | | ● | VCGW221-1N P00P07 | | | | | 0° | 0.4 | |
| | VCGT110304-1N P05P07 | | | | | ● | VCGT221-1N P05P07 | | | | | 5° | 0.4 | |
| | VCGT110304-1N P10P07 | | | | | ● | VCGT221-1N P10P07 | | | | | 10° | 0.4 | |
| | VCGW110302-2N P00P07 | CBST30S | ● | ● | ● | | VCGW22(0.5)-2N P00P07 | CBST30S | 6.35 | 2.8 | 3.18 | 0° | 0.2 | 3.0 |
| | VCGT110302-2N P05P07 | | ● | ● | ● | | VCGT22(0.5)-2N P05P07 | | | | | 5° | 0.2 | |
| | VCGT110302-2N P10P07 | | ● | ● | ● | | VCGT22(0.5)-2N P10P07 | | | | | 10° | 0.2 | |
| | VCGW110304-2N P00P07 | | ● | ● | ● | | VCGW221-2N P00P07 | | | | | 0° | 0.4 | |
| | VCGT110304-2N P05P07 | | ● | ● | ● | | VCGT221-2N P05P07 | | | | | 5° | 0.4 | |
| | VCGT110304-2N P10P07 | | ● | ● | ● | | VCGT221-2N P10P07 | | | | | 10° | 0.4 | |

Examples: ISO: VCGW110302-1N P00P07CBST30S PD01E
 ANSI: VCGW22(0.5)-1N P00P07CBST30S PD01E

Specifications of Standard PCD/CVDD Insert

VC

35° PCBN Negative Inserts



| Shape | ISO | Tip Shape | N | | | | ANSI | Tip Shape | Dimensions in mm | | | | | | |
|-------|----------------------|-----------|-------|-------|-------|------|-------------------|-----------|------------------|-----|------|-----|-----|-----|--|
| | | | PD01E | PD10E | PD32E | CVDD | | | ic | ∅d | s | α | r | la | |
| | | | | | | | | | | | | | | | |
| | VCGW110308-1N P00P07 | CBST30S | ● | ● | ● | | VCGW222-1N P00P07 | CBST30S | 6.35 | 2.8 | 3.18 | 0° | 0.8 | 3.0 | |
| | VCGT110308-1N P05P07 | | ● | ● | ● | | VCGT222-1N P05P07 | | | | | 5° | 0.8 | | |
| | VCGT110308-1N P10P07 | | ● | ● | ● | | VCGT222-1N P10P07 | | | | | 10° | 0.8 | | |
| | | | | | | | | | | | | | | | |
| | | | | | | | | | | | | | | | |
| | | | | | | | | | | | | | | | |
| | VCGW110308-1N P00P07 | SLST30S | | | | ● | VCGW222-1N P00P07 | SLST30S | 6.35 | 2.8 | 3.18 | 0° | 0.8 | 3.0 | |
| | VCGT110308-1N P05P07 | | | | | ● | VCGT222-1N P05P07 | | | | | 5° | 0.8 | | |
| | VCGT110308-1N P10P07 | | | | | ● | VCGT222-1N P10P07 | | | | | 10° | 0.8 | | |
| | | | | | | | | | | | | | | | |
| | | | | | | | | | | | | | | | |
| | | | | | | | | | | | | | | | |
| | VCGW110308-2N P00P07 | CBST30S | ● | ● | ● | | VCGW222-2N P00P07 | CBST30S | 6.35 | 2.8 | 3.18 | 0° | 0.8 | 3.0 | |
| | VCGT110308-2N P05P07 | | ● | ● | ● | | VCGT222-2N P05P07 | | | | | 5° | 0.8 | | |
| | VCGT110308-2N P10P07 | | ● | ● | ● | | VCGT222-2N P10P07 | | | | | 10° | 0.8 | | |
| | | | | | | | | | | | | | | | |
| | | | | | | | | | | | | | | | |
| | | | | | | | | | | | | | | | |

VC

35° PCBN Negative Inserts



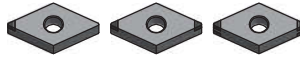
| Shape | ISO | Tip Shape | N | | | | ANSI | Tip Shape | Dimensions in mm | | | | | |
|-------|----------------------|-----------|-------|-------|-------|------|-----------------------|-----------|------------------|-----|------|-----|-----|-----|
| | | | PD01E | PD10E | PD32E | CVDD | | | ic | ∅d | s | α | r | la |
| | | | | | | | | | | | | | | |
| | VCGW160402-1N P00P07 | CBST30S | ● | ● | ● | | VCGW33(0.5)-1N P00P07 | CBST30S | 9.525 | 4.4 | 4.76 | 0° | 0.2 | 3.0 |
| | VCGT160402-1N P05P07 | | ● | ● | ● | | VCGT33(0.5)-1N P05P07 | | | | | 5° | 0.2 | |
| | VCGT160402-1N P10P07 | | ● | ● | ● | | VCGT33(0.5)-1N P10P07 | | | | | 10° | 0.2 | |
| | VCGW160404-1N P00P07 | | ● | ● | ● | | VCGW331-1N P00P07 | | | | | 0° | 0.4 | |
| | VCGT160404-1N P05P07 | | ● | ● | ● | | VCGT331-1N P05P07 | | | | | 5° | 0.4 | |
| | VCGT160404-1N P10P07 | | ● | ● | ● | | VCGT331-1N P10P07 | | | | | 10° | 0.4 | |
| | VCGW160402-1N P00P07 | SLST30S | | | | ● | VCGW33(0.5)-1N P00P07 | SLST30S | 9.525 | 4.4 | 4.76 | 0° | 0.2 | 3.0 |
| | VCGT160402-1N P05P07 | | | | | ● | VCGT33(0.5)-1N P05P07 | | | | | 5° | 0.2 | |
| | VCGT160402-1N P10P07 | | | | | ● | VCGT33(0.5)-1N P10P07 | | | | | 10° | 0.2 | |
| | VCGW160404-1N P00P07 | | | | | ● | VCGW331-1N P00P07 | | | | | 0° | 0.4 | |
| | VCGT160404-1N P05P07 | | | | | ● | VCGT331-1N P05P07 | | | | | 5° | 0.4 | |
| | VCGT160404-1N P10P07 | | | | | ● | VCGT331-1N P10P07 | | | | | 10° | 0.4 | |
| | VCGW160402-2N P00P07 | CBST30S | ● | ● | ● | | VCGW33(0.5)-2N P00P07 | CBST30S | 9.525 | 4.4 | 4.76 | 0° | 0.2 | 3.0 |
| | VCGT160402-2N P05P07 | | ● | ● | ● | | VCGT33(0.5)-2N P05P07 | | | | | 5° | 0.2 | |
| | VCGT160402-2N P10P07 | | ● | ● | ● | | VCGT33(0.5)-2N P10P07 | | | | | 10° | 0.2 | |
| | VCGW160404-2N P00P07 | | ● | ● | ● | | VCGW331-2N P00P07 | | | | | 0° | 0.4 | |
| | VCGT160404-2N P05P07 | | ● | ● | ● | | VCGT331-2N P05P07 | | | | | 5° | 0.4 | |
| | VCGT160404-2N P10P07 | | ● | ● | ● | | VCGT331-2N P10P07 | | | | | 10° | 0.4 | |

Examples: ISO: VCGW160402-1N P00P07CBST30S PD01E
 ANSI: VCGW33(0.5)-1N P00P07CBST30S PD01E

Specifications of Standard PCD/CVDD Insert

DN

55° PCBN Negative Inserts



| Shape | ISO | Tip Shape | N | | | | ANSI | Tip Shape | Dimensions in mm | | | | | | |
|----------------------|----------------------|-----------|---------|-------|-------------------|------|-----------------------|-----------------------|------------------|------|------|------|-----|-----|-----|
| | | | PD01E | PD10E | PD32E | CVDD | | | ic | Ød | s | α | r | la | |
| | | | | | | | | | | | | 0° | 10° | | |
| | DNGA150402-1N P00P00 | CBST25S | ● | ● | ● | | DNGA43(0.5)-1N P00P00 | CBST25S | 12.7 | 5.16 | 4.76 | 0° | 0.2 | 2.5 | |
| | DNGM150402-1N P10P00 | | ● | ● | ● | | DNGM43(0.5)-1N P10P00 | | | | | 10° | 0.2 | | |
| | DNGA150404-1N P00P00 | | ● | ● | ● | | DNGA431-1N P00P00 | | | | | 0° | 0.4 | | |
| | DNGM150404-1N P10P00 | | ● | ● | ● | | DNGM431-1N P10P00 | | | | | 10° | 0.4 | | |
| | DNGA150408-1N P00P00 | | ● | ● | ● | | DNGA432-1N P00P00 | | | | | 0° | 0.8 | | |
| | DNGM150408-1N P10P00 | | ● | ● | ● | | DNGM432-1N P10P00 | | | | | 10° | 0.8 | | |
| | DNGA150402-1N P00P00 | | SLST25S | | | ● | | DNGA43(0.5)-1N P00P00 | SLST25S | 12.7 | 5.16 | 4.76 | 0° | 0.2 | 2.5 |
| | DNGM150402-1N P10P00 | | | | ● | | DNGM43(0.5)-1N P10P00 | 10° | | | | | 0.2 | | |
| | DNGA150404-1N P00P00 | | | | ● | | DNGA431-1N P00P00 | 0° | | | | | 0.4 | | |
| | DNGM150404-1N P10P00 | | | | ● | | DNGM431-1N P10P00 | 10° | | | | | 0.4 | | |
| DNGA150408-1N P00P00 | | | ● | | DNGA432-1N P00P00 | 0° | 0.8 | | | | | | | | |
| DNGM150408-1N P10P00 | | | ● | | DNGM432-1N P10P00 | 10° | 0.8 | | | | | | | | |
| | DNGA150402-2N P00P00 | CBST25S | ● | ● | ● | | DNGA43(0.5)-2N P00P00 | CBST25S | 12.7 | 5.16 | 4.76 | 0° | 0.2 | 2.5 | |
| | DNGM150402-2N P10P00 | | ● | ● | ● | | DNGM43(0.5)-2N P10P00 | | | | | 10° | 0.2 | | |
| | DNGA150404-2N P00P00 | | ● | ● | ● | | DNGA431-2N P00P00 | | | | | 0° | 0.4 | | |
| | DNGM150404-2N P10P00 | | ● | ● | ● | | DNGM431-2N P10P00 | | | | | 10° | 0.4 | | |
| | DNGA150408-2N P00P00 | | ● | ● | ● | | DNGA432-2N P00P00 | | | | | 0° | 0.8 | | |
| | DNGM150408-2N P10P00 | | ● | ● | ● | | DNGM432-2N P10P00 | | | | | 10° | 0.8 | | |

TN

60° PCBN Negative Inserts



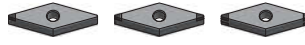
| Shape | ISO | Tip Shape | N | | | | ANSI | Tip Shape | Dimensions in mm | | | | | | |
|----------------------|----------------------|-----------|---------|-------|-------------------|------|-----------------------|-----------------------|------------------|-------|------|------|-----|-----|-----|
| | | | PD01E | PD10E | PD32E | CVDD | | | ic | Ød | s | α | r | la | |
| | | | | | | | | | | | | 0° | 10° | | |
| | TNGA160402-1N P00P00 | CBST25S | ● | ● | ● | | TNGA33(0.5)-1N P00P00 | CBST25S | 9.525 | 3.81 | 4.76 | 0° | 0.2 | 2.5 | |
| | TNGM160402-1N P10P00 | | ● | ● | ● | | TNGM33(0.5)-1N P10P00 | | | | | 10° | 0.2 | | |
| | TNGA160404-1N P00P00 | | ● | ● | ● | | TNGA331-1N P00P00 | | | | | 0° | 0.4 | | |
| | TNGM160404-1N P10P00 | | ● | ● | ● | | TNGM331-1N P10P00 | | | | | 10° | 0.4 | | |
| | TNGA160408-1N P00P00 | | ● | ● | ● | | TNGA332-1N P00P00 | | | | | 0° | 0.8 | | |
| | TNGM160408-1N P10P00 | | ● | ● | ● | | TNGM332-1N P10P00 | | | | | 10° | 0.8 | | |
| | TNGA160402-1N P00P00 | | SLST25S | | | ● | | TNGA33(0.5)-1N P00P00 | SLST25S | 9.525 | 3.81 | 4.76 | 0° | 0.2 | 2.5 |
| | TNGM160402-1N P10P00 | | | | ● | | TNGM33(0.5)-1N P10P00 | 10° | | | | | 0.2 | | |
| | TNGA160404-1N P00P00 | | | | ● | | TNGA331-1N P00P00 | 0° | | | | | 0.4 | | |
| | TNGM160404-1N P10P00 | | | | ● | | TNGM331-1N P10P00 | 10° | | | | | 0.4 | | |
| TNGA160408-1N P00P00 | | | ● | | TNGA332-1N P00P00 | 0° | 0.8 | | | | | | | | |
| TNGM160408-1N P10P00 | | | ● | | TNGM332-1N P10P00 | 10° | 0.8 | | | | | | | | |
| | TNGA160402-3N P00P00 | CBST25S | ● | ● | ● | | TNGA33(0.5)-3N P00P00 | CBST25S | 9.525 | 3.81 | 4.76 | 0° | 0.2 | 2.5 | |
| | TNGM160402-3N P10P00 | | ● | ● | ● | | TNGM33(0.5)-3N P10P00 | | | | | 10° | 0.2 | | |
| | TNGA160404-3N P00P00 | | ● | ● | ● | | TNGA331-3N P00P00 | | | | | 0° | 0.4 | | |
| | TNGM160404-3N P10P00 | | ● | ● | ● | | TNGM331-3N P10P00 | | | | | 10° | 0.4 | | |
| | TNGA160408-3N P00P00 | | ● | ● | ● | | TNGA332-3N P00P00 | | | | | 0° | 0.8 | | |
| | TNGM160408-3N P10P00 | | ● | ● | ● | | TNGM332-3N P10P00 | | | | | 10° | 0.8 | | |

Examples: ISO: TNGA160402-1N P00P00CBST25S PD01E
ANSI: TNGA33(0.5)-1N P00P00CBST25S PD01E

Specifications of Standard PCD/CVDD Insert

VN

35° PCBN Negative Inserts

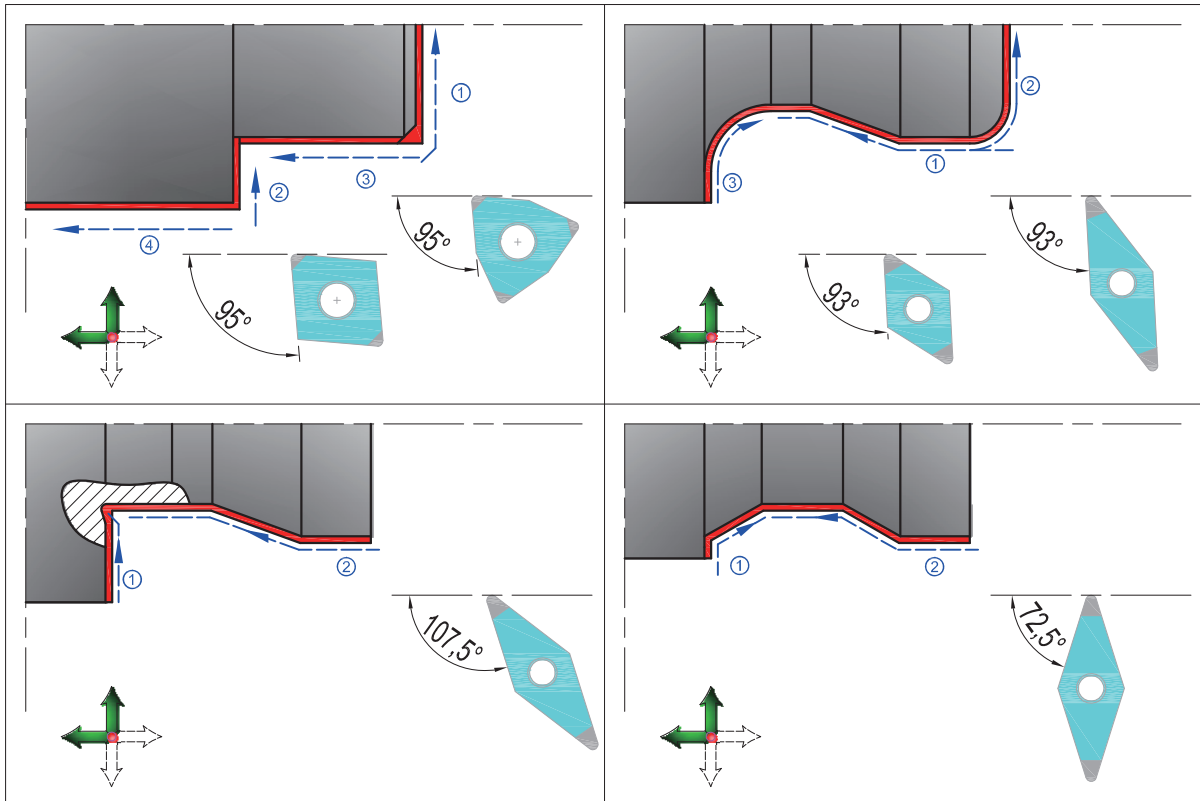


| Shape | ISO | Tip Shape | N | | | | ANSI | Tip Shape | Dimensions in mm | | | | | | | |
|----------------------|----------------------|-----------|---------|-------|-------------------|-------------------|-----------------------|-----------------------|------------------|---------|-------|------|------|-----|-----|-----|
| | | | PD01E | PD10E | PD32E | CVDD | | | ic | Ød | s | α | r | la | | |
| | | | | | | | | | | | | | | | | |
| | VNGA160402-1N P00P00 | CBST30S | ● | ● | ● | | VNGA33(0.5)-1N P00P00 | CBST30S | 9.525 | 3.81 | 4.76 | 0° | 0.2 | 3.0 | | |
| | VNGM160402-1N P10P00 | | ● | ● | ● | | VNGM33(0.5)-1N P10P00 | | | | | 10° | 0.2 | | | |
| | VNGA160404-1N P00P00 | | ● | ● | ● | | VNGA331-1N P00P00 | | | | | 0° | 0.4 | | | |
| | VNGM160404-1N P10P00 | | ● | ● | ● | | VNGM33431-1N P10P00 | | | | | 10° | 0.4 | | | |
| | VNGA160408-1N P00P00 | | ● | ● | ● | | VNGA332-1N P00P00 | | | | | 0° | 0.8 | | | |
| | VNGM160408-1N P10P00 | | ● | ● | ● | | VNGM332-1N P10P00 | | | | | 10° | 0.8 | | | |
| | VNGA160402-1N P00P00 | | SLST30S | | | | ● | VNGA33(0.5)-1N P00P00 | | SLST30S | 9.525 | 3.81 | 4.76 | 0° | 0.2 | 3.0 |
| | VNGM160402-1N P10P00 | | | | | ● | VNGM33(0.5)-1N P10P00 | 10° | 0.2 | | | | | | | |
| | VNGA160404-1N P00P00 | | | | | ● | VNGA331-1N P00P00 | 0° | 0.4 | | | | | | | |
| | VNGM160404-1N P10P00 | | | | | ● | VNGM331-1N P10P00 | 10° | 0.4 | | | | | | | |
| VNGA160408-1N P00P00 | | | | | ● | VNGA332-1N P00P00 | 0° | 0.8 | | | | | | | | |
| VNGM160408-1N P10P00 | | | | ● | VNGM332-1N P10P00 | 10° | 0.8 | | | | | | | | | |
| | VNGA160402-2N P00P00 | CBST30S | ● | ● | ● | | VNGA33(0.5)-2N P00P00 | CBST30S | 9.525 | 3.81 | 4.76 | 0° | 0.2 | 3.0 | | |
| | VNGM160402-2N P10P00 | | ● | ● | ● | | VNGM33(0.5)-2N P10P00 | | | | | 10° | 0.2 | | | |
| | VNGA160404-2N P00P00 | | ● | ● | ● | | VNGA331-2N P00P00 | | | | | 0° | 0.4 | | | |
| | VNGM160404-2N P10P00 | | ● | ● | ● | | VNGM331-2N P10P00 | | | | | 10° | 0.4 | | | |
| | VNGA160408-2N P00P00 | | ● | ● | ● | | VNGA332-2N P00P00 | | | | | 0° | 0.8 | | | |
| | VNGM160408-2N P10P00 | | ● | ● | ● | | VNGM332-2N P10P00 | | | | | 10° | 0.8 | | | |

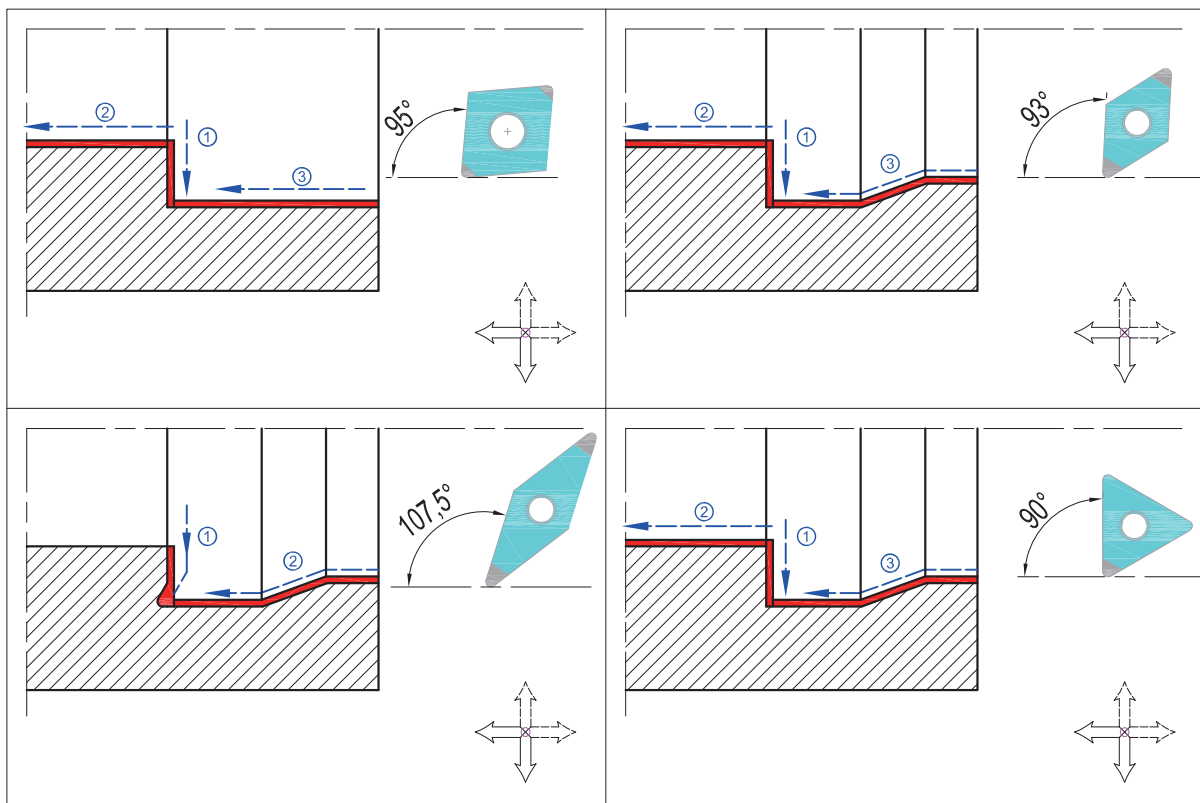
Examples: ISO: VNGA160402-1N P00P00CBST30S PD01E
 ANSI: VNGA33(0.5)-1N P00P00CBST30S PD01E

Cutting Direction Recommendation

External machining



Internal machining



Nose radius, Feed Rate Against Surface Finish Spindle Speed Recommendation

■ Influence of nose radius and feed rate on the surface finish.

The table below gives recommended maximum feed rates to achieve a special Ra. Value.

$$h = r\epsilon - (r\epsilon^2 - (0.5 \times f)^2) 0.5$$

$$f_{\max} = (Ra \times r\epsilon / 50) \frac{1}{2}$$

| Nose radius (mm) | Surface finish Ra value(μm) | | | | | |
|---------------------|-----------------------------|-------|-------|-------|-------|-------|
| | 0.2 | 0.4 | 0.8 | 1.6 | 3.2 | 6.4 |
| | feed (mm/rev) rate ≦ | | | | | |
| 0.2 | 0.028 | 0.040 | 0.057 | 0.080 | 0.113 | 0.160 |
| 0.4 | 0.040 | 0.057 | 0.080 | 0.113 | 0.160 | 0.226 |
| 0.8 | 0.057 | 0.080 | 0.113 | 0.160 | 0.226 | 0.320 |
| 1.2 | 0.069 | 0.098 | 0.139 | 0.196 | 0.277 | 0.392 |
| 1.6 | 0.080 | 0.113 | 0.160 | 0.226 | 0.320 | 0.453 |
| 2.4 | 0.098 | 0.139 | 0.196 | 0.277 | 0.392 | 0.554 |

■ Spindle speed recommendation

| Speed (m/min) | Workpiece/Tool Holer Diameter (mm) | | | | | | | | | | | | | |
|---------------|------------------------------------|------|------|------|------|------|------|------|------|------|------|------|------|------|
| | 12 | 16 | 20 | 25 | 32 | 50 | 63 | 80 | 100 | 125 | 160 | 175 | 200 | 250 |
| 80 | 2123 | 1592 | 1274 | 1019 | 796 | 510 | 404 | 318 | 255 | 204 | 159 | 146 | 127 | 102 |
| 90 | 2389 | 1791 | 1433 | 1146 | 896 | 573 | 455 | 358 | 287 | 229 | 179 | 164 | 143 | 115 |
| 100 | 2654 | 1990 | 1592 | 1274 | 995 | 637 | 506 | 398 | 318 | 255 | 199 | 182 | 159 | 127 |
| 110 | 2919 | 2189 | 1752 | 1401 | 1095 | 701 | 556 | 438 | 350 | 280 | 219 | 200 | 175 | 140 |
| 120 | 3185 | 2389 | 1911 | 1529 | 1194 | 764 | 607 | 478 | 382 | 306 | 239 | 218 | 191 | 153 |
| 140 | 3715 | 2787 | 2229 | 1783 | 1393 | 892 | 708 | 557 | 446 | 357 | 279 | 255 | 223 | 178 |
| 160 | 4246 | 3185 | 2548 | 2038 | 1592 | 1019 | 809 | 637 | 510 | 408 | 318 | 291 | 255 | 204 |
| 180 | 4777 | 3583 | 2866 | 2293 | 1791 | 1146 | 910 | 717 | 573 | 459 | 358 | 328 | 287 | 229 |
| 200 | 5308 | 3981 | 3185 | 2548 | 1990 | 1274 | 1011 | 796 | 637 | 510 | 398 | 364 | 318 | 255 |
| 220 | 5839 | 4379 | 3503 | 2803 | 2189 | 1401 | 1112 | 876 | 701 | 561 | 438 | 400 | 350 | 280 |
| 240 | 6369 | 4777 | 3822 | 3057 | 2389 | 1529 | 1213 | 955 | 764 | 611 | 478 | 437 | 382 | 306 |
| 260 | 6900 | 5175 | 4140 | 3312 | 2588 | 1656 | 1314 | 1035 | 828 | 662 | 518 | 473 | 414 | 331 |
| 280 | 7431 | 5573 | 4459 | 3567 | 2787 | 1783 | 1415 | 1115 | 892 | 713 | 557 | 510 | 446 | 357 |
| 300 | | 5971 | 4777 | 3822 | 2986 | 1911 | 1517 | 1194 | 955 | 764 | 597 | 546 | 478 | 382 |
| 400 | | | | | | 2548 | 2022 | 1592 | 1274 | 1019 | 796 | 728 | 637 | 510 |
| 600 | | | | | | 3822 | 3033 | 2389 | 1911 | 1529 | 1194 | 1092 | 955 | 764 |
| 800 | | | | | | 5096 | 4044 | 3185 | 2548 | 2038 | 1592 | 1456 | 1274 | 1019 |
| 1000 | | | | | | 6369 | 5055 | 3981 | 3185 | 2548 | 1990 | 1820 | 1592 | 1274 |



WORLDIA

COMPETE FOR THE TOP CREATE GLOBAL BRAND



www.worldiatools.com
www.cuttingtoolchina.com

Tel : +86-10-58411388 **Fax :** +86-10-58411388-8030
Add : No.2 Industry Road ,Dachang Chaobaihe Industrial Park,
Langfang City,Hebei Province 065300,China
E-mail : marketing@worldiatools.com

